

Datasheet for ABIN7269320

anti-PIK3R2 antibody

5 Images

[Go to Product page](#)

Overview

Quantity:	100 µL
Target:	PIK3R2 (PI3K p85b)
Reactivity:	Human
Host:	Rabbit
Clonality:	Polyclonal
Conjugate:	This PIK3R2 antibody is un-conjugated
Application:	Western Blotting (WB), Immunohistochemistry (IHC), Immunofluorescence (IF)

Product Details

Purpose:	PI3 Kinase p85 beta Rabbit pAb
Immunogen:	Recombinant protein of human PI3 Kinase p85 beta
Isotype:	IgG
Cross-Reactivity:	Human, Mouse, Rat
Characteristics:	Polyclonal Antibodies
Purification:	Affinity purification

Target Details

Target:	PIK3R2 (PI3K p85b)
Alternative Name:	PIK3R2 (PI3K p85b Products)
Background:	Phosphatidylinositol 3-kinase (PI3K) is a lipid kinase that phosphorylates phosphatidylinositol

Target Details

and similar compounds, creating second messengers important in growth signaling pathways. PI3K functions as a heterodimer of a regulatory and a catalytic subunit. The protein encoded by this gene is a regulatory component of PI3K. Two transcript variants, one protein coding and the other non-protein coding, have been found for this gene.,MPPH,MPPH1,P85B,p85,p85-BETA,PIK3R2,Epigenetics & Nuclear Signaling,Translation Control,Regulation of eIF4 and p70 S6 Kinase,Signal Transduction,Kinase,PI3K-Akt Signaling Pathway,mTOR Signaling Pathway,Protein Kinase C Signaling Pathway,ErbB-HER Signaling Pathway,MAPK-Erk Signaling Pathway,MAPK-JNK Signaling Pathway,Cell Biology & Developmental Biology,Apoptosis,Mitochondrial Control of Apoptosis,Inhibition of Apoptosis,Cytoskeleton,Actins,TGF-b-Smad Signaling Pathway,ESC Pluripotency and Differentiation,Endocrine & Metabolism,Insulin Receptor Signaling Pathway,Warburg Effect,Immunology & Inflammation,B Cell Receptor Signaling Pathway,T Cell Receptor Signaling Pathway,IL-6 Receptor Signaling Pathway,NF-kB Signaling Pathway,Toll-like Receptor Signaling Pathway,Cell Intrinsic Innate Immunity Signaling Pathway,TLR Signaling,PI3Ks and related,PIK3R2

Molecular Weight: 81kDa

Gene ID: 5296

UniProt: [O00459](#)

Pathways: [VEGF Signaling](#), [BCR Signaling](#)

Application Details

Application Notes: WB,1:500 - 1:2000,IHC,1:50 - 1:200,IF,1:50 - 1:200

Restrictions: For Research Use only

Handling

Format: Liquid

Buffer: PBS with 0.02 % sodium azide,50 % glycerol, pH 7.3.

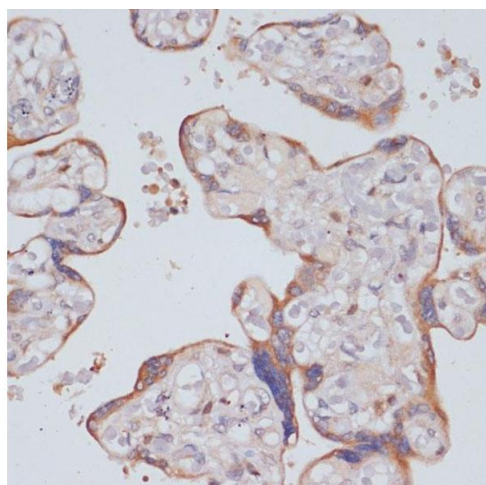
Preservative: Sodium azide

Precaution of Use: This product contains Sodium azide: a POISONOUS AND HAZARDOUS SUBSTANCE which should be handled by trained staff only.

Storage: -20 °C

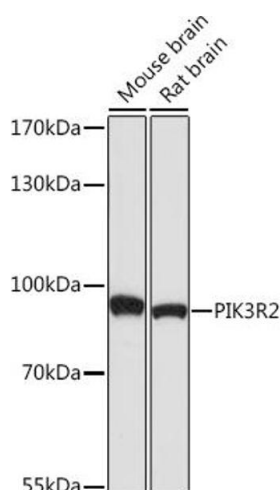
Storage Comment: Store at -20°C. Avoid freeze / thaw cycles.

Images



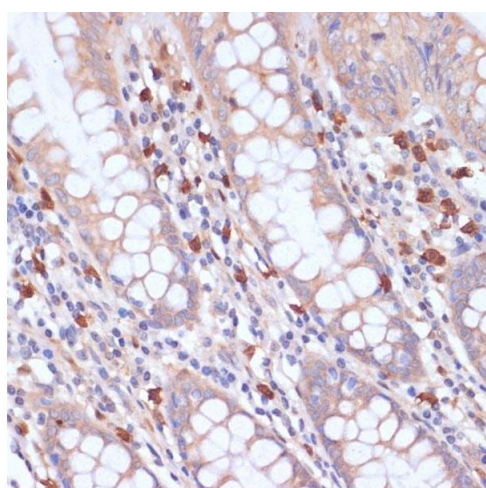
Immunohistochemistry

Image 1. Immunohistochemistry of paraffin-embedded human placenta using PI3 Kinase p85 beta antibody (ABIN7269320) at dilution of 1:200 (40x lens). Perform microwave antigen retrieval with 10 mM PBS buffer pH 7.2 before commencing with IHC staining protocol.



Western Blotting

Image 2. Western blot analysis of extracts of various cell lines, using PI3 Kinase p85 beta antibody (ABIN7269320) at 1:1000 dilution. Secondary antibody: HRP Goat Anti-Rabbit IgG (H+L) (ABIN1684268 and ABIN3020597) at 1:10000 dilution. Lysates/proteins: 25 µg per lane. Blocking buffer: 3 % nonfat dry milk in TBST. Detection: ECL Basic Kit (RM00020). Exposure time: 90s.



Immunohistochemistry

Image 3. Immunohistochemistry of paraffin-embedded human colon using PI3 Kinase p85 beta antibody (ABIN7269320) at dilution of 1:200 (40x lens). Perform microwave antigen retrieval with 10 mM PBS buffer pH 7.2 before commencing with IHC staining protocol.

Please check the [product details page](#) for more images. Overall 5 images are available for ABIN7269320.