



[Go to Product page](#)

Datasheet for ABIN7269330

anti-Phospholamban antibody (pSer16, pThr17)

1 Image

Overview

Quantity:	100 µL
Target:	Phospholamban (PLN)
Binding Specificity:	pSer16, pThr17
Reactivity:	Human
Host:	Rabbit
Clonality:	Polyclonal
Conjugate:	This Phospholamban antibody is un-conjugated
Application:	Western Blotting (WB)

Product Details

Purpose:	Phospho-PLN-S16/T17 Rabbit pAb
Immunogen:	A synthetic phosphorylated peptide around of human Phospho-PLN-S16/T17.
Isotype:	IgG
Cross-Reactivity:	Human, Mouse, Rat
Characteristics:	Phosphorylated Antibodies
Purification:	Affinity purification

Target Details

Target:	Phospholamban (PLN)
Alternative Name:	PLN (PLN Products)

Target Details

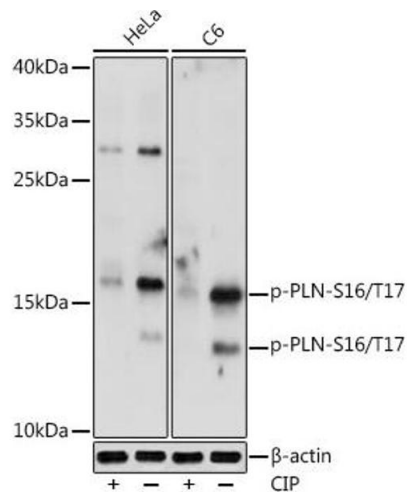
Background:	The protein encoded by this gene is found as a pentamer and is a major substrate for the cAMP-dependent protein kinase in cardiac muscle. The encoded protein is an inhibitor of cardiac muscle sarcoplasmic reticulum Ca(2+)-ATPase in the unphosphorylated state, but inhibition is relieved upon phosphorylation of the protein. The subsequent activation of the Ca(2+) pump leads to enhanced muscle relaxation rates, thereby contributing to the inotropic response elicited in heart by beta-agonists. The encoded protein is a key regulator of cardiac diastolic function. Mutations in this gene are a cause of inherited human dilated cardiomyopathy with refractory congestive heart failure, and also familial hypertrophic cardiomyopathy.,CMD1P,CMH18,PLB,PLN,Cancer,Signal Transduction,Endocrine & Metabolism,Neuroscience,Calcium Signaling,Cardiovascular,Heart,Contractility,PLN
Molecular Weight:	6kDa
Gene ID:	5350
UniProt:	P26678
Pathways:	Negative Regulation of Transporter Activity

Application Details

Application Notes:	WB,1:500 - 1:2000
Restrictions:	For Research Use only

Handling

Format:	Liquid
Buffer:	PBS with 0.02 % sodium azide,50 % glycerol, pH 7.3.
Preservative:	Sodium azide
Precaution of Use:	This product contains Sodium azide: a POISONOUS AND HAZARDOUS SUBSTANCE which should be handled by trained staff only.
Storage:	-20 °C
Storage Comment:	Store at -20°C. Avoid freeze / thaw cycles.



Western Blotting

Image 1. Western blot analysis of extracts of various cell lines, using Phospho-PLN-S16/T17 antibody (ABIN7269330) at 1:1000 dilution. HeLa cells and C6 cells were treated by CIP (20uL/400 μL) at 37 °C for 1 hour. Secondary antibody: HRP Goat Anti-Rabbit IgG (H+L) (ABIN1684268 and ABIN3020597) at 1:10000 dilution. Lysates/proteins: 25 μg per lane. Blocking buffer: 3% nonfat dry milk in TBST. Detection: ECL Basic Kit (RM00020). Exposure time: 10s.