

Datasheet for ABIN7269334

anti-PLA2G2A antibody[Go to Product page](#)**1** Image

Overview

Quantity:	100 µL
Target:	PLA2G2A
Reactivity:	Human
Host:	Rabbit
Clonality:	Monoclonal
Conjugate:	This PLA2G2A antibody is un-conjugated
Application:	Western Blotting (WB)

Product Details

Purpose:	PLA2G2A Rabbit mAb
Immunogen:	Recombinant protein of human PLA2G2A.
Isotype:	IgG
Cross-Reactivity:	Human, Mouse, Rat
Characteristics:	Monoclonal Antibodies
Purification:	Affinity purification

Target Details

Target:	PLA2G2A
Alternative Name:	PLA2G2A (PLA2G2A Products)
Background:	The protein encoded by this gene is a member of the phospholipase A2 family (PLA2). PLA2s

Target Details

constitute a diverse family of enzymes with respect to sequence, function, localization, and divalent cation requirements. This gene product belongs to group II, which contains secreted form of PLA2, an extracellular enzyme that has a low molecular mass and requires calcium ions for catalysis. It catalyzes the hydrolysis of the sn-2 fatty acid acyl ester bond of phosphoglycerides, releasing free fatty acids and lysophospholipids, and thought to participate in the regulation of the phospholipid metabolism in biomembranes. Several alternatively spliced transcript variants with different 5' UTRs have been found for this gene.,PLA2G2A, MOM1, PLA2, PLA2B, PLA2L, PLA2S, PLAS1, sPLA2, phospholipase A2 group IIA,Cancer,Signal Transduction,Cell Biology & Developmental Biology,Cell Cycle,Centrosome,Endocrine & Metabolism,Lipid Metabolism,Hydrolysis,Lipases,Cardiovascular,Lipids,PLA2G2A

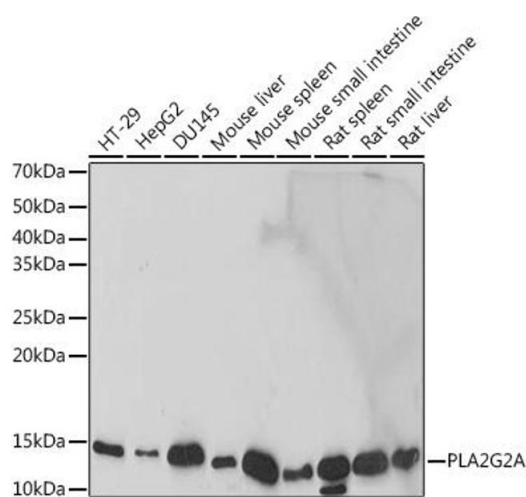
Molecular Weight:	14kDa
Gene ID:	5320
UniProt:	P14555
Pathways:	Stem Cell Maintenance , Inositol Metabolic Process

Application Details

Application Notes:	WB,1:500 - 1:2000
Restrictions:	For Research Use only

Handling

Format:	Liquid
Buffer:	PBS with 0.02 % sodium azide,0.05 % BSA,50 % glycerol, pH 7.3.
Preservative:	Sodium azide
Precaution of Use:	This product contains Sodium azide: a POISONOUS AND HAZARDOUS SUBSTANCE which should be handled by trained staff only.
Storage:	-20 °C
Storage Comment:	Store at -20°C. Avoid freeze / thaw cycles.



Western Blotting

Image 1. Western blot analysis of extracts of various cell lines, using PLA2G2A antibody (ABIN7269334) at 1:1000 dilution. Secondary antibody: HRP Goat Anti-Rabbit IgG (H+L) (ABIN1684268 and ABIN3020597) at 1:10000 dilution. Lysates/proteins: 25 µg per lane. Blocking buffer: 3 % nonfat dry milk in TBST. Detection: ECL Basic Kit (RM00020). Exposure time: 5s.