

Datasheet for ABIN7269341

anti-Phospholipase C gamma 2 antibody (pTyr759)[Go to Product page](#)**2** Images

Overview

Quantity:	100 µL
Target:	Phospholipase C gamma 2 (PLCG2)
Binding Specificity:	pTyr759
Reactivity:	Human
Host:	Rabbit
Clonality:	Polyclonal
Conjugate:	This Phospholipase C gamma 2 antibody is un-conjugated
Application:	Western Blotting (WB)

Product Details

Purpose:	Phospho-PLC gamma 2 (PLCG2)-Y759 Rabbit pAb
Immunogen:	A synthetic phosphorylated peptide around Y759 of human PLC gamma 2 (PLCG2) (NP_002652.2).
Sequence:	RMVVD
Isotype:	IgG
Cross-Reactivity:	Human
Characteristics:	Phosphorylated Antibodies
Purification:	Affinity purification

Target Details

Target:	Phospholipase C gamma 2 (PLCG2)
Alternative Name:	PLCG2 (PLCG2 Products)
Background:	<p>The protein encoded by this gene is a transmembrane signaling enzyme that catalyzes the conversion of 1-phosphatidyl-1D-myo-inositol 4,5-bisphosphate to 1D-myo-inositol 1,4,5-trisphosphate (IP3) and diacylglycerol (DAG) using calcium as a cofactor. IP3 and DAG are second messenger molecules important for transmitting signals from growth factor receptors and immune system receptors across the cell membrane. Mutations in this gene have been found in autoinflammation, antibody deficiency, and immune dysregulation syndrome and familial cold autoinflammatory syndrome 3.,PLCG2,APLAID,FCAS3,PLC-IV,PLC-gamma-2,Cancer,Signal Transduction,ErbB-HER Signaling Pathway,MAPK-Erk Signaling Pathway,Cell Biology & Developmental Biology,Cytoskeleton,Actins,Endocrine & Metabolism,Lipid Metabolism,Hydrolysis,Immunology & Inflammation,B Cell Receptor Signaling Pathway,Cardiovascular,Angiogenesis,Lipids,Protein phosphorylation,PLCG2</p>
Molecular Weight:	147kDa
Gene ID:	5336
UniProt:	P16885
Pathways:	RTK Signaling , WNT Signaling , Fc-epsilon Receptor Signaling Pathway , Inositol Metabolic Process , Myometrial Relaxation and Contraction , Toll-Like Receptors Cascades , VEGF Signaling , BCR Signaling

Application Details

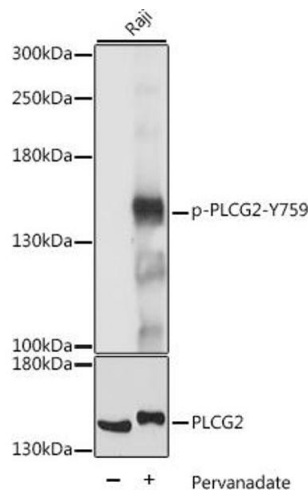
Application Notes:	WB,1:500 - 1:2000
Restrictions:	For Research Use only

Handling

Format:	Liquid
Buffer:	PBS with 0.02 % sodium azide,50 % glycerol, pH 7.3.
Preservative:	Sodium azide
Precaution of Use:	This product contains Sodium azide: a POISONOUS AND HAZARDOUS SUBSTANCE which should be handled by trained staff only.
Storage:	-20 °C

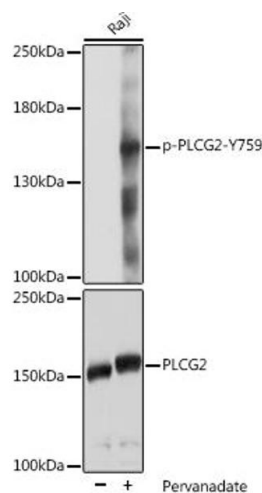
Storage Comment: Store at -20°C. Avoid freeze / thaw cycles.

Images



Western Blotting

Image 1. Western blot analysis of extracts of Raji cells, using Phospho-PLC gamma 2 (PLCG2)-Y759 antibody (ABIN7269341) at 1:2000 dilution or PLC gamma 2 (PLCG2) antibody (ABIN3023144, ABIN3023145, ABIN3023146 and ABIN6219411). Raji cells were treated by Pervanadate (1 mM) at 37 °C for 30 minutes. Secondary antibody: HRP Goat Anti-Rabbit IgG (H+L) (ABIN1684268 and ABIN3020597) at 1:10000 dilution. Lysates/proteins: 25 µg per lane. Blocking buffer: 3 % BSA. Detection: ECL Basic Kit (RM00020). Exposure time: 1 s.



Western Blotting

Image 2. Western blot analysis of extracts of Raji cells, using Phospho-PLC gamma 2 (PLCG2)-Y759 pAb (ABIN7269341) at 1:2000 dilution or PLC gamma 2 (PLCG2) antibody (ABIN3023144, ABIN3023145, ABIN3023146 and ABIN6219411). Raji cells were treated by Pervanadate (1 mM) at 37 °C for 30 minutes. Secondary antibody: HRP Goat Anti-Rabbit IgG (H+L) (ABIN1684268 and ABIN3020597) at 1:10000 dilution. Lysates/proteins: 25 µg per lane. Blocking buffer: 3 % BSA. Detection: ECL Basic Kit (RM00020). Exposure time: 1 s.