

Datasheet for ABIN726935
anti-MAG antibody (AA 551-626)[Go to Product page](#)

2 Images

Overview

| | |
|----------------------|------------------------------------|
| Quantity: | 100 µL |
| Target: | MAG |
| Binding Specificity: | AA 551-626 |
| Reactivity: | Human, Rat |
| Host: | Rabbit |
| Clonality: | Polyclonal |
| Conjugate: | This MAG antibody is un-conjugated |
| Application: | Western Blotting (WB), ELISA |

Product Details

| | |
|-------------------|---|
| Immunogen: | KLH conjugated synthetic peptide derived from human MAG |
| Isotype: | IgG |
| Cross-Reactivity: | Human, Rat |
| Purification: | Purified by Protein A. |

Target Details

| | |
|-------------------|---|
| Target: | MAG |
| Alternative Name: | MAG (MAG Products) |
| Background: | Synonyms: GMA, S-MAG, SIGLEC4A, SIGLEC-4A, Myelin-associated glycoprotein, MAG Background: Adhesion molecule in postnatal neural development that mediates sialic-acid |

Target Details

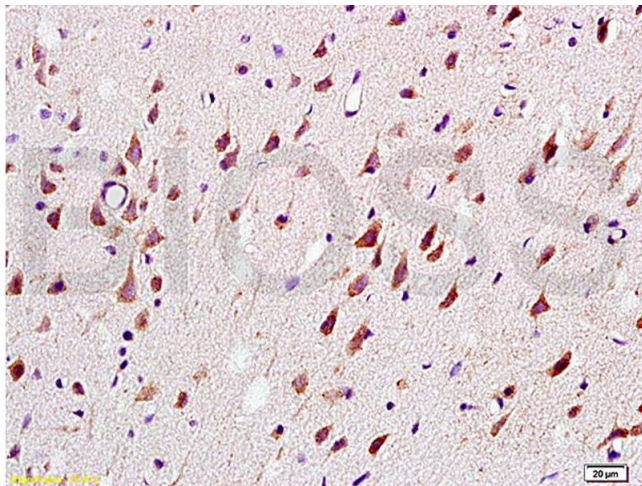
| | |
|-----------|--|
| | dependent cell-cell interactions between neuronal and myelinating cells. Preferentially binds to alpha-2,3-linked sialic acid (By similarity). |
| Gene ID: | 4099 |
| UniProt: | P20916 |
| Pathways: | Neurotrophin Signaling Pathway |

Application Details

| | |
|--------------------|---|
| Application Notes: | WB 1:300-5000 ELISA 1:500-1000 IHC-P 1:200-400 IHC-F 1:100-500 IF(IHC-P) 1:50-200 IF(IHC-F) 1:50-200 IF(ICC) 1:50-200 |
| Restrictions: | For Research Use only |

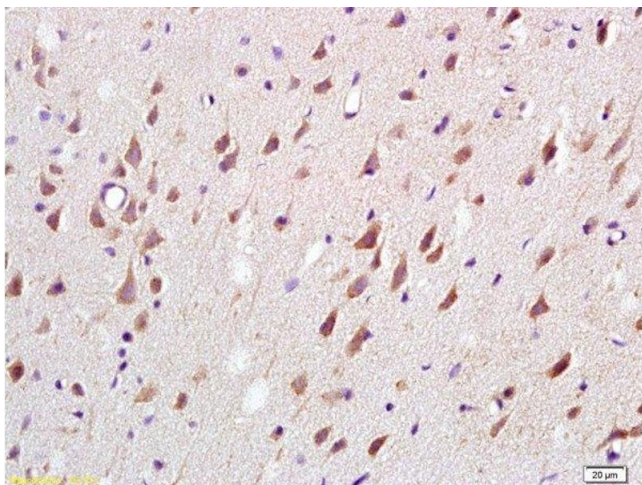
Handling

| | |
|--------------------|--|
| Format: | Liquid |
| Concentration: | 1 µg/µL |
| Buffer: | 0.01M TBS(pH 7.4) with 1 % BSA, 0.02 % Proclin300 and 50 % Glycerol. |
| Preservative: | ProClin |
| Precaution of Use: | This product contains ProClin: a POISONOUS AND HAZARDOUS SUBSTANCE, which should be handled by trained staff only. |
| Storage: | 4 °C,-20 °C |
| Storage Comment: | Shipped at 4°C. Store at -20°C for one year. Avoid repeated freeze/thaw cycles. |
| Expiry Date: | 12 months |



Immunohistochemistry

Image 1. Formalin-fixed and paraffin embedded: rat brain tissue labeled with Anti-MAG-a/L-MAG Polyclonal Antibody (ABIN726935), Unconjugated at 1:200, followed by conjugation to the secondary antibody and DAB staining



Immunohistochemistry (Paraffin-embedded Sections)

Image 2. Formalin-fixed and paraffin embedded: rat brain tissue labeled with Anti-MAG-a/L-MAG Polyclonal Antibody , Unconjugated at 1:200, followed by conjugation to the secondary antibody and DAB staining