



[Go to Product page](#)

Datasheet for ABIN7269377  
**anti-PINX1 antibody (AA 127-328)**

1 Image

Overview

Quantity:	100 µL
Target:	PINX1
Binding Specificity:	AA 127-328
Reactivity:	Human
Host:	Rabbit
Clonality:	Polyclonal
Conjugate:	This PINX1 antibody is un-conjugated
Application:	Western Blotting (WB)

Product Details

Purpose:	PINX1 Rabbit pAb
Immunogen:	Recombinant fusion protein containing a sequence corresponding to amino acids 127-328 of human PINX1 (NP_060354.4).
Sequence:	MKFTKGDLS SRSKTDLDCI FGKRQSKKTP EGDASPSTPE ENETTTTSAF TIQEYFAKRM AALKNKPQVP VPGSDISETQ VERKRGKKRN KEATGKDVES YLQPKAKRHT EGKPERAEAQ ERVAKKKSAP AEEQLRGPCW DQSSKASAQD AGDHVQPPEG RDFTLKPKKR RGKKKLQKPV EIAEDATLEE TLVKKKKKKD SK
Isotype:	IgG
Cross-Reactivity:	Human
Characteristics:	Polyclonal Antibodies

## Product Details

---

Purification: Affinity purification

## Target Details

---

Target: PINX1

Alternative Name: PINX1 ([PINX1 Products](#))

Background: Microtubule-binding protein essential for faithful chromosome segregation. Mediates TRF1 and TERT accumulation in nucleolus and enhances TRF1 binding to telomeres. Inhibits telomerase activity. May inhibit cell proliferation and act as tumor suppressor.,PINX1,LPTL,LPTS,Epigenetics & Nuclear Signaling,Cancer,Drug resistance,Topoisomerases,PINX1

Molecular Weight: 19kDa/37kDa

Gene ID: 54984

UniProt: [Q96BK5](#)

## Application Details

---

Application Notes: WB,1:500 - 1:2000

Restrictions: For Research Use only

## Handling

---

Format: Liquid

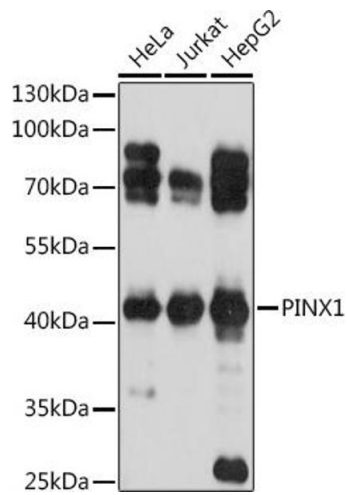
Buffer: PBS with 0.02 % sodium azide,50 % glycerol, pH 7.3.

Preservative: Sodium azide

Precaution of Use: This product contains Sodium azide: a POISONOUS AND HAZARDOUS SUBSTANCE which should be handled by trained staff only.

Storage: -20 °C

Storage Comment: Store at -20°C. Avoid freeze / thaw cycles.



### Western Blotting

**Image 1.** Western blot analysis of extracts of various cell lines, using PINX1 antibody (ABIN7269377) at 1:1000 dilution. Secondary antibody: HRP Goat Anti-Rabbit IgG (H+L) (ABIN1684268 and ABIN3020597) at 1:10000 dilution. Lysates/proteins: 25 µg per lane. Blocking buffer: 3 % nonfat dry milk in TBST. Detection: ECL Basic Kit (RM00020). Exposure time: 10s.