



[Go to Product page](#)

Datasheet for ABIN7269390
anti-Plasmolipin antibody (AA 1-100)

2 Images

Overview

Quantity:	100 µL
Target:	Plasmolipin
Binding Specificity:	AA 1-100
Reactivity:	Human
Host:	Rabbit
Clonality:	Polyclonal
Conjugate:	This Plasmolipin antibody is un-conjugated
Application:	Western Blotting (WB), Immunofluorescence (IF)

Product Details

Purpose:	PLLp Rabbit pAb
Immunogen:	A synthetic peptide corresponding to a sequence within amino acids 1-100 of human PLLP (NP_057077.1).
Sequence:	MAEFPSKVST RTSSPAQGAE ASVSALRPDL GFVRSRLGAL MLLQLVLGLL VWALIADTPY HLYPAYGWVM FVAVFLWLVT IVLFNLYLFQ LHMKLYMVPW
Isotype:	IgG
Cross-Reactivity:	Mouse, Rat
Characteristics:	Polyclonal Antibodies
Purification:	Affinity purification

Target Details

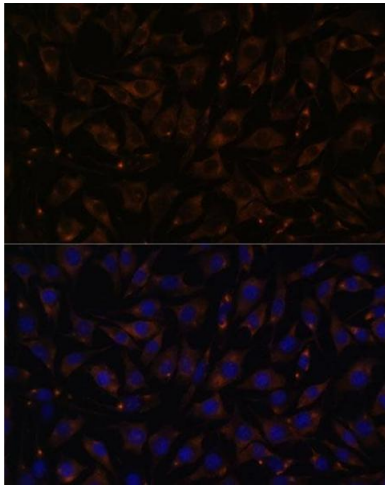
Target:	Plasmolipin
Alternative Name:	PLLP (Plasmolipin Products)
Background:	Appears to be involved in myelination. Could also participate in ion transport events as addition of plasmolipin to lipid bilayers induces the formation of ion channels, which are voltage-dependent and K(+)-selective (By similarity.,PLLP,PMLP,TM4SF11,Neuroscience,PLLP
Molecular Weight:	19kDa
Gene ID:	51090
UniProt:	Q9Y342

Application Details

Application Notes:	WB,1:500 - 1:2000,IF,1:50 - 1:200
Restrictions:	For Research Use only

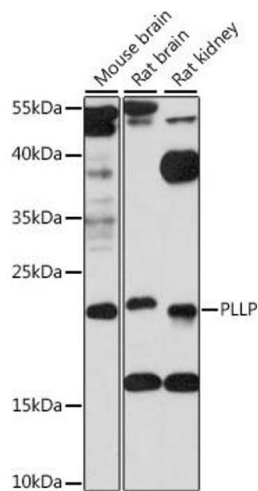
Handling

Format:	Liquid
Buffer:	PBS with 0.02 % sodium azide,50 % glycerol, pH 7.3.
Preservative:	Sodium azide
Precaution of Use:	This product contains Sodium azide: a POISONOUS AND HAZARDOUS SUBSTANCE which should be handled by trained staff only.
Storage:	-20 °C
Storage Comment:	Store at -20°C. Avoid freeze / thaw cycles.



Immunofluorescence

Image 1. Immunofluorescence analysis of L929 cells using PLLP antibody (ABIN7269390) at dilution of 1:100. Blue: DAPI for nuclear staining.



Western Blotting

Image 2. Western blot analysis of extracts of various cell lines, using PLLP antibody (ABIN7269390) at 1:1000 dilution. Secondary antibody: HRP Goat Anti-Rabbit IgG (H+L) (ABIN1684268 and ABIN3020597) at 1:10000 dilution. Lysates/proteins: 25 µg per lane. Blocking buffer: 3 % nonfat dry milk in TBST. Detection: ECL Basic Kit (RM00020). Exposure time: 10s.