

Datasheet for ABIN7269391
anti-PLS1 antibody (AA 1-110)

3 Images

[Go to Product page](#)

Overview

Quantity:	100 µL
Target:	PLS1
Binding Specificity:	AA 1-110
Reactivity:	Human
Host:	Rabbit
Clonality:	Polyclonal
Conjugate:	This PLS1 antibody is un-conjugated
Application:	Western Blotting (WB), Immunohistochemistry (IHC)

Product Details

Purpose:	PLS1 Rabbit pAb
Immunogen:	Recombinant fusion protein containing a sequence corresponding to amino acids 1-110 of human PLS1 (NP_001165783.1).
Sequence:	MENSTTTISR EELEELQEAF NKIDIDNSGY VSDYELQDLF KEASLPLPGY KVREIVEKIL SVADSNKDGK ISFEFVSLM QELKSKDISK TFRKIINKRE GITAIGGTST
Isotype:	IgG
Cross-Reactivity:	Human, Mouse, Rat
Characteristics:	Polyclonal Antibodies
Purification:	Affinity purification

Target Details

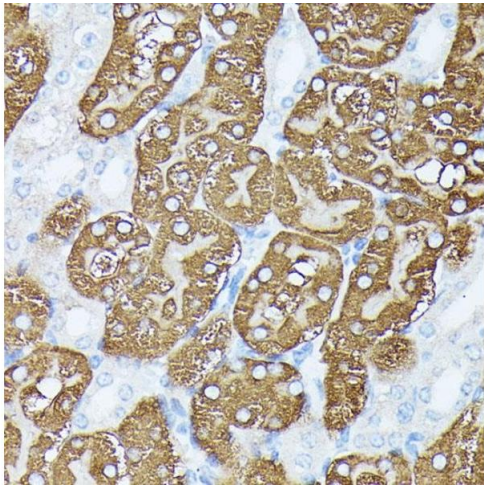
Target:	PLS1
Alternative Name:	PLS1 (PLS1 Products)
Background:	<p>Plastins are a family of actin-binding proteins that are conserved throughout eukaryote evolution and expressed in most tissues of higher eukaryotes. In humans, two ubiquitous plastin isoforms (L and T) have been identified. The protein encoded by this gene is a third distinct plastin isoform, which is specifically expressed at high levels in the small intestine. Alternatively spliced transcript variants varying in the 5' UTR, but encoding the same protein, have been found for this gene. A pseudogene of this gene is found on chromosome 11.,PLS1,plastin-1,Signal Transduction,Cell Biology & Developmental Biology,Cytoskeleton,Microfilaments,PLS1</p>
Molecular Weight:	70kDa
Gene ID:	5357
UniProt:	Q14651

Application Details

Application Notes:	WB,1:200 - 1:2000,IHC,1:50 - 1:200
Restrictions:	For Research Use only

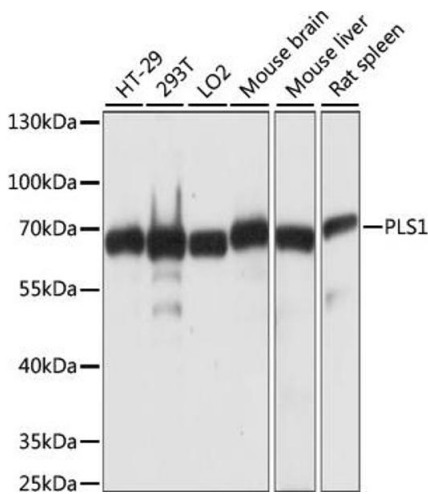
Handling

Format:	Liquid
Buffer:	PBS with 0.02 % sodium azide,50 % glycerol, pH 7.3.
Preservative:	Sodium azide
Precaution of Use:	This product contains Sodium azide: a POISONOUS AND HAZARDOUS SUBSTANCE which should be handled by trained staff only.
Storage:	-20 °C
Storage Comment:	Store at -20°C. Avoid freeze / thaw cycles.



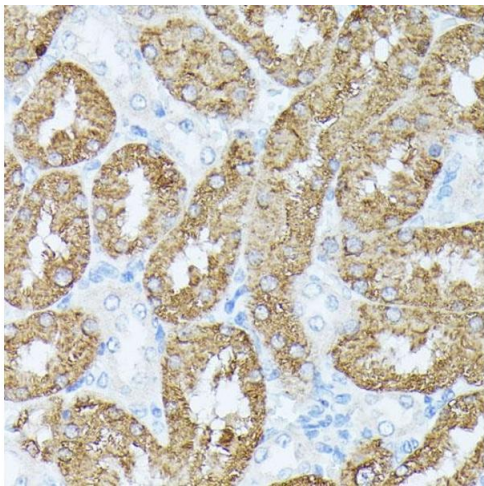
Immunohistochemistry

Image 1. Immunohistochemistry of paraffin-embedded mouse kidney using PLS1 antibody (ABIN7269391) at dilution of 1:100 (40x lens). Perform microwave antigen retrieval with 10 mM PBS buffer pH 7.2 before commencing with IHC staining protocol.



Western Blotting

Image 2. Western blot analysis of extracts of various cell lines, using PLS1 antibody (ABIN7269391) at 1:1000 dilution. Secondary antibody: HRP Goat Anti-Rabbit IgG (H+L) (ABIN1684268 and ABIN3020597) at 1:10000 dilution. Lysates/proteins: 25 µg per lane. Blocking buffer: 3 % nonfat dry milk in TBST. Detection: ECL Basic Kit (RM00020). Exposure time: 3s.



Immunohistochemistry

Image 3. Immunohistochemistry of paraffin-embedded rat kidney using PLS1 antibody (ABIN7269391) at dilution of 1:100 (40x lens). Perform microwave antigen retrieval with 10 mM PBS buffer pH 7.2 before commencing with IHC staining protocol.