



Datasheet for ABIN7269401
anti-PAFAH1B1 antibody



[Go to Product page](#)

4 Images

Overview

Quantity:	100 µL
Target:	PAFAH1B1
Reactivity:	Human
Host:	Rabbit
Clonality:	Monoclonal
Conjugate:	This PAFAH1B1 antibody is un-conjugated
Application:	Western Blotting (WB), Immunofluorescence (IF)

Product Details

Purpose:	LIS1 Rabbit mAb
Immunogen:	A synthesized peptide derived from human LIS1
Isotype:	IgG
Cross-Reactivity:	Human, Mouse, Rat
Characteristics:	Monoclonal Antibodies
Purification:	Affinity purification

Target Details

Target:	PAFAH1B1
Alternative Name:	PAFAH1B1 (PAFAH1B1 Products)
Background:	This locus was identified as encoding a gene that when mutated or lost caused the

Target Details

lissencephaly associated with Miller-Dieker lissencephaly syndrome. This gene encodes the non-catalytic alpha subunit of the intracellular I β isoform of platelet-activating factor acetylhydrolase, a heterotrimeric enzyme that specifically catalyzes the removal of the acetyl group at the SN-2 position of platelet-activating factor (identified as 1-O-alkyl-2-acetyl-sn-glycerol-3-phosphorylcholine). Two other isoforms of intracellular platelet-activating factor acetylhydrolase exist: one composed of multiple subunits, the other, a single subunit. In addition, a single-subunit isoform of this enzyme is found in serum. [provided by RefSeq, Apr 2009], LIS1, LIS2, MDCR, MDS, NudF, PAFAH, Epigenetics & Nuclear Signaling, Neuroscience, Signal Transduction, PAFAH1B1

Molecular Weight: 47kDa

Gene ID: 5048

UniProt: [P43034](#)

Pathways: [M Phase](#), [Regulation of Cell Size](#)

Application Details

Application Notes: WB, 1:500 - 1:2000, IF, 1:50 - 1:200

Restrictions: For Research Use only

Handling

Format: Liquid

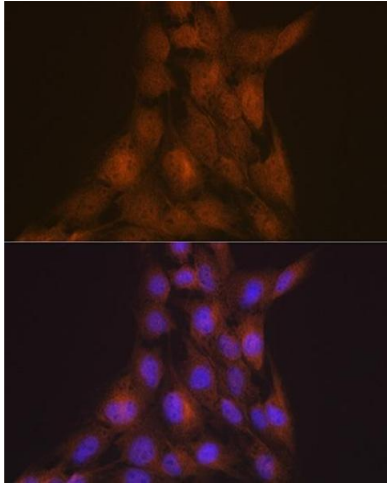
Buffer: PBS with 0.02 % sodium azide, 0.05 % BSA, 50 % glycerol, pH 7.3.

Preservative: Sodium azide

Precaution of Use: This product contains Sodium azide: a POISONOUS AND HAZARDOUS SUBSTANCE which should be handled by trained staff only.

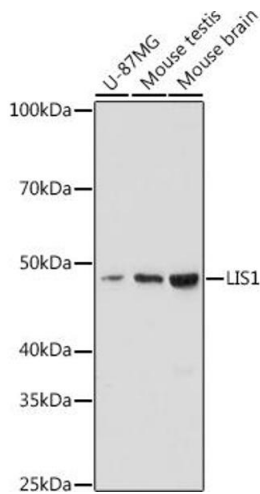
Storage: -20 °C

Storage Comment: Store at -20°C. Avoid freeze / thaw cycles.



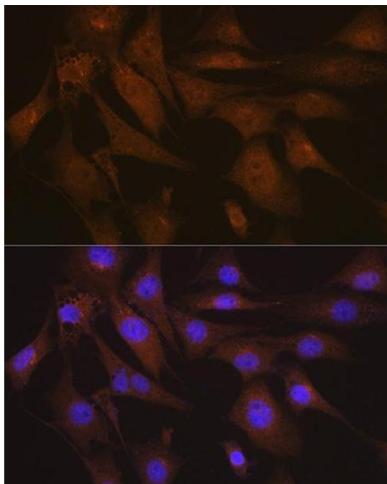
Immunofluorescence

Image 1. Immunofluorescence analysis of C6 cells using LIS1 Rabbit mAb (ABIN7269401) at dilution of 1:100 (40x lens). Blue: DAPI for nuclear staining.



Western Blotting

Image 2. Western blot analysis of extracts of various cell lines, using LIS1 antibody (ABIN7269401) at 1:1000 dilution. Secondary antibody: HRP Goat Anti-Rabbit IgG (H+L) (ABIN1684268 and ABIN3020597) at 1:10000 dilution. Lysates/proteins: 25 µg per lane. Blocking buffer: 3 % nonfat dry milk in TBST. Detection: ECL Enhanced Kit (RM00021). Exposure time: 180s.



Immunofluorescence

Image 3. Immunofluorescence analysis of NIH-3T3 cells using LIS1 Rabbit mAb (ABIN7269401) at dilution of 1:100 (40x lens). Blue: DAPI for nuclear staining.

Please check the [product details page](#) for more images. Overall 4 images are available for ABIN7269401.