

Datasheet for ABIN7269407

**anti-CD31 antibody**

5 Images

[Go to Product page](#)

## Overview

Quantity:	100 µL
Target:	CD31 (PECAM1)
Reactivity:	Human
Host:	Rabbit
Clonality:	Monoclonal
Conjugate:	This CD31 antibody is un-conjugated
Application:	Western Blotting (WB), Immunofluorescence (IF)

## Product Details

Purpose:	CD31/PECAM1 Rabbit mAb
Immunogen:	A synthesized peptide derived from human CD31/PECAM1
Isotype:	IgG
Cross-Reactivity:	Human, Mouse
Characteristics:	Monoclonal Antibodies
Purification:	Affinity purification

## Target Details

Target:	CD31 (PECAM1)
Alternative Name:	PECAM1 ( <a href="#">PECAM1 Products</a> )
Background:	The protein encoded by this gene is found on the surface of platelets, monocytes, neutrophils,

## Target Details

and some types of T-cells, and makes up a large portion of endothelial cell intercellular junctions. The encoded protein is a member of the immunoglobulin superfamily and is likely involved in leukocyte migration, angiogenesis, and integrin activation.,C85791, Cd31, PECAM-1, Pecam,Cancer,Tumor immunology,Invasion and Metastasis,Signal Transduction,Cell Biology & Developmental Biology,Cell Adhesion,Cell Adhesion Molecules,Cytoskeleton,Immunology & Inflammation,CD markers,Stem Cells,Hematopoietic Progenitors,Mesenchymal Stem Cells,Cardiovascular,Angiogenesis,Blood,PECAM1

Molecular Weight: 125kDa

Gene ID: 5175

UniProt: [P16284](#)

Pathways: [Regulation of Actin Filament Polymerization](#)

## Application Details

Application Notes: WB,1:500 - 1:2000,IF,1:50 - 1:200

Restrictions: For Research Use only

## Handling

Format: Liquid

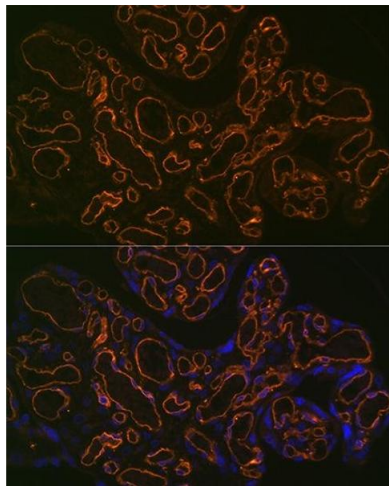
Buffer: PBS with 0.02 % sodium azide,0.05 % BSA,50 % glycerol, pH 7.3.

Preservative: Sodium azide

Precaution of Use: This product contains Sodium azide: a POISONOUS AND HAZARDOUS SUBSTANCE which should be handled by trained staff only.

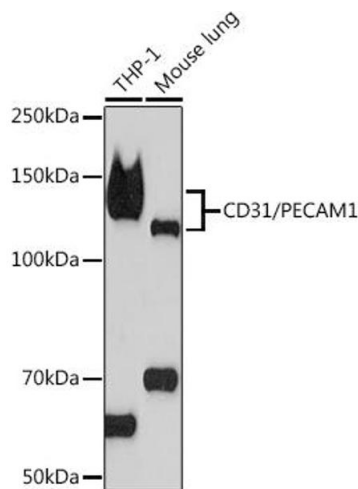
Storage: -20 °C

Storage Comment: Store at -20°C. Avoid freeze / thaw cycles.



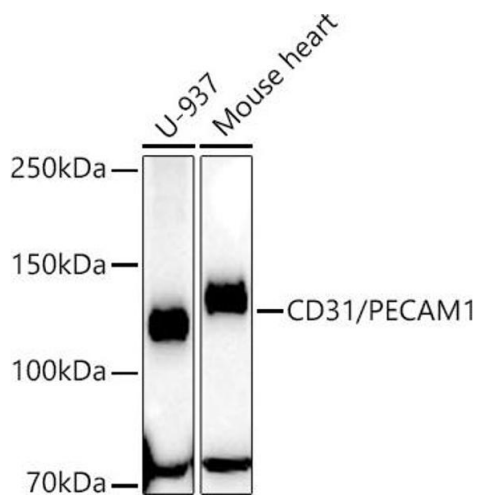
### Immunofluorescence

**Image 1.** Immunofluorescence analysis of human placenta using CD31/PEC Rabbit mAb (ABIN7269407) at dilution of 1:100 (40x lens). Blue: DAPI for nuclear staining.



### Western Blotting

**Image 2.** Western blot analysis of extracts of various cell lines, using CD31/PEC Rabbit mAb (ABIN7269407) at 1:1000 dilution. Secondary antibody: HRP Goat Anti-Rabbit IgG (H+L) (ABIN1684268 and ABIN3020597) at 1:10000 dilution. Lysates/proteins: 25 µg per lane. Blocking buffer: 3 % nonfat dry milk in TBST. Detection: ECL Basic Kit (RM00020). Exposure time: 90s.



### Western Blotting

**Image 3.** Western blot analysis of extracts of various cell lines, using CD31/PEC antibody (ABIN7269407) at 1:63400 dilution. Secondary antibody: HRP Goat Anti-Rabbit IgG (H+L) (ABIN1684268 and ABIN3020597) at 1:10000 dilution. Lysates/proteins: 25 µg per lane. Blocking buffer: 3 % nonfat dry milk in TBST. Detection: ECL Basic Kit (RM00020). Exposure time: 180s.

Please check the [product details page](#) for more images. Overall 5 images are available for ABIN7269407.