



[Go to Product page](#)

Datasheet for ABIN7269411
anti-PSD2 antibody (AA 1-190)

1 Image

Overview

Quantity:	100 µL
Target:	PSD2
Binding Specificity:	AA 1-190
Reactivity:	Human
Host:	Rabbit
Clonality:	Polyclonal
Conjugate:	This PSD2 antibody is un-conjugated
Application:	Western Blotting (WB)

Product Details

Purpose:	PSD2 Rabbit pAb
Immunogen:	Recombinant fusion protein containing a sequence corresponding to amino acids 1-190 of human PSD2 (NP_115665.1).
Sequence:	MEEDKLLSAV PEEGDATRDP GPEPEEEPGV RNGMASEGLN SSLCSPGHER RGTPADTEEP TKDPDVAFHG LSLGLSLTNG LALGPDLNIL EDSAESRPWR AGVLAEGDNA SRSLYPDAED PQLGLDGPGE PDVRDGFSAF FEKILESELL RGTQYSSLDS LDGLSLTDES DSCVSFEAPL TPLIQQRARD
Isotype:	IgG
Cross-Reactivity:	Human, Mouse, Rat
Characteristics:	Polyclonal Antibodies

Product Details

Purification: Affinity purification

Target Details

Target: PSD2

Alternative Name: PSD2 ([PSD2 Products](#))

Background: PSD2,EFA6C,PSD2

Molecular Weight: 84kDa

Gene ID: 84249

UniProt: [Q9BQI7](#)

Application Details

Application Notes: WB,1:500 - 1:2000

Restrictions: For Research Use only

Handling

Format: Liquid

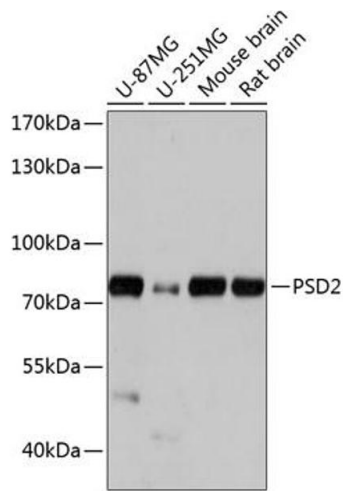
Buffer: PBS with 0.02 % sodium azide,50 % glycerol, pH 7.3.

Preservative: Sodium azide

Precaution of Use: This product contains Sodium azide: a POISONOUS AND HAZARDOUS SUBSTANCE which should be handled by trained staff only.

Storage: -20 °C

Storage Comment: Store at -20°C. Avoid freeze / thaw cycles.



Western Blotting

Image 1. Western blot analysis of extracts of various cell lines, using PSD2 antibody (ABIN7269411) at 1:1000 dilution. Secondary antibody: HRP Goat Anti-Rabbit IgG (H+L) (ABIN1684268 and ABIN3020597) at 1:10000 dilution. Lysates/proteins: 25 µg per lane. Blocking buffer: 3 % nonfat dry milk in TBST. Detection: ECL Basic Kit (RM00020). Exposure time: 5s.