



Datasheet for ABIN7269440
anti-PARP1 antibody



[Go to Product page](#)

5 Images

Overview

Quantity:	100 µL
Target:	PARP1
Reactivity:	Human
Host:	Rabbit
Clonality:	Monoclonal
Conjugate:	This PARP1 antibody is un-conjugated
Application:	Western Blotting (WB), Immunohistochemistry (IHC)

Product Details

Purpose:	PARP1 Rabbit mAb
Immunogen:	A synthesized peptide derived from human PARP1.
Isotype:	IgG
Cross-Reactivity:	Human, Mouse, Rat
Characteristics:	Monoclonal Antibodies
Purification:	Affinity purification

Target Details

Target:	PARP1
Alternative Name:	PARP1 (PARP1 Products)
Background:	This gene encodes a chromatin-associated enzyme, poly(ADP-ribose)transferase, which

Target Details

modifies various nuclear proteins by poly(ADP-ribose)ation. The modification is dependent on DNA and is involved in the regulation of various important cellular processes such as differentiation, proliferation, and tumor transformation and also in the regulation of the molecular events involved in the recovery of cell from DNA damage. In addition, this enzyme may be the site of mutation in Fanconi anemia, and may participate in the pathophysiology of type I diabetes. [provided by RefSeq, Jul 2008],ADPRT,ADPRT 1,ADPRT1,ARTD1,PARP,PARP-1,PPOL,pADPRT-1,PARP1,Cleaved PARP,PARP1,Cell Biology & Developmental Biology,Cell Cycle,Cell Cycle_Centrosome,Death Receptor Signaling Pathway,DNA Damage & Repair,Epigenetic writers and erasers of core Histones,Epigenetic writers and erasers of core Histones_other,Epigenetics & Nuclear Signaling,Immunology & Inflammation,NF-kB Signaling Pathway,RNA Binding,Signal Transduction,PARP1

Molecular Weight: 113,89kDa

Gene ID: 142

UniProt: [P09874](#)

Pathways: [Apoptosis](#), [Caspase Cascade in Apoptosis](#), [DNA Damage Repair](#), [Production of Molecular Mediator of Immune Response](#), [Maintenance of Protein Location](#)

Application Details

Application Notes: WB,1:500 - 1:2000,IHC,1:50 - 1:200

Restrictions: For Research Use only

Handling

Format: Liquid

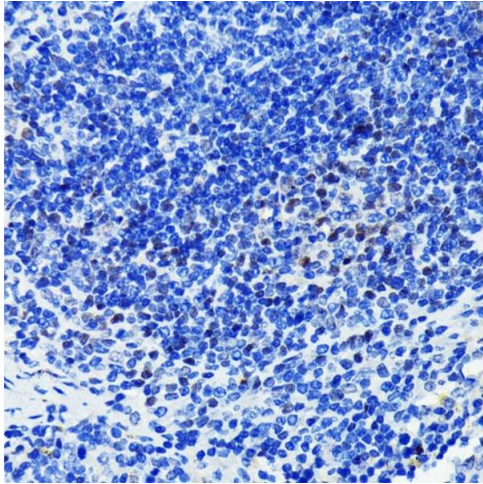
Buffer: PBS with 0.02 % sodium azide,0.05 % BSA,50 % glycerol, pH 7.3.

Preservative: Sodium azide

Precaution of Use: This product contains Sodium azide: a POISONOUS AND HAZARDOUS SUBSTANCE which should be handled by trained staff only.

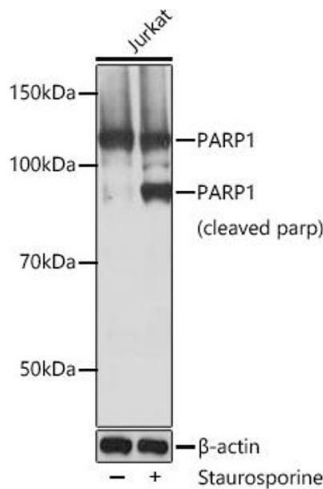
Storage: -20 °C

Storage Comment: Store at -20°C. Avoid freeze / thaw cycles.



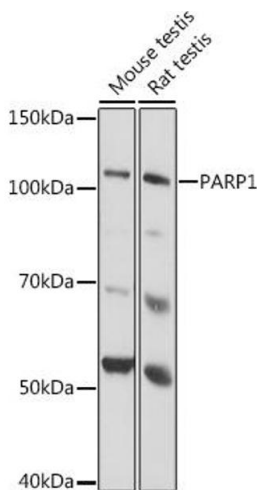
Immunohistochemistry

Image 1. Immunohistochemistry of paraffin-embedded mouse spleen using P antibody at dilution of 1:100 (40x lens). Perform microwave antigen retrieval with 10 mM PBS buffer pH 7.2 before commencing with IHC staining protocol.



Western Blotting

Image 2. Western blot analysis of extracts of Jurkat cells, using P antibody at 1:1000 dilution. Jurkat cells were treated by Staurosporine (1 μ M) at room temperature for 3 hours. Secondary antibody: HRP Goat Anti-Rabbit IgG (H+L) (ABIN1684268 and ABIN3020597) at 1:10000 dilution. Lysates/proteins: 25 μ g per lane. Blocking buffer: 3% nonfat dry milk in TBST. Detection: ECL Basic Kit (RM00020). Exposure time: 1s.



Western Blotting

Image 3. Western blot analysis of extracts of various cell lines, using P antibody at 1:1000 dilution. Secondary antibody: HRP Goat Anti-Rabbit IgG (H+L) (ABIN1684268 and ABIN3020597) at 1:10000 dilution. Lysates/proteins: 25 μ g per lane. Blocking buffer: 3% nonfat dry milk in TBST. Detection: ECL Basic Kit (RM00020). Exposure time: 1s.

Please check the [product details page](#) for more images. Overall 5 images are available for ABIN7269440.