



Datasheet for ABIN7269447
anti-PNLDC1 antibody (AA 200-500)



[Go to Product page](#)

1 Image

Overview

Quantity:	100 µL
Target:	PNLDC1
Binding Specificity:	AA 200-500
Reactivity:	Human
Host:	Rabbit
Clonality:	Polyclonal
Conjugate:	This PNLDC1 antibody is un-conjugated
Application:	Western Blotting (WB)

Product Details

Purpose:	PNLDC1 Rabbit pAb
Immunogen:	Recombinant fusion protein containing a sequence corresponding to amino acids 200-500 of human PNLDC1 (NP_775787.1).
Sequence:	DEGVVVKVS KQHRWYLQNT SCDRESCWKE NILLSARGFS VFFQMLVKAQ KPLVGHNMMM DLLHLHEKFF RPLPESYDQF KQNIHSLFPV LIDTKSVTKD IWKEMNFPRV SNLSEVYEVL NSDLNPTKNS GPEIVHASRC EKYVETKCPH EAYDAFLCG SVLLKVAHLL LQKIYHIDPV PESSFPQYLD VLAPYVNQVN LIRAGVPKIN FSGPDYPSIR PPILILSVKR WPGVSEQQVY HKFQNLCKFD VRRLTRSQFL LLTNKFKDAR NILKEYRDHP TLCISLYRYW RHSPNVNCLL Q
Isotype:	IgG
Cross-Reactivity:	Human, Mouse, Rat
Characteristics:	Polyclonal Antibodies

Product Details

Purification: Affinity purification

Target Details

Target: PNLDC1

Alternative Name: PNLDC1 ([PNLDC1 Products](#))

Background: 3'-exoribonuclease that has a preference for poly(A tails of mRNAs, thereby efficiently degrading poly(A tails. Exonucleolytic degradation of the poly(A tail is often the first step in the decay of eukaryotic mRNAs and is also used to silence certain maternal mRNAs translationally during oocyte maturation and early embryonic development. May act as a regulator of multipotency in embryonic stem cells (By similarity.,HsPNLDC1,PNLDC1,PNLDC1

Gene ID: 154197

UniProt: [Q8NA58](#)

Application Details

Application Notes: WB,1:500 - 1:2000

Restrictions: For Research Use only

Handling

Format: Liquid

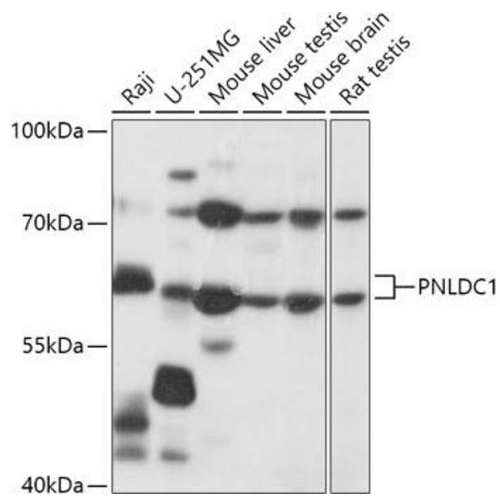
Buffer: PBS with 0.02 % sodium azide,50 % glycerol, pH 7.3.

Preservative: Sodium azide

Precaution of Use: This product contains Sodium azide: a POISONOUS AND HAZARDOUS SUBSTANCE which should be handled by trained staff only.

Storage: -20 °C

Storage Comment: Store at -20°C. Avoid freeze / thaw cycles.



Western Blotting

Image 1. Western blot analysis of extracts of various cell lines, using PNLDC1 antibody (ABIN7269447) at 1:1000 dilution. Secondary antibody: HRP Goat Anti-Rabbit IgG (H+L) (ABIN1684268 and ABIN3020597) at 1:10000 dilution. Lysates/proteins: 25 µg per lane. Blocking buffer: 3 % nonfat dry milk in TBST. Detection: ECL Basic Kit (RM00020). Exposure time: 15s.