

Datasheet for ABIN7269454
anti-PHC2 antibody (AA 250-323)[Go to Product page](#)

1 Image

Overview

| | |
|----------------------|-------------------------------------|
| Quantity: | 100 µL |
| Target: | PHC2 (PhC2) |
| Binding Specificity: | AA 250-323 |
| Reactivity: | Human |
| Host: | Rabbit |
| Clonality: | Polyclonal |
| Conjugate: | This PHC2 antibody is un-conjugated |
| Application: | Western Blotting (WB) |

Product Details

| | |
|-------------------|--|
| Purpose: | PHC2 Rabbit pAb |
| Immunogen: | Recombinant fusion protein containing a sequence corresponding to amino acids 250-323 of human PHC2 (NP_004418.2). |
| Sequence: | HFLPSEPTKW NVEDVYEFIR SLPGCQEIAE EFRAQEIDGQ ALLLLKEDHL MSAMNIKLGP ALKIYARISM LKDS |
| Isotype: | IgG |
| Cross-Reactivity: | Human |
| Characteristics: | Polyclonal Antibodies |
| Purification: | Affinity purification |

Target Details

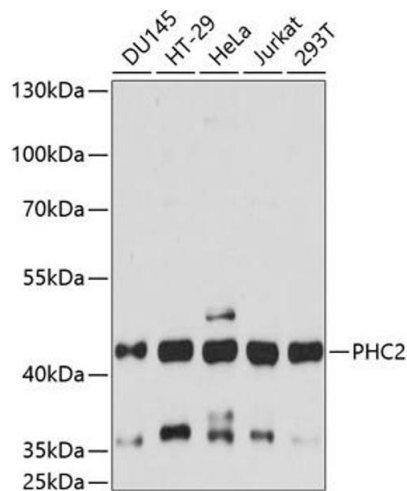
| | |
|-------------------|--|
| Target: | PHC2 (PhC2) |
| Alternative Name: | PHC2 (PhC2 Products) |
| Background: | In Drosophila melanogaster, the 'Polycomb' group (PcG) of genes are part of a cellular memory system that is responsible for the stable inheritance of gene activity. PcG proteins form a large multimeric, chromatin-associated protein complex. The protein encoded by this gene has homology to the Drosophila PcG protein 'polyhomeotic' (Ph) and is known to heterodimerize with EDR1 and colocalize with BMI1 in interphase nuclei of human cells. The specific function in human cells has not yet been determined. Two transcript variants encoding different isoforms have been found for this gene.,PHC2,EDR2,HPH2,PH2,Epigenetics & Nuclear Signaling,Chromatin Remodeling,PHC2 |
| Molecular Weight: | 30kDa/35kDa/87kDa/90kDa |
| Gene ID: | 1912 |
| UniProt: | Q8IXK0 |

Application Details

| | |
|--------------------|-----------------------|
| Application Notes: | WB,1:500 - 1:2000 |
| Restrictions: | For Research Use only |

Handling

| | |
|--------------------|--|
| Format: | Liquid |
| Buffer: | PBS with 0.02 % sodium azide,50 % glycerol, pH 7.3. |
| Preservative: | Sodium azide |
| Precaution of Use: | This product contains Sodium azide: a POISONOUS AND HAZARDOUS SUBSTANCE which should be handled by trained staff only. |
| Storage: | -20 °C |
| Storage Comment: | Store at -20°C. Avoid freeze / thaw cycles. |



Western Blotting

Image 1. Western blot analysis of extracts of various cell lines, using PHC2 antibody (ABIN7269454) at 1:3000 dilution. Secondary antibody: HRP Goat Anti-Rabbit IgG (H+L) (ABIN1684268 and ABIN3020597) at 1:10000 dilution. Lysates/proteins: 25 µg per lane. Blocking buffer: 3 % nonfat dry milk in TBST. Detection: ECL Basic Kit (RM00020). Exposure time: 90s.