



[Go to Product page](#)

Datasheet for ABIN7269457
anti-POLDIP2 antibody (AA 250-350)

1 Image

Overview

Quantity:	100 µL
Target:	POLDIP2
Binding Specificity:	AA 250-350
Reactivity:	Human
Host:	Rabbit
Clonality:	Polyclonal
Conjugate:	This POLDIP2 antibody is un-conjugated
Application:	Western Blotting (WB)

Product Details

Purpose:	POLDIP2 Rabbit pAb
Immunogen:	A synthetic peptide corresponding to a sequence within amino acids 250-350 of human POLDIP2 (NP_056399.1).
Sequence:	MGMREAQNSH VYWWRYCIRL ENLSDVVQL RERHWRIFSL SGTLETVRGR GVVGREPVLS KEQPAFQYSS HVSLQASSGH MWGTFRFERP DGSDFDVRIP P
Isotype:	IgG
Cross-Reactivity:	Human, Mouse, Rat
Characteristics:	Polyclonal Antibodies
Purification:	Affinity purification

Target Details

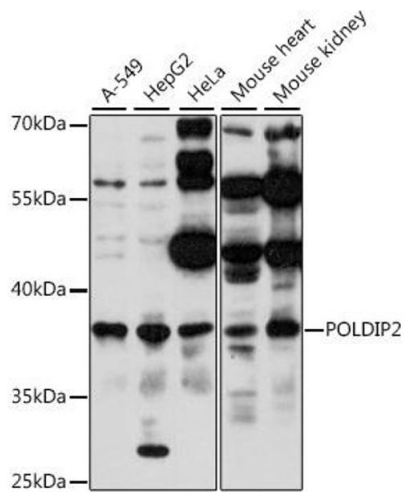
Target:	POLDIP2
Alternative Name:	POLDIP2 (POLDIP2 Products)
Background:	This gene encodes a protein that interacts with the DNA polymerase delta p50 subunit, as well as with proliferating cell nuclear antigen. The encoded protein maybe play a role in the ability of the replication fork to bypass DNA lesions. Alternative splicing results in multiple transcript variants.,POLDIP2,PDIP38,POLD4,p38,Epigenetics & Nuclear Signaling,Endocrine & Metabolism,Mitochondrial metabolism,POLDIP2
Molecular Weight:	42kDa
Gene ID:	26073
UniProt:	Q9Y2S7

Application Details

Application Notes:	WB,1:500 - 1:2000
Restrictions:	For Research Use only

Handling

Format:	Liquid
Buffer:	PBS with 0.02 % sodium azide,50 % glycerol, pH 7.3.
Preservative:	Sodium azide
Precaution of Use:	This product contains Sodium azide: a POISONOUS AND HAZARDOUS SUBSTANCE which should be handled by trained staff only.
Storage:	-20 °C
Storage Comment:	Store at -20°C. Avoid freeze / thaw cycles.



Western Blotting

Image 1. Western blot analysis of extracts of various cell lines, using POLDIP2 antibody (ABIN7269457) at 1:1000 dilution. Secondary antibody: HRP Goat Anti-Rabbit IgG (H+L) (ABIN1684268 and ABIN3020597) at 1:10000 dilution. Lysates/proteins: 25 µg per lane. Blocking buffer: 3% nonfat dry milk in TBST. Detection: ECL Basic Kit (RM00020). Exposure time: 10s.