



[Go to Product page](#)

Datasheet for ABIN7269489

anti-KCNG4 antibody (AA 1-220)

1 Image

Overview

Quantity:	100 µL
Target:	KCNG4 (Kcng4)
Binding Specificity:	AA 1-220
Reactivity:	Human
Host:	Rabbit
Clonality:	Polyclonal
Conjugate:	This KCNG4 antibody is un-conjugated
Application:	Western Blotting (WB)

Product Details

Purpose:	KCNG4 Rabbit pAb
Immunogen:	Recombinant fusion protein containing a sequence corresponding to amino acids 1-220 of human KCNG4 (NP_758857.1).
Sequence:	MPMPSRDGG L HPRHHHYGSH SPWSQLLSSP METPSIKGLY YRRVRKVGAL DASPVDLKKE ILINVGRRY LLPWSTLDRF PLSRLSKLRL CRSYEEIVQL CDDYDEDSQE FFFDRSPSAF GVIVSFLAAG KLVLLQEMCA LSFQEELAYW GIEEAHLERC CLRKLLRKLE ELEELAKLHR EDVLRQQRET RRPASHSSRW GLCMNRLREM VENPQSGLPG
Isotype:	IgG
Cross-Reactivity:	Human, Mouse, Rat
Characteristics:	Polyclonal Antibodies

Product Details

Purification: Affinity purification

Target Details

Target: KCNG4 (Kcng4)

Alternative Name: KCNG4 ([Kcng4 Products](#))

Background: Voltage-gated potassium (Kv) channels represent the most complex class of voltage-gated ion channels from both functional and structural standpoints. Their diverse functions include regulating neurotransmitter release, heart rate, insulin secretion, neuronal excitability, epithelial electrolyte transport, smooth muscle contraction, and cell volume. This gene encodes a member of the potassium channel, voltage-gated, subfamily G. This member functions as a modulatory subunit. The gene has strong expression in brain. Multiple alternatively spliced variants have been found in normal and cancerous tissues.,KCNG4,KV6.3,KV6.4,Signal Transduction,Endocrine & Metabolism,Neuroscience,KCNG4

Molecular Weight: 29kDa/58kDa

Gene ID: 93107

UniProt: [Q8TDN1](#)

Application Details

Application Notes: WB,1:500 - 1:2000

Restrictions: For Research Use only

Handling

Format: Liquid

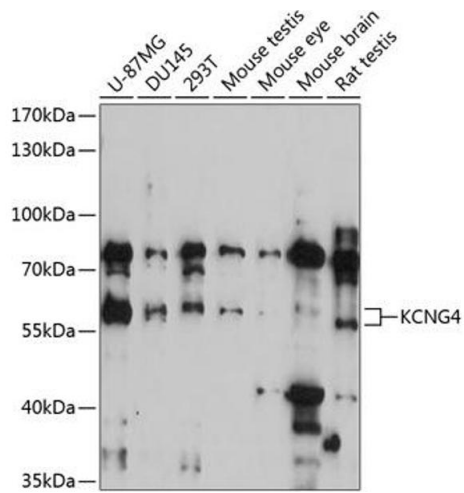
Buffer: PBS with 0.02 % sodium azide,50 % glycerol, pH 7.3.

Preservative: Sodium azide

Precaution of Use: This product contains Sodium azide: a POISONOUS AND HAZARDOUS SUBSTANCE which should be handled by trained staff only.

Storage: -20 °C

Storage Comment: Store at -20°C. Avoid freeze / thaw cycles.



Western Blotting

Image 1. Western blot analysis of extracts of various cell lines, using KCNG4 antibody (ABIN7269489) at 1:3000 dilution. Secondary antibody: HRP Goat Anti-Rabbit IgG (H+L) (ABIN1684268 and ABIN3020597) at 1:10000 dilution. Lysates/proteins: 25 µg per lane. Blocking buffer: 3 % nonfat dry milk in TBST. Detection: ECL Enhanced Kit (RM00021). Exposure time: 60s.