



Datasheet for ABIN7269505

## anti-PRP19 antibody



[Go to Product page](#)

### 6 Images

#### Overview

Quantity:	100 µL
Target:	PRP19 (PRPF19)
Reactivity:	Human
Host:	Rabbit
Clonality:	Monoclonal
Conjugate:	This PRP19 antibody is un-conjugated
Application:	Western Blotting (WB), Immunohistochemistry (IHC), Immunofluorescence (IF)

#### Product Details

Purpose:	PRP19 Rabbit mAb
Immunogen:	A synthesized peptide derived from human PRP19
Isotype:	IgG
Cross-Reactivity:	Human, Mouse, Rat
Characteristics:	Monoclonal Antibodies
Purification:	Affinity purification

#### Target Details

Target:	PRP19 (PRPF19)
Alternative Name:	PRPF19 ( <a href="#">PRPF19 Products</a> )
Background:	PSO4 is the human homolog of yeast Pso4, a gene essential for cell survival and DNA repair

## Target Details

---

(Beck et al., 2008 [PubMed 18263876]).[supplied by OMIM, Sep 2008],NMP200, PRP19, PSO4, SNEV, UBOX4, hPSO4,Cell Biology & Developmental Biology,DNA Damage & Repair,Epigenetics & Nuclear Signaling,Ubiquitin,Ubiquitin\_Ubiquitin-Proteasome Signaling Pathway,PRPF19

Molecular Weight: 55kDa

Gene ID: 27339

UniProt: [Q9UMS4](#)

Pathways: [Ribonucleoprotein Complex Subunit Organization](#)

## Application Details

---

Application Notes: WB,1:500 - 1:2000,IHC,1:50 - 1:200,IF,1:50 - 1:200

Restrictions: For Research Use only

## Handling

---

Format: Liquid

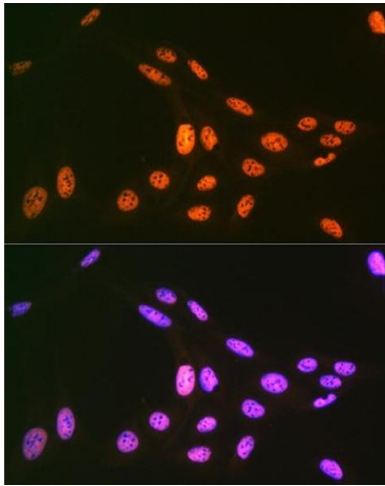
Buffer: PBS with 0.02 % sodium azide,0.05 % BSA,50 % glycerol, pH 7.3.

Preservative: Sodium azide

Precaution of Use: This product contains Sodium azide: a POISONOUS AND HAZARDOUS SUBSTANCE which should be handled by trained staff only.

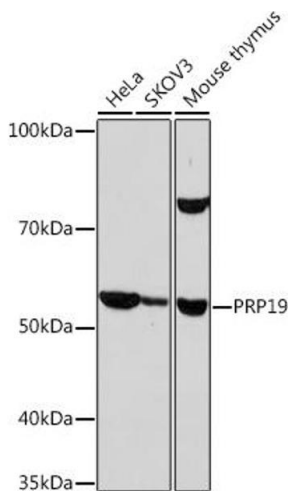
Storage: -20 °C

Storage Comment: Store at -20°C. Avoid freeze / thaw cycles.



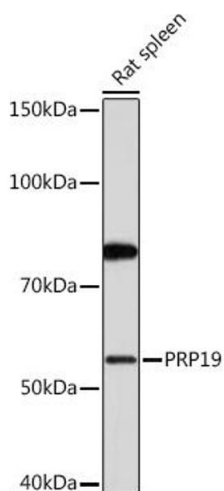
### Immunofluorescence

**Image 1.** Immunofluorescence analysis of U-2 OS cells using PRP19 Rabbit mAb (ABIN7269505) at dilution of 1:100 (40x lens). Blue: DAPI for nuclear staining.



### Western Blotting

**Image 2.** Western blot analysis of extracts of various cell lines, using PRP19 Rabbit mAb (ABIN7269505) at 1:1000 dilution. Secondary antibody: HRP Goat Anti-Rabbit IgG (H+L) (ABIN1684268 and ABIN3020597) at 1:10000 dilution. Lysates/proteins: 25 µg per lane. Blocking buffer: 3 % nonfat dry milk in TBST. Detection: ECL Basic Kit (RM00020). Exposure time: 10s.



### Western Blotting

**Image 3.** Western blot analysis of extracts of Rat spleen, using PRP19 Rabbit mAb (ABIN7269505) at 1:1000 dilution. Secondary antibody: HRP Goat Anti-Rabbit IgG (H+L) (ABIN1684268 and ABIN3020597) at 1:10000 dilution. Lysates/proteins: 25 µg per lane. Blocking buffer: 3 % nonfat dry milk in TBST. Detection: ECL Basic Kit (RM00020). Exposure time: 3 min.

Please check the [product details page](#) for more images. Overall 6 images are available for ABIN7269505.