



## Datasheet for ABIN7269507 anti-PRAME antibody (AA 1-200)



[Go to Product page](#)

### 1 Image

#### Overview

Quantity:	100 µL
Target:	PRAME
Binding Specificity:	AA 1-200
Reactivity:	Human
Host:	Rabbit
Clonality:	Polyclonal
Conjugate:	This PRAME antibody is un-conjugated
Application:	Western Blotting (WB)

#### Product Details

Purpose:	PRAME Rabbit pAb
Immunogen:	Recombinant fusion protein containing a sequence corresponding to amino acids 1-200 of human PRAME (NP_006106.1).
Sequence:	MERRRLWGSIQSRYISMSVW TSPRRLVELA GQSLKDEAL AIAALELLPR ELFPPLFMAA FDGRHSQTLK AMVQAWPFTC LPLGVLMKGQ HLHLETFKAV LDGLDVLLAQ EVRPRRWKLG VLDLRKNSHQ DFWTVWSGNR ASLYSFPEPE AAQPMTKKRK VDGLSTEAQ PFIPVEVLVD LFLKEGACDE LFSYLIEKVK
Isotype:	IgG
Cross-Reactivity:	Human, Mouse, Rat
Characteristics:	Polyclonal Antibodies

## Product Details

---

Purification: Affinity purification

## Target Details

---

Target: PRAME

Alternative Name: PRAME ([PRAME Products](#))

Background: This gene encodes an antigen that is preferentially expressed in human melanomas and that is recognized by cytolytic T lymphocytes. It is not expressed in normal tissues, except testis. The encoded protein acts as a repressor of retinoic acid receptor, and likely confers a growth advantage to cancer cells via this function. Alternative splicing results in multiple transcript variants.,PRAME,CT130,MAPE,OIP-4,OIP4,Epigenetics & Nuclear Signaling,Nuclear Receptor Signaling,Cancer,Tumor biomarkers,PRAME

Molecular Weight: 57kDa

Gene ID: 23532

UniProt: [P78395](#)

Pathways: [Retinoic Acid Receptor Signaling Pathway](#), [Nuclear Hormone Receptor Binding](#)

## Application Details

---

Application Notes: WB,1:500 - 1:2000

Restrictions: For Research Use only

## Handling

---

Format: Liquid

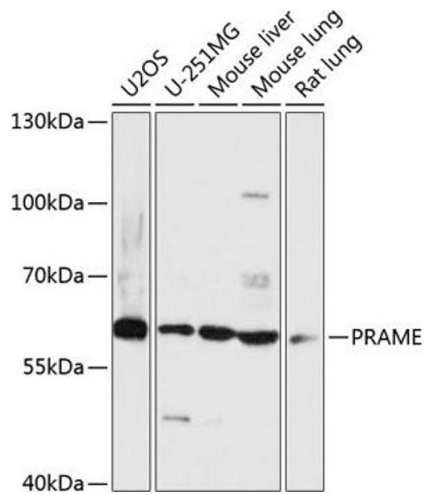
Buffer: PBS with 0.02 % sodium azide,50 % glycerol, pH 7.3.

Preservative: Sodium azide

Precaution of Use: This product contains Sodium azide: a POISONOUS AND HAZARDOUS SUBSTANCE which should be handled by trained staff only.

Storage: -20 °C

Storage Comment: Store at -20°C. Avoid freeze / thaw cycles.



### Western Blotting

**Image 1.** Western blot analysis of extracts of various cell lines, using PRAME antibody (ABIN7269507) at 1:3000 dilution. Secondary antibody: HRP Goat Anti-Rabbit IgG (H+L) (ABIN1684268 and ABIN3020597) at 1:10000 dilution. Lysates/proteins: 25 µg per lane. Blocking buffer: 3 % nonfat dry milk in TBST. Detection: ECL Basic Kit (RM00020). Exposure time: 15s.