

Datasheet for ABIN7269509  
**anti-POF1B antibody (AA 330-560)**[Go to Product page](#)

## 1 Image

## Overview

Quantity:	100 µL
Target:	POF1B
Binding Specificity:	AA 330-560
Reactivity:	Human
Host:	Rabbit
Clonality:	Polyclonal
Conjugate:	This POF1B antibody is un-conjugated
Application:	Western Blotting (WB)

## Product Details

Purpose:	POF1B Rabbit pAb
Immunogen:	Recombinant fusion protein containing a sequence corresponding to amino acids 330-560 of human POF1B (NP_079197.3).
Sequence:	LVLSTFSNIR EELGHLQNDM TSLENDKMRL EKDSLFDKDTQ LKEYEELLAS VRANNHQQQQ GLQDSSSKCQ ALEENNLSLR HTLSDMEYRL KELEYCKRNL EQENQNLRMQ VSETCTGPML QAKMDEIGNH YTEMVKNLRM EKDREICRLR SQLNQYHKDV SKREGSCSDF QFKLHELTSL LEEKDSLIR QSEELSKLRQ EIYSSHNQPS TGGRTTITTK KYRTQYPILG L
Isotype:	IgG
Cross-Reactivity:	Human, Rat
Characteristics:	Polyclonal Antibodies

## Product Details

Purification: Affinity purification

## Target Details

Target: POF1B

Alternative Name: POF1B ([POF1B Products](#))

Background: Premature ovarian failure (POF) is characterized by primary or secondary amenorrhea in women less than 40 years old. Two POF susceptibility regions called "POF1" and "POF2" have been identified by breakpoint mapping of X-autosome translocations. POF1 extends from Xq21-qter while POF2 extends from Xq13.3 to Xq21.1. This gene, POF1B, resides in the POF2 region. This gene is expressed at trace levels in mouse prenatal ovary and is barely detectable or absent from adult ovary, in human and in the mouse respectively. This gene's expression is restricted to epithelia with its highest expression in the epidermis, and oro-pharyngeal and gastro-intestinal tracts. The protein encoded by this gene binds non-muscle actin filaments. The role this gene may play in the etiology of premature ovarian failure remains to be determined. [provided by RefSeq, Jan 2010],POF;POF2B;POF1B,Signal Transduction,Cell Biology & Developmental Biology,Cell Adhesion,Tight Junctions,Cytoskeleton,Microfilaments,POF1B

Gene ID: 79983

UniProt: [Q8WVV4](#)

## Application Details

Application Notes: WB,1:500 - 1:2000

Restrictions: For Research Use only

## Handling

Format: Liquid

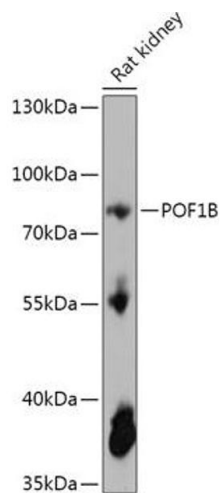
Buffer: PBS with 0.02 % sodium azide,50 % glycerol, pH 7.3.

Preservative: Sodium azide

Precaution of Use: This product contains Sodium azide: a POISONOUS AND HAZARDOUS SUBSTANCE which should be handled by trained staff only.

Storage: -20 °C

Storage Comment: Store at -20°C. Avoid freeze / thaw cycles.



### Western Blotting

**Image 1.** Western blot analysis of extracts of Rat kidney, using POF1B antibody (ABIN7269509) at 1:1000 dilution. Secondary antibody: HRP Goat Anti-Rabbit IgG (H+L) (ABIN1684268 and ABIN3020597) at 1:10000 dilution. Lysates/proteins: 25 µg per lane. Blocking buffer: 3 % nonfat dry milk in TBST. Detection: ECL Basic Kit (RM00020). Exposure time: 3s.