



[Go to Product page](#)

Datasheet for ABIN7269510

anti-Melanoma gp100 antibody (AA 25-300)

2 Images

Overview

Quantity:	100 µL
Target:	Melanoma gp100 (PMEL)
Binding Specificity:	AA 25-300
Reactivity:	Human
Host:	Rabbit
Clonality:	Polyclonal
Conjugate:	This Melanoma gp100 antibody is un-conjugated
Application:	Immunofluorescence (IF), Western Blotting (WB)

Product Details

Purpose:	PMEL Rabbit pAb
Immunogen:	Recombinant fusion protein containing a sequence corresponding to amino acids 25-300 of human PMEL (NP_008859.1).
Sequence:	KVPRNQDWLG VSRQLRTKAW NRQLYPEWTE AQRDCWRGG QVSLKVSNDG PTLIGANASF SIALNFPGSQ KVLDPGQVIW VNNTIINGSQ VWGGQPVYPQ ETDDACIFPD GGPCPSGSWS QKRSEFVYVWK TWGQYWQVLG GPVSGLSIGT GRAMLGTHTM EVTVYHRRGS RSYVPLAHSS SAFTITDQVP FSVSVSQLRA LDGGNKHFLR NQPLTFALQL HDPSGYLAEA DLSYTWDFGD SSGTLISRAL WTHTYLEPG PVTAQVVLQA AIPLTS
Isotype:	IgG
Cross-Reactivity:	Human, Mouse, Rat
Characteristics:	Polyclonal Antibodies

Product Details

Purification: Affinity purification

Target Details

Target: Melanoma gp100 (PMEL)

Alternative Name: PMEL ([PMEL Products](#))

Background: This gene encodes a melanocyte-specific type I transmembrane glycoprotein. The encoded protein is enriched in melanosomes, which are the melanin-producing organelles in melanocytes, and plays an essential role in the structural organization of premelanosomes. This protein is involved in generating internal matrix fibers that define the transition from Stage I to Stage II melanosomes. This protein undergoes a complex pattern of posttranslational processing and modification that is essential to the proper functioning of the protein. A secreted form of this protein that is released by proteolytic ectodomain shedding may be used as a melanoma-specific serum marker. Alternate splicing results in multiple transcript variants.,PMEL,D12S53E,ME20,ME20-M,ME20M,P1,P100,PMEL17,SI,SIL,SILV,gp100,Cancer,Tumor immunology,Tumor-associated antigens,Signal Transduction,Endocrine & Metabolism,Amino acid metabolism,Immunology & Inflammation,PMEL

Molecular Weight: 60kDa/66kDa/70kDa

Gene ID: 6490

UniProt: [P40967](#)

Application Details

Application Notes: WB,1:500 - 1:2000,IF,1:50 - 1:200

Restrictions: For Research Use only

Handling

Format: Liquid

Buffer: PBS with 0.02 % sodium azide,50 % glycerol, pH 7.3.

Preservative: Sodium azide

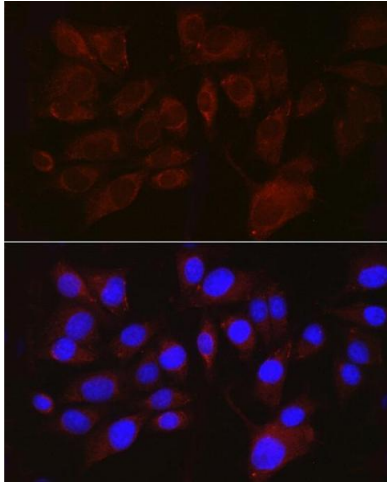
Precaution of Use: This product contains Sodium azide: a POISONOUS AND HAZARDOUS SUBSTANCE which should be handled by trained staff only.

Handling

Storage: -20 °C

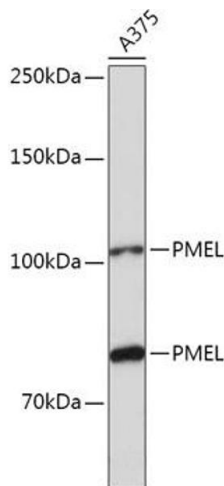
Storage Comment: Store at -20°C. Avoid freeze / thaw cycles.

Images



Immunofluorescence

Image 1. Immunofluorescence analysis of cells using PMEL Rabbit pAb (ABIN7269510) at dilution of 1:100 (40x lens). Blue: DAPI for nuclear staining.



Western Blotting

Image 2. Western blot analysis of extracts of cells, using PMEL antibody (ABIN7269510) at 1:1000 dilution. Secondary antibody: HRP Goat Anti-Rabbit IgG (H+L) (ABIN1684268 and ABIN3020597) at 1:10000 dilution. Lysates/proteins: 25 µg per lane. Blocking buffer: 3% nonfat dry milk in TBST. Detection: ECL Basic Kit (RM00020). Exposure time: 3 min.