



[Go to Product page](#)

Datasheet for ABIN7269528
anti-POP5 antibody (AA 50-150)

1 Image

Overview

Quantity:	100 µL
Target:	POP5
Binding Specificity:	AA 50-150
Reactivity:	Human
Host:	Rabbit
Clonality:	Polyclonal
Conjugate:	This POP5 antibody is un-conjugated
Application:	Western Blotting (WB)

Product Details

Purpose:	POP5 Rabbit pAb
Immunogen:	A synthetic peptide corresponding to a sequence within amino acids 50-150 of human POP5 (NP_057002.2).
Sequence:	SIGFAVRYLN AYTGIVLLRC RKEFYQLVWS ALPFITYLEN KGHRYPCCFFN TLHVGGTIRT CQKFLIQYNR RQLLILLQNC TDEGEREAIQ KSVTRSCLE E
Isotype:	IgG
Cross-Reactivity:	Human, Rat
Characteristics:	Polyclonal Antibodies
Purification:	Affinity purification

Target Details

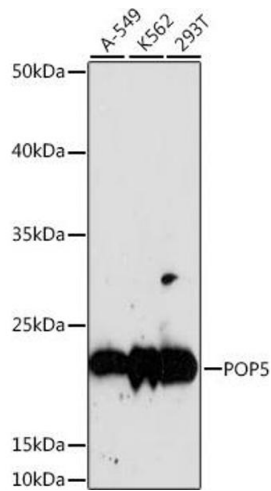
Target:	POP5
Alternative Name:	POP5 (POP5 Products)
Background:	Component of ribonuclease P, a protein complex that generates mature tRNA molecules by cleaving their 5'-ends. Also a component of the MRP ribonuclease complex, which cleaves pre-rRNA sequences.,POP5,HSPC004,RPP2,RPP20,hPop5,Epigenetics & Nuclear Signaling,Endocrine & Metabolism,Mitochondrial metabolism,POP5
Molecular Weight:	12kDa/18kDa
Gene ID:	51367
UniProt:	Q969H6

Application Details

Application Notes:	WB,1:500 - 1:2000
Restrictions:	For Research Use only

Handling

Format:	Liquid
Buffer:	PBS with 0.02 % sodium azide,50 % glycerol, pH 7.3.
Preservative:	Sodium azide
Precaution of Use:	This product contains Sodium azide: a POISONOUS AND HAZARDOUS SUBSTANCE which should be handled by trained staff only.
Storage:	-20 °C
Storage Comment:	Store at -20°C. Avoid freeze / thaw cycles.



Western Blotting

Image 1. Western blot analysis of extracts of various cell lines, using POP5 antibody (ABIN7269528) at 1:1000 dilution. Secondary antibody: HRP Goat Anti-Rabbit IgG (H+L) (ABIN1684268 and ABIN3020597) at 1:10000 dilution. Lysates/proteins: 25 µg per lane. Blocking buffer: 3 % nonfat dry milk in TBST. Detection: ECL Basic Kit (RM00020). Exposure time: 60s.