

Datasheet for ABIN7269533

anti-Progesterone Receptor antibody

7 Images

[Go to Product page](#)

Overview

Quantity:	100 µL
Target:	Progesterone Receptor (PGR)
Reactivity:	Human
Host:	Rabbit
Clonality:	Monoclonal
Conjugate:	This Progesterone Receptor antibody is un-conjugated
Application:	Western Blotting (WB), Immunohistochemistry (IHC)

Product Details

Purpose:	Progesterone Receptor Rabbit mAb
Immunogen:	A synthesized peptide derived from human Progesterone Receptor .
Isotype:	IgG
Cross-Reactivity:	Human
Characteristics:	Monoclonal Antibodies
Purification:	Affinity purification

Target Details

Target:	Progesterone Receptor (PGR)
Alternative Name:	PGR (PGR Products)
Background:	This gene encodes a member of the steroid receptor superfamily. The encoded protein

Target Details

mediates the physiological effects of progesterone, which plays a central role in reproductive events associated with the establishment and maintenance of pregnancy. This gene uses two distinct promoters and translation start sites in the first exon to produce several transcript variants, both protein coding and non-protein coding. Two of the isoforms (A and B) are identical except for an additional 165 amino acids found in the N-terminus of isoform B and mediate their own response genes and physiologic effects with little overlap. [provided by RefSeq, Sep 2015],NR3C3,PR,PGR,Cancer,Endocrine & Metabolism,Epigenetics & Nuclear Signaling,Neuroscience,Nuclear Receptor Signaling,Nuclear Receptor Signaling_Nuclear hormone receptors,Protein phosphorylation,Signal Transduction,Transcription Factors,Tumor biomarkers,PGR

Molecular Weight: 99kDa

Gene ID: 5241

UniProt: [P06401](#)

Pathways: [Nuclear Receptor Transcription Pathway](#), [Intracellular Steroid Hormone Receptor Signaling Pathway](#), [Steroid Hormone Mediated Signaling Pathway](#), [Smooth Muscle Cell Migration](#)

Application Details

Application Notes: WB,1:500 - 1:2000,IHC,1:50 - 1:200

Restrictions: For Research Use only

Handling

Format: Liquid

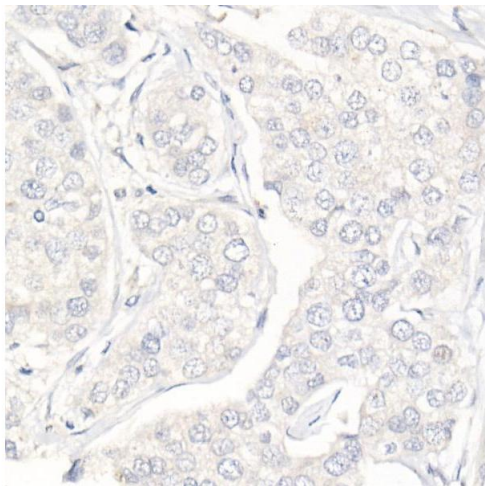
Buffer: PBS with 0.02 % sodium azide,0.05 % BSA,50 % glycerol, pH 7.3.

Preservative: Sodium azide

Precaution of Use: This product contains Sodium azide: a POISONOUS AND HAZARDOUS SUBSTANCE which should be handled by trained staff only.

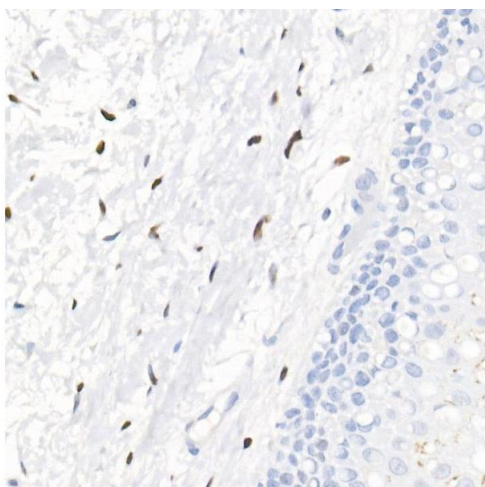
Storage: -20 °C

Storage Comment: Store at -20°C. Avoid freeze / thaw cycles.



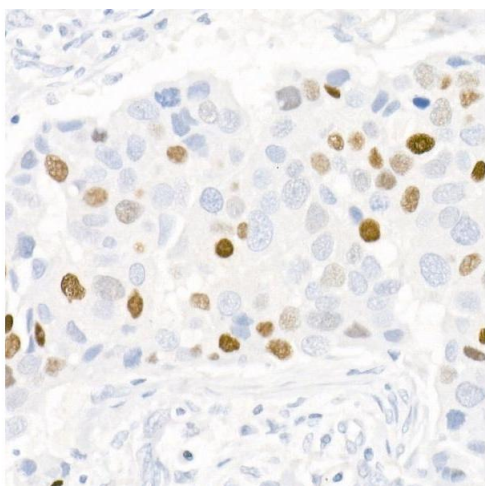
Immunohistochemistry

Image 1. Immunohistochemistry of paraffin-embedded Human triple negative breast cancer (negative control sample) using Progesterone Receptor Rabbit mAb (ABIN7269533) at dilution of 1:100 (40x lens). Perform high pressure antigen retrieval with 10 mM citrate buffer pH 6.0 before commencing with IHC staining protocol.



Immunohistochemistry

Image 2. Immunohistochemistry of paraffin-embedded human cervix using Progesterone Receptor Rabbit mAb (ABIN7269533) at dilution of 1:100 (40x lens). Perform high pressure antigen retrieval with 10 mM citrate buffer pH 6.0 before commencing with IHC staining protocol.



Immunohistochemistry

Image 3. Immunohistochemistry of paraffin-embedded human breast cancer using Progesterone Receptor Rabbit mAb (ABIN7269533) at dilution of 1:100 (40x lens). Perform high pressure antigen retrieval with 10 mM citrate buffer pH 6.0 before commencing with IHC staining protocol.

Please check the [product details page](#) for more images. Overall 7 images are available for ABIN7269533.