

Datasheet for ABIN7269546
anti-Prokineticin 1 antibody[Go to Product page](#)

3 Images

Overview

Quantity:	100 µL
Target:	Prokineticin 1 (Prok1)
Reactivity:	Human
Host:	Rabbit
Clonality:	Monoclonal
Conjugate:	This Prokineticin 1 antibody is un-conjugated
Application:	Western Blotting (WB), Immunofluorescence (IF)

Product Details

Purpose:	PROK1 Rabbit mAb
Immunogen:	Recombinant protein of human PROK1 .
Isotype:	IgG
Cross-Reactivity:	Human, Mouse, Rat
Characteristics:	Monoclonal Antibodies
Purification:	Affinity purification

Target Details

Target:	Prokineticin 1 (Prok1)
Alternative Name:	PROK1 (Prok1 Products)
Background:	The protein encoded by this gene induces proliferation, migration, and fenestration (the

Target Details

formation of membrane discontinuities) in capillary endothelial cells derived from endocrine glands. It has little or no effect on a variety of other endothelial and non-endothelial cell types. Its expression is restricted to the steroidogenic glands (ovary, testis, adrenal, and placenta), is induced by hypoxia, and often complementary to the expression of vascular endothelial growth factor (VEGF), suggesting that these molecules function in a coordinated manner. [provided by RefSeq, Sep 2011],PROK1

Molecular Weight: 14kDa

Gene ID: 84432

UniProt: [P58294](#)

Application Details

Application Notes: WB,1:500 - 1:2000,IF,1:50 - 1:200

Restrictions: For Research Use only

Handling

Format: Liquid

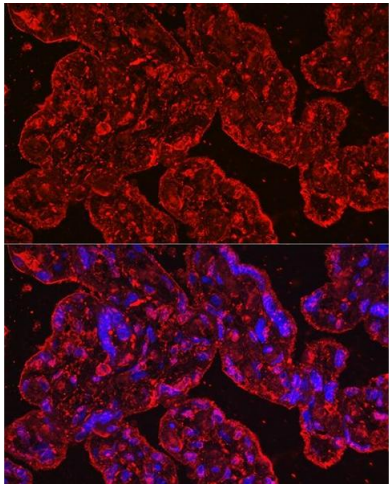
Buffer: PBS with 0.02 % sodium azide,0.05 % BSA,50 % glycerol, pH 7.3.

Preservative: Sodium azide

Precaution of Use: This product contains Sodium azide: a POISONOUS AND HAZARDOUS SUBSTANCE which should be handled by trained staff only.

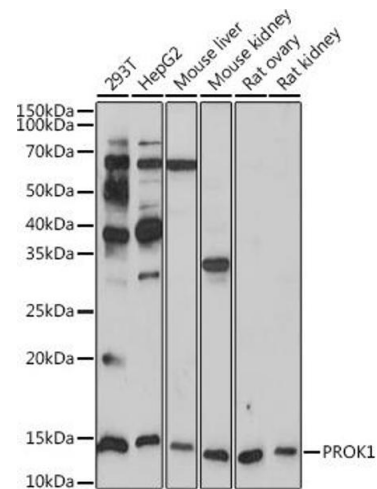
Storage: -20 °C

Storage Comment: Store at -20°C. Avoid freeze / thaw cycles.



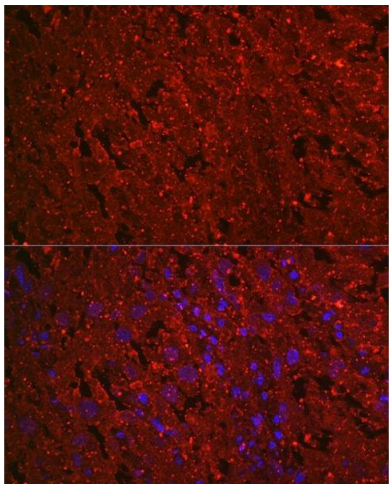
Immunofluorescence

Image 1. Immunofluorescence analysis of human placenta cells using PROK1 Rabbit mAb (ABIN7269546) at dilution of 1:100 (40x lens). Blue: DAPI for nuclear staining.



Western Blotting

Image 2. Western blot analysis of extracts of various cell lines, using PROK1 antibody (ABIN7269546) at 1:1000 dilution. Secondary antibody: HRP Goat Anti-Rabbit IgG (H+L) (ABIN1684268 and ABIN3020597) at 1:10000 dilution. Lysates/proteins: 25 µg per lane. Blocking buffer: 3 % nonfat dry milk in TBST. Detection: ECL Basic Kit (RM00020). Exposure time: 180s.



Immunofluorescence

Image 3. Immunofluorescence analysis of rat placenta cells using PROK1 Rabbit mAb (ABIN7269546) at dilution of 1:100 (40x lens). Blue: DAPI for nuclear staining.