



[Go to Product page](#)

Datasheet for ABIN7269553
anti-Proline Rich 12 antibody

1 Image

Overview

Quantity:	100 µL
Target:	Proline Rich 12 (PRR12)
Reactivity:	Human
Host:	Rabbit
Clonality:	Polyclonal
Conjugate:	This Proline Rich 12 antibody is un-conjugated
Application:	Western Blotting (WB)

Product Details

Purpose:	PRR12 Rabbit pAb
Immunogen:	Recombinant protein of human PRR12.
Isotype:	IgG
Cross-Reactivity:	Human, Mouse, Rat
Characteristics:	Polyclonal Antibodies
Purification:	Affinity purification

Target Details

Target:	Proline Rich 12 (PRR12)
Alternative Name:	PRR12 (PRR12 Products)
Background:	This gene encodes a proline-rich protein that contains two A-T hook DNA binding domains. A

Target Details

chromosomal translocation and gene fusion between this gene and zinc finger, MIZ-type containing 1 (Gene ID: 57178) may underlie intellectual disability and neuropsychiatric problems in a human patient. Enriched expression of this gene in embryonic mouse brain suggests that this gene may play a role in nervous system development.,KIAA1205,PRR12

Molecular Weight: 211kDa

Gene ID: 57479

UniProt: [Q9ULL5](#)

Application Details

Application Notes: WB,1:500 - 1:2000

Restrictions: For Research Use only

Handling

Format: Liquid

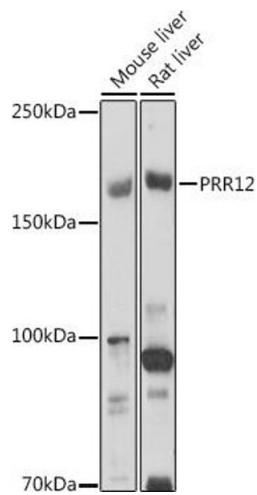
Buffer: PBS with 0.02 % sodium azide,50 % glycerol, pH 7.3.

Preservative: Sodium azide

Precaution of Use: This product contains Sodium azide: a POISONOUS AND HAZARDOUS SUBSTANCE which should be handled by trained staff only.

Storage: -20 °C

Storage Comment: Store at -20°C. Avoid freeze / thaw cycles.



Western Blotting

Image 1. Western blot analysis of extracts of various cell lines, using PRR12 antibody (ABIN7269553) at 1:1000 dilution. Secondary antibody: HRP Goat Anti-Rabbit IgG (H+L) (ABIN1684268 and ABIN3020597) at 1:10000 dilution. Lysates/proteins: 25 µg per lane. Blocking buffer: 3 % nonfat dry milk in TBST. Detection: ECL Basic Kit (RM00020). Exposure time: 180s.