



Datasheet for ABIN7269554 **anti-PRR16 antibody (AA 50-150)**



[Go to Product page](#)

1 Image

Overview

Quantity:	100 µL
Target:	PRR16
Binding Specificity:	AA 50-150
Reactivity:	Human
Host:	Rabbit
Clonality:	Polyclonal
Conjugate:	This PRR16 antibody is un-conjugated
Application:	Western Blotting (WB)

Product Details

Purpose:	PRR16 Rabbit pAb
Immunogen:	A synthetic peptide corresponding to a sequence within amino acids 50-150 of human PRR16 (NP_001295016.1).
Sequence:	PNPPPPPRRL TPVKCEDPKR VVPTANPVKT NGTLLRNGGL PGGPNKIPNG DICCPNSNL DKAPVQLLMH RPEKDRCPQA GPRERVRFNE KVQYHGYPD C
Isotype:	IgG
Cross-Reactivity:	Mouse
Characteristics:	Polyclonal Antibodies
Purification:	Affinity purification

Target Details

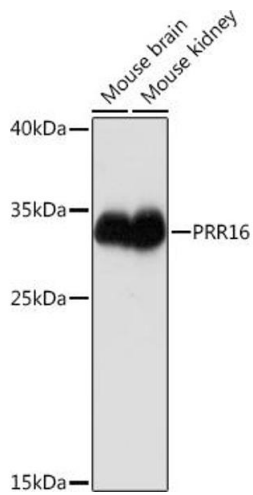
Target:	PRR16
Alternative Name:	PRR16 (PRR16 Products)
Background:	Regulator of cell size that promotes cell size increase independently of mTOR and Hippo signaling pathways. Acts by stimulating the translation of specific mRNAs, including those encoding proteins affecting mitochondrial functions. Increases mitochondrial mass and respiration.,PRR16,DSC54,LARGEN,Cell Biology & Developmental Biology,PRR16
Gene ID:	51334
UniProt:	Q569H4

Application Details

Application Notes:	WB,1:500 - 1:2000
Restrictions:	For Research Use only

Handling

Format:	Liquid
Buffer:	PBS with 0.02 % sodium azide,50 % glycerol, pH 7.3.
Preservative:	Sodium azide
Precaution of Use:	This product contains Sodium azide: a POISONOUS AND HAZARDOUS SUBSTANCE which should be handled by trained staff only.
Storage:	-20 °C
Storage Comment:	Store at -20°C. Avoid freeze / thaw cycles.



Western Blotting

Image 1. Western blot analysis of extracts of various cell lines, using PRR16 Rabbit pAb (ABIN7269554) at 1:1000 dilution. Secondary antibody: HRP Goat Anti-Rabbit IgG (H+L) (ABIN1684268 and ABIN3020597) at 1:10000 dilution. Lysates/proteins: 25 µg per lane. Blocking buffer: 3 % nonfat dry milk in TBST. Detection: ECL Basic Kit (RM00020). Exposure time: 1s.