



[Go to Product page](#)

Datasheet for ABIN7269559
anti-PRRT2 antibody (AA 20-130)

1 Image

Overview

Quantity:	100 µL
Target:	PRRT2
Binding Specificity:	AA 20-130
Reactivity:	Human
Host:	Rabbit
Clonality:	Polyclonal
Conjugate:	This PRRT2 antibody is un-conjugated
Application:	Western Blotting (WB)

Product Details

Purpose:	PRRT2 Rabbit pAb
Immunogen:	Recombinant fusion protein containing a sequence corresponding to amino acids 20-130 of human PRRT2 (NP_660282.2).
Sequence:	VPGEGPGHSE AETGPPQVLA GVPDQPEAPQ PGPNTTAAPV DSGPKAGLAP ETTETPAGAS ETAQATDLSL SPGGESKANC SPEDPCQETV SKPEVSKEAT ADQGSRLISA A
Isotype:	IgG
Cross-Reactivity:	Human, Mouse
Characteristics:	Polyclonal Antibodies
Purification:	Affinity purification

Target Details

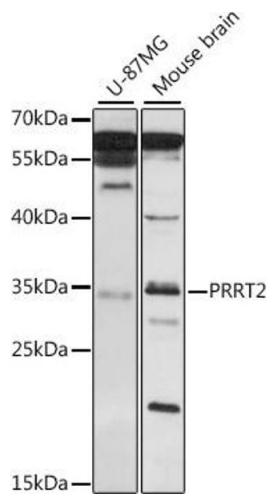
Target:	PRRT2
Alternative Name:	PRRT2 (PRRT2 Products)
Background:	<p>This gene encodes a transmembrane protein containing a proline-rich domain in its N-terminal half. Studies in mice suggest that it is predominantly expressed in brain and spinal cord in embryonic and postnatal stages. Mutations in this gene are associated with episodic kinesigenic dyskinesia-1. Alternatively spliced transcript variants encoding different isoforms have been found for this</p> <p>gene.,PRRT2,BFIC2,BFIS2,DSPB3,DYT10,EKD1,FICCA,ICCA,IFITMD1,PKC,Cell Biology & Developmental Biology,PRRT2</p>
Molecular Weight:	30kDa/34kDa/40kDa
Gene ID:	112476
UniProt:	Q7Z6L0

Application Details

Application Notes:	WB,1:500 - 1:2000
Restrictions:	For Research Use only

Handling

Format:	Liquid
Buffer:	PBS with 0.02 % sodium azide,50 % glycerol, pH 7.3.
Preservative:	Sodium azide
Precaution of Use:	This product contains Sodium azide: a POISONOUS AND HAZARDOUS SUBSTANCE which should be handled by trained staff only.
Storage:	-20 °C
Storage Comment:	Store at -20°C. Avoid freeze / thaw cycles.



Western Blotting

Image 1. Western blot analysis of extracts of various cell lines, using PRRT2 antibody (ABIN7269559) at 1:1000 dilution. Secondary antibody: HRP Goat Anti-Rabbit IgG (H+L) (ABIN1684268 and ABIN3020597) at 1:10000 dilution. Lysates/proteins: 25 µg per lane. Blocking buffer: 3 % nonfat dry milk in TBST. Detection: ECL Basic Kit (RM00020). Exposure time: 5s.