



[Go to Product page](#)

Datasheet for ABIN7269560

anti-P4HB antibody

3 Images

Overview

Quantity:	100 µL
Target:	P4HB
Reactivity:	Human
Host:	Rabbit
Clonality:	Monoclonal
Conjugate:	This P4HB antibody is un-conjugated
Application:	Western Blotting (WB), Immunohistochemistry (IHC)

Product Details

Purpose:	P4HB Rabbit mAb
Immunogen:	Recombinant protein of human P4HB.
Isotype:	IgG
Cross-Reactivity:	Human, Mouse, Rat
Characteristics:	Monoclonal Antibodies
Purification:	Affinity purification

Target Details

Target:	P4HB
Alternative Name:	P4HB (P4HB Products)
Background:	This gene encodes the beta subunit of prolyl 4-hydroxylase, a highly abundant multifunctional

Target Details

enzyme that belongs to the protein disulfide isomerase family. When present as a tetramer consisting of two alpha and two beta subunits, this enzyme is involved in hydroxylation of prolyl residues in procollagen. This enzyme is also a disulfide isomerase containing two thioredoxin domains that catalyze the formation, breakage and rearrangement of disulfide bonds. Other known functions include its ability to act as a chaperone that inhibits aggregation of misfolded proteins in a concentration-dependent manner, its ability to bind thyroid hormone, its role in both the influx and efflux of S-nitrosothiol-bound nitric oxide, and its function as a subunit of the microsomal triglyceride transfer protein complex.,P4HB, CLCRP1, DSI, ERBA2L, GIT, P4Hbeta, PDI, PDIA1, PHDB, PO4DB, PO4HB, PROHB, protein disulfide-isomerase,Epigenetics & Nuclear Signaling,RNA Binding,Cancer,Signal Transduction,Cell Biology & Developmental Biology,Cytoskeleton,Extracellular Matrix,Collagen,Endocrine & Metabolism,Lipid Metabolism,P4HB

Molecular Weight: 57kDa

Gene ID: 5034

UniProt: [P07237](#)

Pathways: [Maintenance of Protein Location](#), [Cell RedoxHomeostasis](#), [Lipid Metabolism](#)

Application Details

Application Notes: WB,1:500 - 1:2000,IHC,1:50 - 1:200

Restrictions: For Research Use only

Handling

Format: Liquid

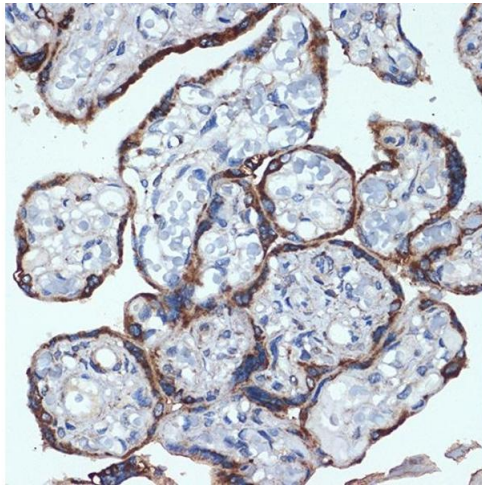
Buffer: PBS with 0.02 % sodium azide,0.05 % BSA,50 % glycerol, pH 7.3.

Preservative: Sodium azide

Precaution of Use: This product contains Sodium azide: a POISONOUS AND HAZARDOUS SUBSTANCE which should be handled by trained staff only.

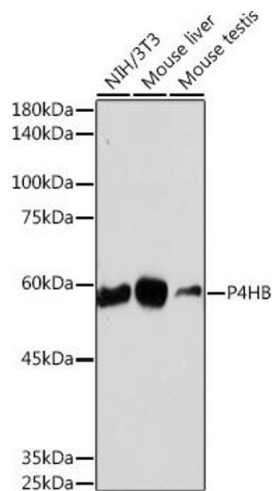
Storage: -20 °C

Storage Comment: Store at -20°C. Avoid freeze / thaw cycles.



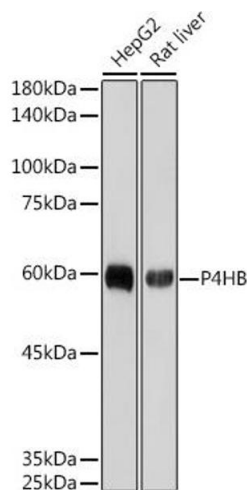
Immunohistochemistry

Image 1. Immunohistochemistry of paraffin-embedded human placenta using P4HB Rabbit mAb (ABIN7269560) at dilution of 1:100 (40x lens). Perform microwave antigen retrieval with 10 mM Tris/EDTA buffer pH 9.0 before commencing with IHC staining protocol.



Western Blotting

Image 2. Western blot analysis of extracts of various cell lines, using P4HB antibody (ABIN7269560) at 1:1000 dilution. Secondary antibody: HRP Goat Anti-Rabbit IgG (H+L) (ABIN1684268 and ABIN3020597) at 1:10000 dilution. Lysates/proteins: 25 µg per lane. Blocking buffer: 3 % nonfat dry milk in TBST. Detection: ECL Basic Kit (RM00020). Exposure time: 180s.



Western Blotting

Image 3. Western blot analysis of extracts of various cell lines, using P4HB antibody (ABIN7269560) at 1:1000 dilution. Secondary antibody: HRP Goat Anti-Rabbit IgG (H+L) (ABIN1684268 and ABIN3020597) at 1:10000 dilution. Lysates/proteins: 25 µg per lane. Blocking buffer: 3 % nonfat dry milk in TBST. Detection: ECL Basic Kit (RM00020). Exposure time: 3s.