



[Go to Product page](#)

Datasheet for ABIN7269571  
**anti-PROX1 antibody**

2 Images

### Overview

Quantity:	100 µL
Target:	PROX1
Reactivity:	Human
Host:	Rabbit
Clonality:	Monoclonal
Conjugate:	This PROX1 antibody is un-conjugated
Application:	Western Blotting (WB), Immunohistochemistry (IHC)

### Product Details

Purpose:	PROX1 Rabbit mAb
Immunogen:	A synthesized peptide derived from human PROX1
Isotype:	IgG
Cross-Reactivity:	Human, Mouse, Rat
Characteristics:	Monoclonal Antibodies
Purification:	Affinity purification

### Target Details

Target:	PROX1
Alternative Name:	PROX1 ( <a href="#">PROX1 Products</a> )
Background:	The protein encoded by this gene is a member of the homeobox transcription factor family.

## Target Details

---

Members of this family contain a homeobox domain that consists of a 60-amino acid helix-turn-helix structure that binds DNA and RNA. The protein encoded by this gene is conserved across vertebrates and may play an essential role during development. Altered levels of this protein have been reported in cancers of different organs, such as colon, brain, blood, breast, pancreas, liver and esophagus. Alternative splicing results in multiple transcript variants. [provided by RefSeq, Jul 2012],PROX1, prospero homeobox 1,Cardiovascular,Epigenetics & Nuclear Signaling,Heart,Heart\_Cardiogenesis,Neuroscience,Signal Transduction,Transcription Factors,PROX1

---

Molecular Weight: 95kDa

---

Gene ID: 5629

---

UniProt: [Q92786](#)

---

Pathways: [Stem Cell Maintenance](#), [Regulation of Muscle Cell Differentiation](#)

## Application Details

---

---

Application Notes: WB,1:500 - 1:2000,IHC,1:50 - 1:200

---

Restrictions: For Research Use only

## Handling

---

---

Format: Liquid

---

Buffer: PBS with 0.02 % sodium azide,0.05 % BSA,50 % glycerol, pH 7.3.

---

Preservative: Sodium azide

---

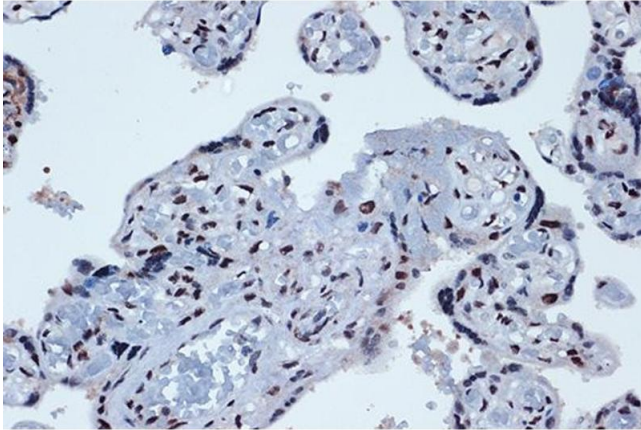
Precaution of Use: This product contains Sodium azide: a POISONOUS AND HAZARDOUS SUBSTANCE which should be handled by trained staff only.

---

Storage: -20 °C

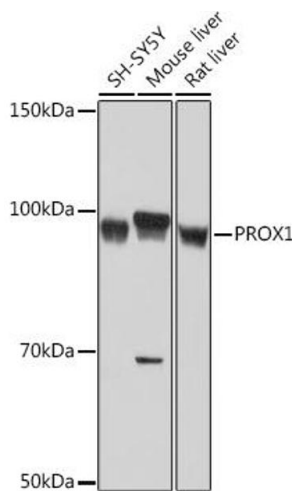
---

Storage Comment: Store at -20°C. Avoid freeze / thaw cycles.



### Immunohistochemistry

**Image 1.** Immunohistochemistry of paraffin-embedded human placenta using PROX1 Rabbit mAb (ABIN7269571) at dilution of 1:100 (40x lens). Perform microwave antigen retrieval with 10 mM Tris/EDTA buffer pH 9.0 before commencing with IHC staining protocol.



### Western Blotting

**Image 2.** Western blot analysis of extracts of various cell lines, using PROX1 Rabbit mAb (ABIN7269571) at 1:1000 dilution. Secondary antibody: HRP Goat Anti-Rabbit IgG (H+L) (ABIN1684268 and ABIN3020597) at 1:10000 dilution. Lysates/proteins: 25 µg per lane. Blocking buffer: 3 % nonfat dry milk in TBST. Detection: ECL Basic Kit (RM00020). Exposure time: 1 min.