



Datasheet for ABIN7269572
anti-PTGER2 antibody



[Go to Product page](#)

5 Images

Overview

Quantity:	100 µL
Target:	PTGER2
Reactivity:	Human
Host:	Rabbit
Clonality:	Monoclonal
Conjugate:	This PTGER2 antibody is un-conjugated
Application:	Western Blotting (WB), Immunohistochemistry (IHC), Immunofluorescence (IF)

Product Details

Purpose:	PGE receptor EP2 (PTGER2) Rabbit mAb
Immunogen:	A synthesized peptide derived from human PGE Receptor EP2 (PGE Receptor EP2 (PGE receptor EP2 (PTGER2)))
Isotype:	IgG
Cross-Reactivity:	Human, Mouse, Rat
Characteristics:	Monoclonal Antibodies
Purification:	Affinity purification

Target Details

Target:	PTGER2
Alternative Name:	PTGER2 (PTGER2 Products)

Target Details

Background: This gene encodes a receptor for prostaglandin E2, a metabolite of arachidonic acid which has different biologic activities in a wide range of tissues. Mutations in this gene are associated with aspirin-induced susceptibility to asthma. [provided by RefSeq, Oct 2009],EP2,Cancer,Endocrine & Metabolism,Lipid Metabolism,Signal Transduction,PTGER2

Molecular Weight: 52kDa

Gene ID: 5732

UniProt: [P43116](#)

Application Details

Application Notes: WB,1:500 - 1:2000,IHC,1:50 - 1:200,IF,1:50 - 1:200

Restrictions: For Research Use only

Handling

Format: Liquid

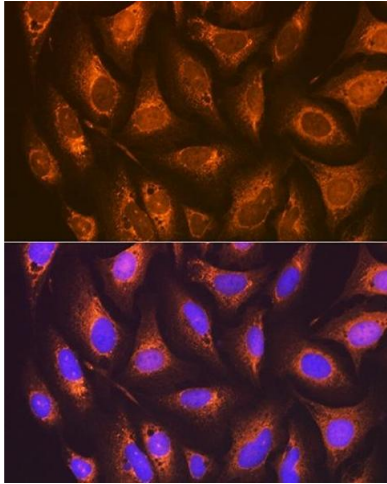
Buffer: PBS with 0.02 % sodium azide,0.05 % BSA,50 % glycerol, pH 7.3.

Preservative: Sodium azide

Precaution of Use: This product contains Sodium azide: a POISONOUS AND HAZARDOUS SUBSTANCE which should be handled by trained staff only.

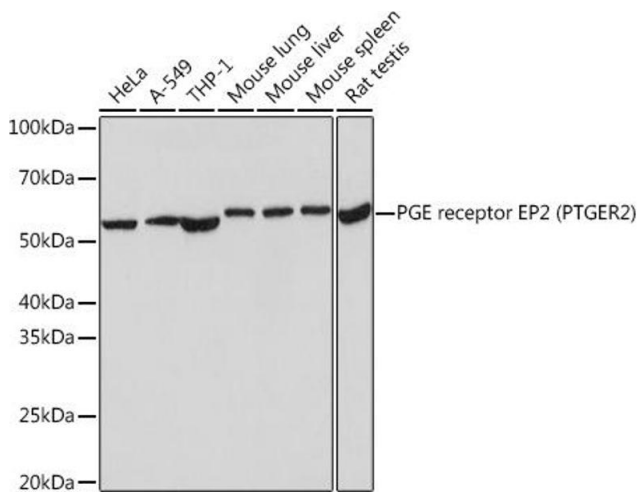
Storage: -20 °C

Storage Comment: Store at -20°C. Avoid freeze / thaw cycles.



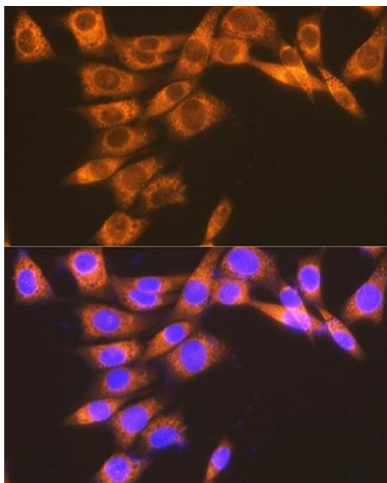
Immunofluorescence

Image 1. Immunofluorescence analysis of U-2 OS cells using PGE Receptor EP2 (PGE Receptor EP2 (PGE receptor EP2 (PTGER2))) Rabbit mAb (ABIN7269572) at dilution of 1:100 (40x lens). Blue: DAPI for nuclear staining.



Western Blotting

Image 2. Western blot analysis of extracts of various cell lines, using PGE Receptor EP2 (PGE Receptor EP2 (PGE receptor EP2 (PTGER2))) Rabbit mAb (ABIN7269572) at 1:1000 dilution. Secondary antibody: HRP Goat Anti-Rabbit IgG (H+L) (ABIN1684268 and ABIN3020597) at 1:10000 dilution. Lysates/proteins: 25 µg per lane. Blocking buffer: 3 % nonfat dry milk in TBST. Detection: ECL Basic Kit (RM00020). Exposure time: 3s.



Immunofluorescence

Image 3. Immunofluorescence analysis of NIH-3T3 cells using PGE Receptor EP2 (PGE Receptor EP2 (PGE receptor EP2 (PTGER2))) Rabbit mAb (ABIN7269572) at dilution of 1:100 (40x lens). Blue: DAPI for nuclear staining.

Please check the [product details page](#) for more images. Overall 5 images are available for ABIN7269572.