



[Go to Product page](#)

Datasheet for ABIN7269573

## anti-Prostaglandin E Synthase antibody

### 4 Images

#### Overview

Quantity:	100 µL
Target:	Prostaglandin E Synthase (PTGES)
Reactivity:	Human
Host:	Rabbit
Clonality:	Polyclonal
Conjugate:	This Prostaglandin E Synthase antibody is un-conjugated
Application:	Western Blotting (WB), Immunohistochemistry (IHC)

#### Product Details

Purpose:	PTGES Rabbit pAb
Immunogen:	A synthetic peptide of human PTGES.
Isotype:	IgG
Cross-Reactivity:	Human, Mouse, Rat
Characteristics:	Polyclonal Antibodies
Purification:	Affinity purification

#### Target Details

Target:	Prostaglandin E Synthase (PTGES)
Alternative Name:	PTGES ( <a href="#">PTGES Products</a> )
Background:	The protein encoded by this gene is a glutathione-dependent prostaglandin E synthase. The

## Target Details

---

expression of this gene has been shown to be induced by proinflammatory cytokine interleukin 1 beta (IL1B). Its expression can also be induced by tumor suppressor protein TP53, and may be involved in TP53 induced apoptosis. Knockout studies in mice suggest that this gene may contribute to the pathogenesis of collagen-induced arthritis and mediate acute pain during inflammatory responses.,PTGES, MGST-IV, MGST1-L1, MGST1L1, MPGES, PGES, PIG12, PP102, PP1294, TP53I12, mPGES-1, prostaglandin E synthase,Cell Intrinsic Innate Immunity Signaling Pathway,Immunology & Inflammation,Signal Transduction,PTGES

---

Molecular Weight: 17kDa

---

Gene ID: 9536

---

UniProt: [O14684](#)

## Application Details

---

---

Application Notes: WB,1:500 - 1:2000,IHC,1:50 - 1:200

---

Restrictions: For Research Use only

## Handling

---

---

Format: Liquid

---

Buffer: PBS with 0.02 % sodium azide,50 % glycerol, pH 7.3.

---

Preservative: Sodium azide

---

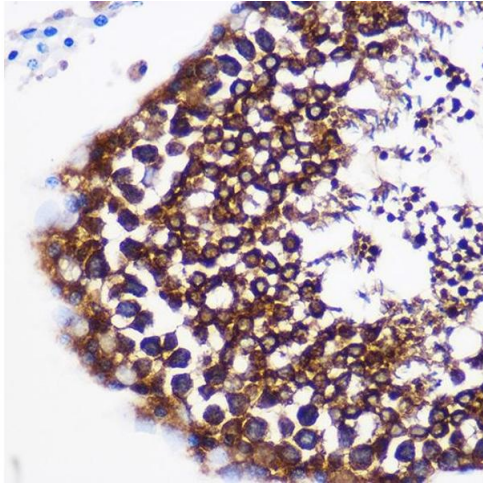
Precaution of Use: This product contains Sodium azide: a POISONOUS AND HAZARDOUS SUBSTANCE which should be handled by trained staff only.

---

Storage: -20 °C

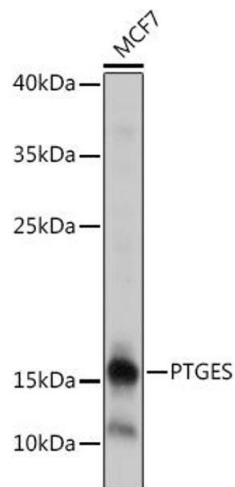
---

Storage Comment: Store at -20°C. Avoid freeze / thaw cycles.



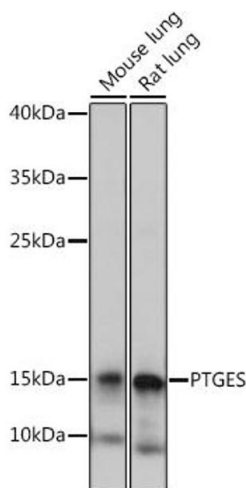
### Immunohistochemistry

**Image 1.** Immunohistochemistry of paraffin-embedded Rat testis using PTGES Rabbit pAb (ABIN7269573) at dilution of 1:100 (40x lens). Perform microwave antigen retrieval with 10 mM PBS buffer pH 7.2 before commencing with IHC staining protocol.



### Western Blotting

**Image 2.** Western blot analysis of extracts of MCF7 cells, using PTGES antibody (ABIN7269573) at 1:1000 dilution. Secondary antibody: HRP Goat Anti-Rabbit IgG (H+L) (ABIN1684268 and ABIN3020597) at 1:10000 dilution. Lysates/proteins: 25 µg per lane. Blocking buffer: 3 % nonfat dry milk in TBST. Detection: ECL Basic Kit (RM00020). Exposure time: 1s.



### Western Blotting

**Image 3.** Western blot analysis of extracts of various cell lines, using PTGES antibody (ABIN7269573) at 1:1000 dilution. Secondary antibody: HRP Goat Anti-Rabbit IgG (H+L) (ABIN1684268 and ABIN3020597) at 1:10000 dilution. Lysates/proteins: 25 µg per lane. Blocking buffer: 3 % nonfat dry milk in TBST. Detection: ECL Basic Kit (RM00020). Exposure time: 10s.

Please check the [product details page](#) for more images. Overall 4 images are available for ABIN7269573.