

Datasheet for ABIN7269574
anti-PTGFR antibody (AA 50-150)[Go to Product page](#)

1 Image

Overview

Quantity:	100 µL
Target:	PTGFR
Binding Specificity:	AA 50-150
Reactivity:	Human
Host:	Rabbit
Clonality:	Polyclonal
Conjugate:	This PTGFR antibody is un-conjugated
Application:	Western Blotting (WB)

Product Details

Purpose:	PTGFR Rabbit pAb
Immunogen:	A synthetic peptide corresponding to a sequence within amino acids 50-150 of human PTGFR (NP_000950.1).
Sequence:	ILMKAYQRFR QKSKASFLLL ASGLVITDFF GHILINGAIAV FVYASDKEWI RFDQSNVLCSS IFGICMVFSG LCPLLLGSVM AIERCIGVTK PIFHSTKITS K
Isotype:	IgG
Cross-Reactivity:	Mouse, Rat
Characteristics:	Polyclonal Antibodies
Purification:	Affinity purification

Target Details

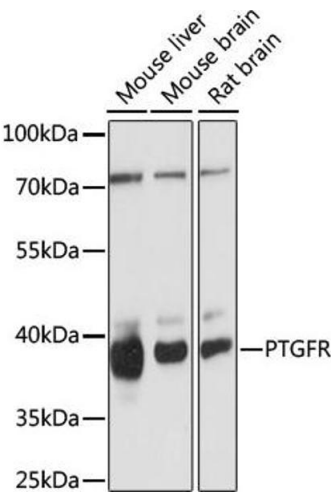
Target:	PTGFR
Alternative Name:	PTGFR (PTGFR Products)
Background:	<p>The protein encoded by this gene is member of the G-protein coupled receptor family. This protein is a receptor for prostaglandin F2-alpha (PGF2-alpha), which is known to be a potent luteolytic agent, and may also be involved in modulating intraocular pressure and smooth muscle contraction in uterus. Knockout studies in mice suggest that the interaction of PGF2-alpha with this receptor may initiate parturition in ovarian luteal cells and thus induce luteolysis.</p> <p>Two transcript variants encoding different isoforms have been found for this gene.,PTGFR,FP,Signal Transduction,G protein signaling,G-Protein-Coupled Receptors(GPCR),Endocrine & Metabolism,Neuroscience,Calcium Signaling,PTGFR</p>
Molecular Weight:	29kDa/30kDa/32kDa/33kDa/40kDa
Gene ID:	5737
UniProt:	P43088

Application Details

Application Notes:	WB,1:500 - 1:2000
Restrictions:	For Research Use only

Handling

Format:	Liquid
Buffer:	PBS with 0.02 % sodium azide,50 % glycerol, pH 7.3.
Preservative:	Sodium azide
Precaution of Use:	This product contains Sodium azide: a POISONOUS AND HAZARDOUS SUBSTANCE which should be handled by trained staff only.
Storage:	-20 °C
Storage Comment:	Store at -20°C. Avoid freeze / thaw cycles.



Western Blotting

Image 1. Western blot analysis of extracts of various cell lines, using PTGFR antibody (ABIN7269574) at 1:1000 dilution. Secondary antibody: HRP Goat Anti-Rabbit IgG (H+L) (ABIN1684268 and ABIN3020597) at 1:10000 dilution. Lysates/proteins: 25 µg per lane. Blocking buffer: 3 % nonfat dry milk in TBST. Detection: ECL Basic Kit (RM00020). Exposure time: 90s.