

Datasheet for ABIN7269587
anti-PSMD11 antibody (AA 253-422)[Go to Product page](#)

1 Image

Overview

Quantity:	100 µL
Target:	PSMD11
Binding Specificity:	AA 253-422
Reactivity:	Human
Host:	Rabbit
Clonality:	Polyclonal
Conjugate:	This PSMD11 antibody is un-conjugated
Application:	Western Blotting (WB), Immunohistochemistry (IHC), Immunofluorescence (IF)

Product Details

Purpose:	PSMD11 Rabbit pAb
Immunogen:	Recombinant fusion protein containing a sequence corresponding to amino acids 253-422 of human PSMD11 (NP_002806.2).
Sequence:	YMLLCKIMLN TPEDVQALVS GKLALRYAGR QTEALKCVAQ ASKNRSLADF EKALTDYRAE LRDDPIISTH LAKLYDNLE QNLIRVIEPF SRVQIEHISS LIKLSKADVE RKLSQMILDK KFHGILDQGE GVLIIFDEPP VDKTYEAALE TIQNMSKVVD SLYNKAKKLT
Isotype:	IgG
Cross-Reactivity:	Human, Mouse, Rat
Characteristics:	Polyclonal Antibodies
Purification:	Affinity purification

Target Details

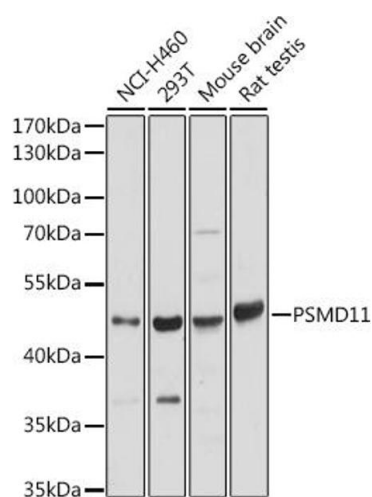
Target:	PSMD11
Alternative Name:	PSMD11 (PSMD11 Products)
Background:	<p>The 26S proteasome is a multicatalytic proteinase complex with a highly ordered structure composed of 2 complexes, a 20S core and a 19S regulator. The 20S core is composed of 4 rings of 28 non-identical subunits, 2 rings are composed of 7 alpha subunits and 2 rings are composed of 7 beta subunits. The 19S regulator is composed of a base, which contains 6 ATPase subunits and 2 non-ATPase subunits, and a lid, which contains up to 10 non-ATPase subunits. Proteasomes are distributed throughout eukaryotic cells at a high concentration and cleave peptides in an ATP/ubiquitin-dependent process in a non-lysosomal pathway. This gene encodes a member of the proteasome subunit S9 family that functions as a non-ATPase subunit of the 19S regulator and is phosphorylated by AMP-activated protein kinase. Alternatively spliced transcript variants have been observed for this gene.,PSMD11,Rpn6,S9,p44.5,Cell Biology & Developmental Biology,Ubiquitin,PSMD11</p>
Molecular Weight:	47kDa
Gene ID:	5717
UniProt:	O00231
Pathways:	Mitotic G1-G1/S Phases , DNA Replication , Synthesis of DNA , Ubiquitin Proteasome Pathway

Application Details

Application Notes:	WB,1:200 - 1:2000,IHC,1:50 - 1:200,IF,1:50 - 1:200
Restrictions:	For Research Use only

Handling

Format:	Liquid
Buffer:	PBS with 0.02 % sodium azide,50 % glycerol, pH 7.3.
Preservative:	Sodium azide
Precaution of Use:	This product contains Sodium azide: a POISONOUS AND HAZARDOUS SUBSTANCE which should be handled by trained staff only.
Storage:	-20 °C
Storage Comment:	Store at -20°C. Avoid freeze / thaw cycles.



Western Blotting

Image 1. Western blot analysis of extracts of various cell lines, using PSMD11 antibody (ABIN7269587) at 1:2000 dilution. Secondary antibody: HRP Goat Anti-Rabbit IgG (H+L) (ABIN1684268 and ABIN3020597) at 1:10000 dilution. Lysates/proteins: 25 µg per lane. Blocking buffer: 3 % nonfat dry milk in TBST. Detection: ECL Basic Kit (RM00020). Exposure time: 5s.