

Datasheet for ABIN7269594
anti-PSMB7 antibody (AA 44-200)

3 Images

[Go to Product page](#)

Overview

Quantity:	100 µL
Target:	PSMB7
Binding Specificity:	AA 44-200
Reactivity:	Human
Host:	Rabbit
Clonality:	Polyclonal
Conjugate:	This PSMB7 antibody is un-conjugated
Application:	Western Blotting (WB), Immunofluorescence (IF)

Product Details

Purpose:	PSMB7 Rabbit pAb
Immunogen:	Recombinant fusion protein containing a sequence corresponding to amino acids 44-200 of human PSMB7 (NP_002790.1).
Sequence:	TTIAGVVYKD GIVLGADTRA TEGMVVADKN CSKIHFI SPN IYCCGAGTAA DTDMTTQLIS SNLELHSLST GRLPRVVTAN RMLKQMLFRY QGYIGAALVL GGVDVTGPHL YSIYPHGSTD KLPPYVTMGSG SLAAMAVFED KFRPDMEEEE AKNLVSE
Isotype:	IgG
Cross-Reactivity:	Human, Mouse, Rat
Characteristics:	Polyclonal Antibodies
Purification:	Affinity purification

Target Details

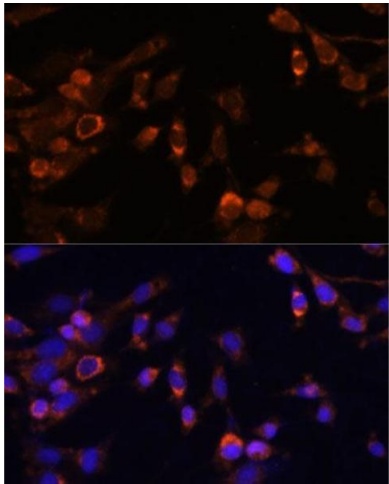
Target:	PSMB7
Alternative Name:	PSMB7 (PSMB7 Products)
Background:	<p>The proteasome is a multicatalytic proteinase complex with a highly ordered ring-shaped 20S core structure. The core structure is composed of 4 rings of 28 non-identical subunits, 2 rings are composed of 7 alpha subunits and 2 rings are composed of 7 beta subunits. Proteasomes are distributed throughout eukaryotic cells at a high concentration and cleave peptides in an ATP/ubiquitin-dependent process in a non-lysosomal pathway. The encoded protein is a member of the proteasome B-type family, also known as the T1B family, and is a 20S core beta subunit in the proteasome. Expression of this catalytic subunit is downregulated by gamma interferon, and proteolytic processing is required to generate a mature subunit. A pseudogene of this gene is located on the long arm of chromosome 14.,PSMB7,Z,Cell Biology & Developmental Biology,Ubiquitin,PSMB7</p>
Molecular Weight:	15kDa/29kDa
Gene ID:	5695
UniProt:	Q99436
Pathways:	Mitotic G1-G1/S Phases , DNA Replication , Synthesis of DNA

Application Details

Application Notes:	WB,1:500 - 1:2000,IF,1:50 - 1:100
Restrictions:	For Research Use only

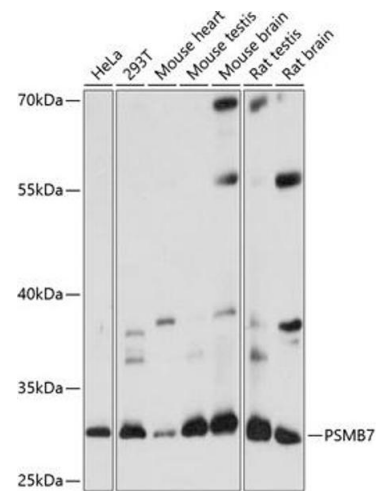
Handling

Format:	Liquid
Buffer:	PBS with 0.02 % sodium azide,50 % glycerol, pH 7.3.
Preservative:	Sodium azide
Precaution of Use:	This product contains Sodium azide: a POISONOUS AND HAZARDOUS SUBSTANCE which should be handled by trained staff only.
Storage:	-20 °C
Storage Comment:	Store at -20°C. Avoid freeze / thaw cycles.



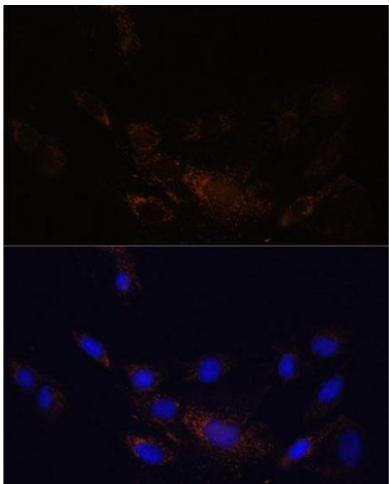
Immunofluorescence

Image 1. Immunofluorescence analysis of NIH-3T3 cells using PSMB7 Polyclonal Antibody (ABIN7269594) at dilution of 1:100 (40x lens). Blue: DAPI for nuclear staining.



Western Blotting

Image 2. Western blot analysis of extracts of various cell lines, using PSMB7 antibody (ABIN7269594) at 1:1000 dilution. Secondary antibody: HRP Goat Anti-Rabbit IgG (H+L) (ABIN1684268 and ABIN3020597) at 1:10000 dilution. Lysates/proteins: 25 µg per lane. Blocking buffer: 3 % nonfat dry milk in TBST. Detection: ECL Basic Kit (RM00020). Exposure time: 1 s.



Immunofluorescence

Image 3. Immunofluorescence analysis of C6 cells using PSMB7 Polyclonal Antibody (ABIN7269594) at dilution of 1:100 (40x lens). Blue: DAPI for nuclear staining.