



[Go to Product page](#)

Datasheet for ABIN7269596

anti-PSMB9 antibody

2 Images

Overview

| | |
|--------------|---|
| Quantity: | 100 µL |
| Target: | PSMB9 |
| Reactivity: | Human |
| Host: | Rabbit |
| Clonality: | Monoclonal |
| Conjugate: | This PSMB9 antibody is un-conjugated |
| Application: | Western Blotting (WB), Immunohistochemistry (IHC) |

Product Details

| | |
|-------------------|---|
| Purpose: | PSMB9/LMP2 Rabbit mAb |
| Immunogen: | A synthesized peptide derived from human PSMB9/LMP2 |
| Isotype: | IgG |
| Cross-Reactivity: | Human, Mouse, Rat |
| Characteristics: | Monoclonal Antibodies |
| Purification: | Affinity purification |

Target Details

| | |
|-------------------|---|
| Target: | PSMB9 |
| Alternative Name: | PSMB9 (PSMB9 Products) |
| Background: | The proteasome is a multicatalytic proteinase complex with a highly ordered ring-shaped 20S |

Target Details

core structure. The core structure is composed of 4 rings of 28 non-identical subunits, 2 rings are composed of 7 alpha subunits and 2 rings are composed of 7 beta subunits. Proteasomes are distributed throughout eukaryotic cells at a high concentration and cleave peptides in an ATP/ubiquitin-dependent process in a non-lysosomal pathway. An essential function of a modified proteasome, the immunoproteasome, is the processing of class I MHC peptides. This gene encodes a member of the proteasome B-type family, also known as the T1B family, that is a 20S core beta subunit. This gene is located in the class II region of the MHC (major histocompatibility complex). Expression of this gene is induced by gamma interferon and this gene product replaces catalytic subunit 1 (proteasome beta 6 subunit) in the immunoproteasome. Proteolytic processing is required to generate a mature subunit. [provided by RefSeq, Mar 2010],LMP2, PSMB6i, RING12, beta1i,Cell Biology & Developmental Biology,Ubiquitin,PSMB9

Molecular Weight: 21kDa

Gene ID: 5698

UniProt: [P28065](#)

Pathways: [Mitotic G1-G1/S Phases](#), [DNA Replication](#), [Synthesis of DNA](#)

Application Details

Application Notes: WB,1:500 - 1:2000,IHC,1:50 - 1:200

Restrictions: For Research Use only

Handling

Format: Liquid

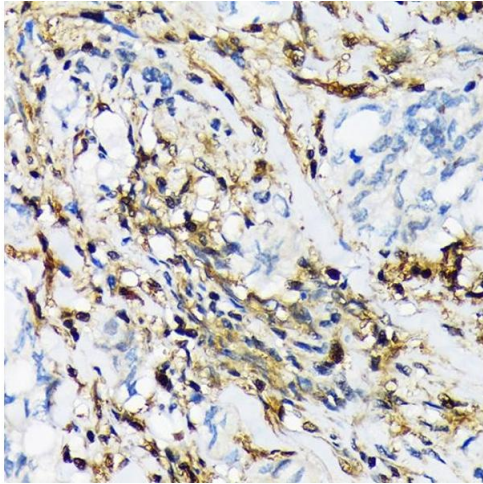
Buffer: PBS with 0.02 % sodium azide,0.05 % BSA,50 % glycerol, pH 7.3.

Preservative: Sodium azide

Precaution of Use: This product contains Sodium azide: a POISONOUS AND HAZARDOUS SUBSTANCE which should be handled by trained staff only.

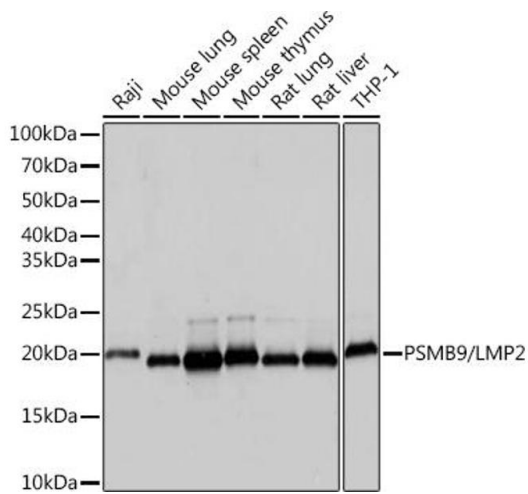
Storage: -20 °C

Storage Comment: Store at -20°C. Avoid freeze / thaw cycles.



Immunohistochemistry

Image 1. Immunohistochemistry of paraffin-embedded human lung cancer using PSMB9/LMP2 Rabbit mAb (ABIN7269596) at dilution of 1:100 (40x lens). Perform microwave antigen retrieval with 10 mM Tris/EDTA buffer pH 9.0 before commencing with IHC staining protocol.



Western Blotting

Image 2. Western blot analysis of extracts of various cell lines, using PSMB9/LMP2 Rabbit mAb (ABIN7269596) at 1:1000 dilution. Secondary antibody: HRP Goat Anti-Rabbit IgG (H+L) (ABIN1684268 and ABIN3020597) at 1:10000 dilution. Lysates/proteins: 25 µg per lane. Blocking buffer: 3 % nonfat dry milk in TBST. Detection: ECL Basic Kit (RM00020). Exposure time: 1s.