

Datasheet for ABIN7269634
anti-PKC delta antibody



[Go to Product page](#)

4 Images

Overview

Quantity:	100 µL
Target:	PKC delta (PKCd)
Reactivity:	Human
Host:	Rabbit
Clonality:	Monoclonal
Conjugate:	This PKC delta antibody is un-conjugated
Application:	Western Blotting (WB), Immunohistochemistry (IHC), Immunofluorescence (IF)

Product Details

Purpose:	PKC delta Rabbit mAb
Immunogen:	A synthesized peptide derived from human PKC delta
Isotype:	IgG
Cross-Reactivity:	Human, Mouse, Rat
Characteristics:	Monoclonal Antibodies
Purification:	Affinity purification

Target Details

Target:	PKC delta (PKCd)
Alternative Name:	PRKCD (PKCd Products)
Background:	Protein kinase C (PKC) is a family of serine- and threonine-specific protein kinases that can be

Target Details

activated by calcium and the second messenger diacylglycerol. PKC family members phosphorylate a wide variety of protein targets and are known to be involved in diverse cellular signaling pathways. PKC family members also serve as major receptors for phorbol esters, a class of tumor promoters. Each member of the PKC family has a specific expression profile and is believed to play distinct roles in cells. The protein encoded by this gene is one of the PKC family members. Studies both in human and mice demonstrate that this kinase is involved in B cell signaling and in the regulation of growth, apoptosis, and differentiation of a variety of cell types. Alternatively spliced transcript variants encoding the same protein have been observed. [provided by RefSeq, Jul 2008],ALPS3, CVID9, MAY1, PKCD, nPKC-delta,Apoptosis,Apoptosis_Inhibition of Apoptosis,Apoptosis_Mitochondrial Control of Apoptosis,B Cell Receptor Signaling Pathway,Cancer,Cell Biology & Developmental Biology,ErbB-HER Signaling Pathway,G protein signaling,G protein signaling_G-Protein-Coupled Receptors Signaling to MAPK/Erk,Immunology & Inflammation,Kinase,Kinase_Serine/threonine kinases,MAPK-Erk Signaling Pathway,Neuroscience,Phospholipase Signaling Pathway,Protein Kinase C Signaling Pathway Pathway,Protein phosphorylation,Signal Transduction,TGF-b-Smad Signaling Pathway,PRKCD

Molecular Weight: 78kDa

Gene ID: 5580

UniProt: [Q05655](#)

Pathways: [Interferon-gamma Pathway](#), [EGFR Signaling Pathway](#), [Neurotrophin Signaling Pathway](#), [Thyroid Hormone Synthesis](#), [Regulation of Actin Filament Polymerization](#), [Carbohydrate Homeostasis](#), [Myometrial Relaxation and Contraction](#), [M Phase](#), [G-protein mediated Events](#), [Dicarboxylic Acid Transport](#), [Positive Regulation of Response to DNA Damage Stimulus](#), [Interaction of EGFR with phospholipase C-gamma](#), [Thromboxane A2 Receptor Signaling](#), [Lipid Metabolism](#)

Application Details

Application Notes: WB,1:500 - 1:2000,IHC,1:50 - 1:200,IF,1:50 - 1:200

Restrictions: For Research Use only

Handling

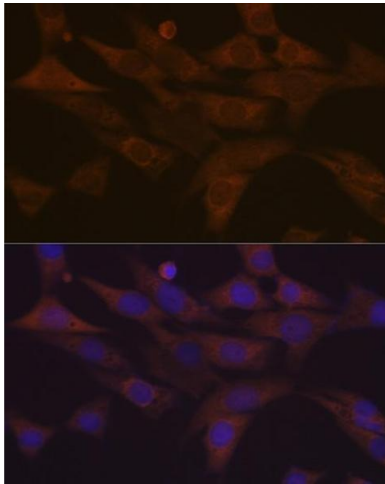
Format: Liquid

Buffer: PBS with 0.02 % sodium azide,0.05 % BSA,50 % glycerol, pH 7.3.

Handling

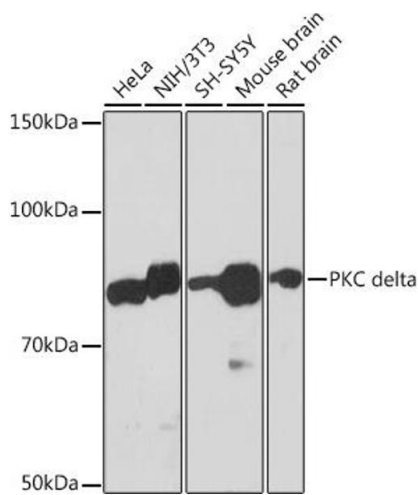
Preservative:	Sodium azide
Precaution of Use:	This product contains Sodium azide: a POISONOUS AND HAZARDOUS SUBSTANCE which should be handled by trained staff only.
Storage:	-20 °C
Storage Comment:	Store at -20°C. Avoid freeze / thaw cycles.

Images



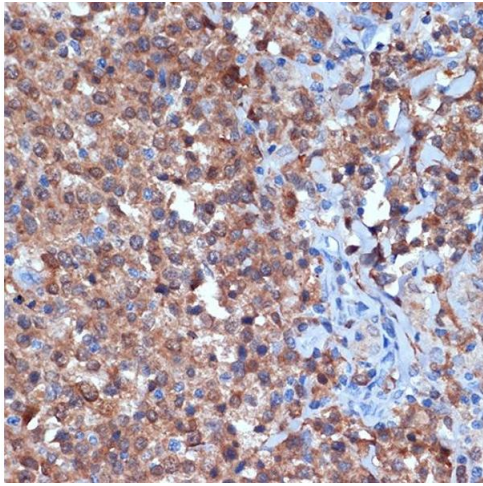
Immunofluorescence

Image 1. Immunofluorescence analysis of NIH-3T3 cells using PKC delta Rabbit mAb at dilution of 1:100 (40x lens). Blue: DAPI for nuclear staining.



Western Blotting

Image 2. Western blot analysis of extracts of various cell lines, using PKC delta Rabbit mAb at 1:1000 dilution. Secondary antibody: HRP Goat Anti-Rabbit IgG (H+L) (ABIN1684268 and ABIN3020597) at 1:10000 dilution. Lysates/proteins: 25 µg per lane. Blocking buffer: 3 % nonfat dry milk in TBST. Detection: ECL Basic Kit (RM00020). Exposure time: 3 min.



Immunohistochemistry

Image 3. Immunohistochemistry of paraffin-embedded human thyroid cancer using PKC delta Rabbit mAb at dilution of 1:100 (40x lens). Perform microwave antigen retrieval with 10 mM Tris/EDTA buffer pH 9.0 before commencing with IHC staining protocol.

Please check the [product details page](#) for more images. Overall 4 images are available for ABIN7269634.