

Datasheet for ABIN7269642

anti-PKC mu antibody (pSer916)[Go to Product page](#)**1** Image

Overview

Quantity:	100 µL
Target:	PKC mu (PRKD1)
Binding Specificity:	pSer916
Reactivity:	Human
Host:	Rabbit
Clonality:	Polyclonal
Application:	Western Blotting (WB)

Product Details

Purpose:	Phospho-PKC mu-S916 Rabbit pAb
Immunogen:	A phospho specific peptide corresponding to residues surrounding S916 of human PKC mu.
Isotype:	IgG
Cross-Reactivity:	Human, Mouse, Rat
Characteristics:	Phosphorylated Antibodies
Purification:	Affinity purification

Target Details

Target:	PKC mu (PRKD1)
Alternative Name:	PRKD1 (PRKD1 Products)
Background:	The protein encoded by this gene is a serine/threonine protein kinase involved in many cellular

Target Details

processes, including Golgi body membrane integrity and transport, cell migration and differentiation, MAPK8/JNK1 and Ras pathway signaling, MAPK1/3 (ERK1/2) pathway signaling, cell survival, and regulation of cell shape and adhesion. [provided by RefSeq, Jan 2017],CHDED,PKC-MU,PKCM,PKD,PRKCM,PRKD1,Apoptosis,Apoptosis_Inhibition of Apoptosis,Apoptosis_Mitochondrial Control of Apoptosis,Autophagy,B Cell Receptor Signaling Pathway,Cancer,Cell Biology & Developmental Biology,Cytoskeleton,Cytoskeleton_Actins,Endocrine & Metabolism,ErbB-HER Signaling Pathway,G protein signaling,G protein signaling_G-Protein-Coupled Receptors Signaling to MAPK/Erk,Immunology & Inflammation,Kinase,Kinase_Serine/threonine kinases,Lipid Metabolism,MAPK-Erk Signaling Pathway,Phospholipase Signaling Pathway,Protein Kinase C Signaling Pathway Pathway,Protein phosphorylation,Signal Transduction,PRKD1

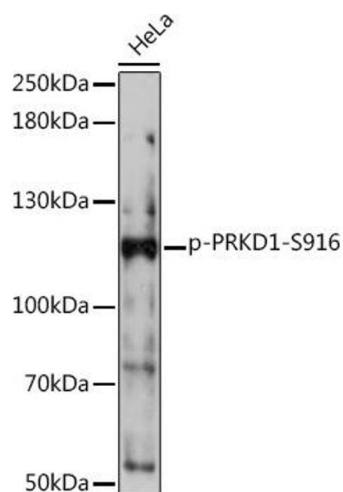
Molecular Weight:	101kDa
Gene ID:	5587
UniProt:	Q15139
Pathways:	Myometrial Relaxation and Contraction

Application Details

Application Notes:	WB,1:500 - 1:2000
Restrictions:	For Research Use only

Handling

Format:	Liquid
Buffer:	PBS with 0.02 % sodium azide,50 % glycerol, pH 7.3.
Preservative:	Sodium azide
Precaution of Use:	This product contains Sodium azide: a POISONOUS AND HAZARDOUS SUBSTANCE which should be handled by trained staff only.
Storage:	-20 °C
Storage Comment:	Store at -20°C. Avoid freeze / thaw cycles.



Western Blotting

Image 1. Western blot analysis of extracts of HeLa cells, using Phospho-PKC mu-S916 Rabbit pAb (ABIN7269642) at 1:1000 dilution. Secondary antibody: HRP Goat Anti-Rabbit IgG (H+L) (ABIN1684268 and ABIN3020597) at 1:10000 dilution. Lysates/proteins: 25 µg per lane. Blocking buffer: 3 % nonfat dry milk in TBST. Detection: ECL Basic Kit (RM00020). Exposure time: 90s.