

Datasheet for ABIN7269644  
**anti-PKC mu antibody (AA 800-900)**



[Go to Product page](#)

1 Image

## Overview

Quantity:	100 µL
Target:	PKC mu (PRKD1)
Binding Specificity:	AA 800-900
Reactivity:	Human
Host:	Rabbit
Clonality:	Polyclonal
Conjugate:	This PKC mu antibody is un-conjugated
Application:	Western Blotting (WB)

## Product Details

Purpose:	PKC mu Rabbit pAb
Immunogen:	A synthetic peptide corresponding to a sequence within amino acids 800-900 of human PKC mu (NP_002733.2).
Sequence:	YPPNPWKEIS HEAIDLINNL LQVKMRKRYSDKTLSPWL QDYQTWLTLR ELECKIGERY ITHESDDLRLW EKYAGEQGLQ YPTHLINPSA SHSDTPETEE T
Isotype:	IgG
Cross-Reactivity:	Human, Mouse
Characteristics:	Polyclonal Antibodies
Purification:	Affinity purification

## Target Details

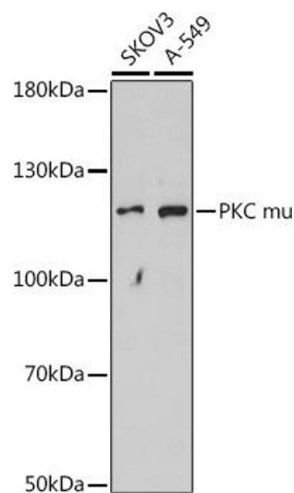
Target:	PKC mu (PRKD1)
Alternative Name:	PRKD1 ( <a href="#">PRKD1 Products</a> )
Background:	The protein encoded by this gene is a serine/threonine protein kinase involved in many cellular processes, including Golgi body membrane integrity and transport, cell migration and differentiation, MAPK8/JNK1 and Ras pathway signaling, MAPK1/3 (ERK1/2) pathway signaling, cell survival, and regulation of cell shape and adhesion.,CHDED,PKC-MU,PKCM,PKD,PRKCM,PRKD1,Cancer,Signal Transduction,G protein signaling,G2/M DNA Damage Checkpoint,Kinase,Serine/threonine kinases,Phospholipase Signaling Pathway,Protein Kinase C Signaling Pathway,ErbB-HER Signaling Pathway,MAPK-Erk Signaling Pathway,Cell Biology & Developmental Biology,Apoptosis,Mitochondrial Control of Apoptosis,Inhibition of Apoptosis,Autophagy,Cytoskeleton,Actins,Endocrine & Metabolism,Lipid Metabolism,Immunology & Inflammation,B Cell Receptor Signaling Pathway,PRKD1
Molecular Weight:	101kDa
Gene ID:	5587
UniProt:	<a href="#">Q15139</a>
Pathways:	<a href="#">Myometrial Relaxation and Contraction</a>

## Application Details

Application Notes:	WB,1:500 - 1:2000
Restrictions:	For Research Use only

## Handling

Format:	Liquid
Buffer:	PBS with 0.02 % sodium azide,50 % glycerol, pH 7.3.
Preservative:	Sodium azide
Precaution of Use:	This product contains Sodium azide: a POISONOUS AND HAZARDOUS SUBSTANCE which should be handled by trained staff only.
Storage:	-20 °C
Storage Comment:	Store at -20°C. Avoid freeze / thaw cycles.



Western Blotting

**Image 1.** Western blot analysis of extracts of various cell lines, using PKC mu antibody (ABIN7269644) at 1:1000 dilution. Secondary antibody: HRP Goat Anti-Rabbit IgG (H+L) (ABIN1684268 and ABIN3020597) at 1:10000 dilution. Lysates/proteins: 25 µg per lane. Blocking buffer: 3 % nonfat dry milk in TBST. Detection: ECL Enhanced Kit (RM00021). Exposure time: 90s.