

Datasheet for ABIN7269673
anti-POGLUT1 antibody (AA 160-280)



[Go to Product page](#)

2 Images

Overview

Quantity:	100 µL
Target:	POGLUT1
Binding Specificity:	AA 160-280
Reactivity:	Human
Host:	Rabbit
Clonality:	Polyclonal
Conjugate:	This POGLUT1 antibody is un-conjugated
Application:	Western Blotting (WB), Immunofluorescence (IF)

Product Details

Purpose:	POGLUT1 Rabbit pAb
Immunogen:	Recombinant fusion protein containing a sequence corresponding to amino acids 160-280 of human POGLUT1 (NP_689518.1).
Sequence:	MYPAWTFWEG GPAVWPIYPT GLGRWDLFRE DLVRSAAQWP WKKKNSTAYF RGSRTSPERD PLILLSRKNP KLVDAEYTKN QAWKSMKDTL GKPAAKDVHL VDHCKYKYL F NFRGVAASFR F
Isotype:	IgG
Cross-Reactivity:	Mouse, Rat
Characteristics:	Polyclonal Antibodies
Purification:	Affinity purification

Target Details

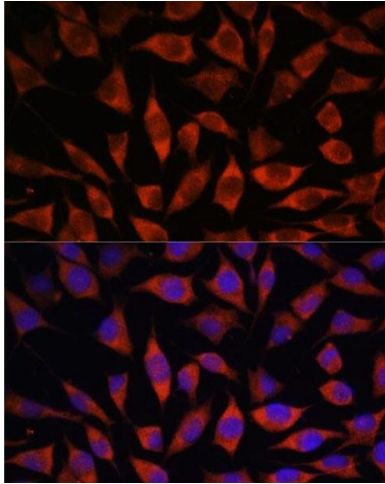
Target:	POGLUT1
Alternative Name:	POGLUT1 (POGLUT1 Products)
Background:	<p>This gene encodes a protein with both O-glucosyltransferase and O-xylosyltransferase activity which localizes to the lumen of the endoplasmic reticulum. This protein has a carboxy-terminal KTEL motif which is predicted to function as an endoplasmic reticulum retention signal. This gene is an essential regulator of Notch signalling and likely plays a role in cell fate and tissue formation during development. It may also play a role in the pathogenesis of leukemia. Mutations in this gene have been associated with the autosomal dominant genodermatosis Dowling-Degos disease 4. Alternative splicing results in multiple transcript variants. [provided by RefSeq, Apr 2014],C3orf9,CLP46,KDELCL1,KTELC1,LGMD2Z,MDS010,MDSRP,Rumi,hCLP46,POGLUT1,Cell Biology & Developmental Biology,POGLUT1</p>
Gene ID:	56983
UniProt:	Q8NBL1
Pathways:	Notch Signaling

Application Details

Application Notes:	WB,1:500 - 1:2000,IF,1:50 - 1:200
Restrictions:	For Research Use only

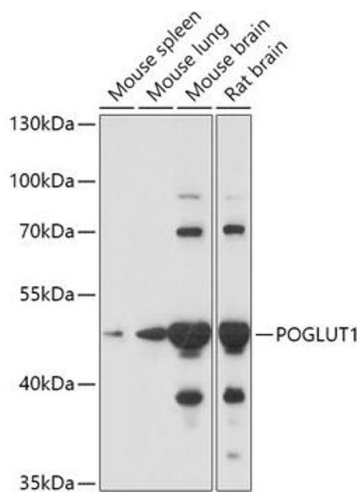
Handling

Format:	Liquid
Buffer:	PBS with 0.02 % sodium azide,50 % glycerol, pH 7.3.
Preservative:	Sodium azide
Precaution of Use:	This product contains Sodium azide: a POISONOUS AND HAZARDOUS SUBSTANCE which should be handled by trained staff only.
Storage:	-20 °C
Storage Comment:	Store at -20°C. Avoid freeze / thaw cycles.



Immunofluorescence

Image 1. Immunofluorescence analysis of L929 cells using POGLUT1 antibody (ABIN7269673) at dilution of 1:100. Blue: DAPI for nuclear staining.



Western Blotting

Image 2. Western blot analysis of extracts of various cell lines, using POGLUT1 antibody (ABIN7269673) at 1:1000 dilution. Secondary antibody: HRP Goat Anti-Rabbit IgG (H+L) (ABIN1684268 and ABIN3020597) at 1:10000 dilution. Lysates/proteins: 25 µg per lane. Blocking buffer: 3 % nonfat dry milk in TBST. Detection: ECL Basic Kit (RM00020). Exposure time: 15s.