



Datasheet for ABIN7269675  
**anti-PPP1R14B antibody (AA 68-147)**



[Go to Product page](#)

1 Image

Overview

Quantity:	100 µL
Target:	PPP1R14B
Binding Specificity:	AA 68-147
Reactivity:	Human
Host:	Rabbit
Clonality:	Polyclonal
Conjugate:	This PPP1R14B antibody is un-conjugated
Application:	Western Blotting (WB), Immunofluorescence (IF)

Product Details

Purpose:	PPP1R14B Rabbit pAb
Immunogen:	Recombinant fusion protein containing a sequence corresponding to amino acids 68-147 of human PPP1R14B (NP_619634.1).
Sequence:	RLNLEEWILE QLTRLTYDCQE EEIPELEIDV DELLDMESDD ARAARVKELL VDCYKPTEAF ISGLLDKIRG MQKLSTPQKK
Isotype:	IgG
Cross-Reactivity:	Human, Mouse, Rat
Characteristics:	Polyclonal Antibodies
Purification:	Affinity purification

## Target Details

---

Target:	PPP1R14B
Alternative Name:	PPP1R14B ( <a href="#">PPP1R14B Products</a> )
Background:	Inhibitor of PPP1CA. Has over 50-fold higher inhibitory activity when phosphorylated (By similarity.,PPP1R14B,PHI-1,PLCB3N,PNG,SOM172,Signal Transduction,Neuroscience,PPP1R14B
Molecular Weight:	16kDa
Gene ID:	26472
UniProt:	<a href="#">Q96C90</a>

## Application Details

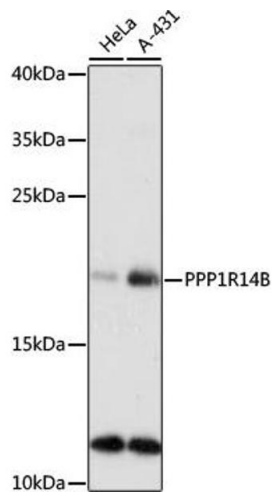
---

Application Notes:	WB,1:500 - 1:2000,IF,1:50 - 1:100
Restrictions:	For Research Use only

## Handling

---

Format:	Liquid
Buffer:	PBS with 0.02 % sodium azide,50 % glycerol, pH 7.3.
Preservative:	Sodium azide
Precaution of Use:	This product contains Sodium azide: a POISONOUS AND HAZARDOUS SUBSTANCE which should be handled by trained staff only.
Storage:	-20 °C
Storage Comment:	Store at -20°C. Avoid freeze / thaw cycles.



### Western Blotting

**Image 1.** Western blot analysis of extracts of various cell lines, using PPP1R14B antibody (ABIN7269675) at 1:1000 dilution. Secondary antibody: HRP Goat Anti-Rabbit IgG (H+L) (ABIN1684268 and ABIN3020597) at 1:10000 dilution. Lysates/proteins: 25 µg per lane. Blocking buffer: 3 % nonfat dry milk in TBST. Detection: ECL Basic Kit (RM00020). Exposure time: 90s.