

Datasheet for ABIN7269682
anti-PPM1F antibody (AA 1-190)[Go to Product page](#)

1 Image

Overview

Quantity:	100 µL
Target:	PPM1F
Binding Specificity:	AA 1-190
Reactivity:	Human
Host:	Rabbit
Clonality:	Polyclonal
Conjugate:	This PPM1F antibody is un-conjugated
Application:	Western Blotting (WB)

Product Details

Purpose:	PPM1F Rabbit pAb
Immunogen:	Recombinant fusion protein containing a sequence corresponding to amino acids 1-190 of human PPM1F (NP_055449.1).
Sequence:	MSSGAPQKSS PMASGAEETP GFLDTLLQDF PALLNPEDPL PWKAPGTVLS QEEVEGELAE LAMGFLGSRK APPPLAAALA HEAVSPLLQT DLSEFRKLPR EEEEEEDDD EEEKAPVTLL DAQSLAQSF NRLWEVAGQW QKQVPLAARA SQRQWLVSIIH AIRNTRRKME DRHVSLPSFN QLFGLSDPVN
Isotype:	IgG
Cross-Reactivity:	Human
Characteristics:	Polyclonal Antibodies

Product Details

Purification: Affinity purification

Target Details

Target: PPM1F

Alternative Name: PPM1F ([PPM1F Products](#))

Background: The protein encoded by this gene is a member of the PP2C family of Ser/Thr protein phosphatases. PP2C family members are known to be negative regulators of cell stress response pathways. This phosphatase can interact with Rho guanine nucleotide exchange factors (PIX), and thus block the effects of p21-activated kinase 1 (PAK), a protein kinase mediating biological effects downstream of Rho GTPases. Calcium/calmodulin-dependent protein kinase II gamma (CAMK2G/CAMK-II) is found to be one of the substrates of this phosphatase. The overexpression of this phosphatase or CAMK2G has been shown to mediate caspase-dependent apoptosis. An alternatively spliced transcript variant has been identified, but its full-length nature has not been determined.,PPM1F,CAMKP,CaMKPase,FEM-2,POPX2,hFEM-2,Signal Transduction,Kinase,Cell Biology & Developmental Biology,Apoptosis,Neuroscience,Calcium Signaling,PPM1F

Molecular Weight: 38kDa/49kDa

Gene ID: 9647

UniProt: [P49593](#)

Pathways: [Positive Regulation of Endopeptidase Activity](#)

Application Details

Application Notes: WB,1:500 - 1:2000

Restrictions: For Research Use only

Handling

Format: Liquid

Buffer: PBS with 0.02 % sodium azide,50 % glycerol, pH 7.3.

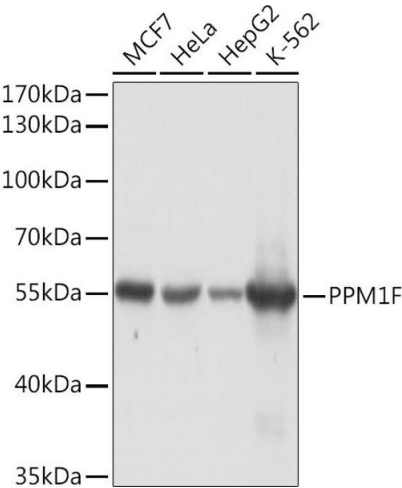
Preservative: Sodium azide

Precaution of Use: This product contains Sodium azide: a POISONOUS AND HAZARDOUS SUBSTANCE which should be handled by trained staff only.

Handling

Storage:	-20 °C
Storage Comment:	Store at -20°C. Avoid freeze / thaw cycles.

Images



Western Blotting

Image 1. Western blot analysis of extracts of various cell lines, using PPM1F Rabbit pAb (ABIN7269682) at 1:1000 dilution. Secondary antibody: HRP Goat Anti-Rabbit IgG (H+L) (ABIN1684268 and ABIN3020597) at 1:10000 dilution. Lysates/proteins: 25 µg per lane. Blocking buffer: 3 % nonfat dry milk in TBST. Detection: ECL Basic Kit (RM00020). Exposure time: 10s.