

Datasheet for ABIN7269690
anti-PPP2R5D antibody (AA 450-550)

6 Images

[Go to Product page](#)

Overview

Quantity:	100 µL
Target:	PPP2R5D
Binding Specificity:	AA 450-550
Reactivity:	Human
Host:	Rabbit
Clonality:	Polyclonal
Conjugate:	This PPP2R5D antibody is un-conjugated
Application:	Western Blotting (WB), Immunohistochemistry (IHC), Immunofluorescence (IF)

Product Details

Purpose:	PP2A-B56δ/PR61δ/PPP2R5D Rabbit pAb
Immunogen:	A synthetic peptide corresponding to a sequence within amino acids 450-550 of human PP2A-B56delta/PR61delta/PP2A-B56delta/PR61delta/PPP2R5D (NP_006236.1).
Sequence:	LYRNSKSHWN KTIHGLIYNA LKLFMEMNQK LFDDCTQQYK AEKQKGRFRM KEREEMWQKI EELARLNPQY PMFRAPPLP PVYSMETETP TAEDIQLLKR T
Isotype:	IgG
Cross-Reactivity:	Human, Mouse, Rat
Characteristics:	Polyclonal Antibodies
Purification:	Affinity purification

Target Details

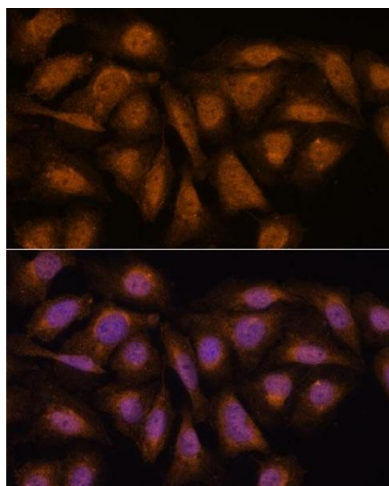
Target:	PPP2R5D
Alternative Name:	PPP2R5D (PPP2R5D Products)
Background:	The product of this gene belongs to the phosphatase 2A regulatory subunit B family. Protein phosphatase 2A is one of the four major Ser/Thr phosphatases, and it is implicated in the negative control of cell growth and division. It consists of a common heteromeric core enzyme, which is composed of a catalytic subunit and a constant regulatory subunit, that associates with a variety of regulatory subunits. The B regulatory subunit might modulate substrate selectivity and catalytic activity. This gene encodes a delta isoform of the regulatory subunit B56 subfamily. Alternatively spliced transcript variants encoding different isoforms have been identified.,PPP2R5D,B56D,MRD35,B56delta,Signal Transduction,Cell Biology & Developmental Biology,Cell Cycle,Centromere,Neuroscience,PPP2R5D
Molecular Weight:	58kDa/66kDa/69kDa
Gene ID:	5528
UniProt:	Q14738
Pathways:	PI3K-Akt Signaling , Activation of Innate immune Response , Toll-Like Receptors Cascades

Application Details

Application Notes:	WB,1:500 - 1:2000,IHC,1:100 - 1:200,IF,1:50 - 1:200
Restrictions:	For Research Use only

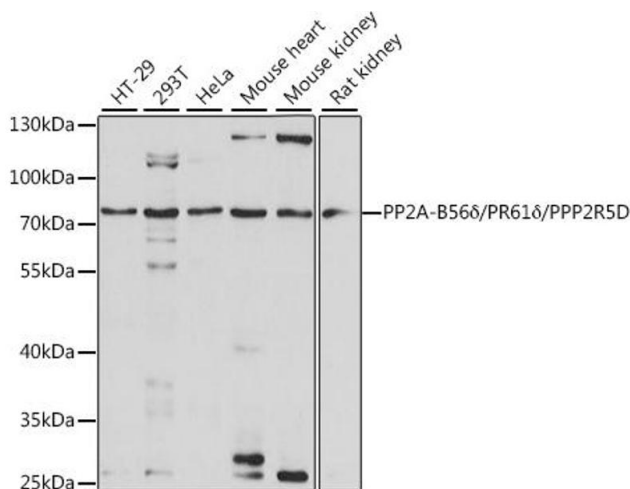
Handling

Format:	Liquid
Buffer:	PBS with 0.02 % sodium azide,50 % glycerol, pH 7.3.
Preservative:	Sodium azide
Precaution of Use:	This product contains Sodium azide: a POISONOUS AND HAZARDOUS SUBSTANCE which should be handled by trained staff only.
Storage:	-20 °C
Storage Comment:	Store at -20°C. Avoid freeze / thaw cycles.



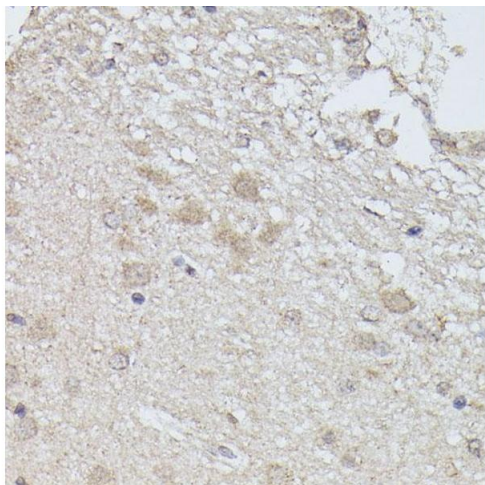
Immunofluorescence

Image 1. Immunofluorescence analysis of U-2 OS cells using PP2A-B56δ/PR61δ/PP2A-B56δ/PR61δ/PPP2R5D antibody (ABIN7269690) at dilution of 1:100. Blue: DAPI for nuclear staining.



Western Blotting

Image 2. Western blot analysis of extracts of various cell lines, using PP2A-B56δ/PR61δ/PP2A-B56δ/PR61δ/PPP2R5D antibody (ABIN7269690) at 1:1000 dilution. Secondary antibody: HRP Goat Anti-Rabbit IgG (H+L) (ABIN1684268 and ABIN3020597) at 1:10000 dilution. Lysates/proteins: 25 µg per lane. Blocking buffer: 3 % nonfat dry milk in TBST. Detection: ECL Basic Kit (RM00020). Exposure time: 90s.



Immunohistochemistry

Image 3. Immunohistochemistry of paraffin-embedded rat brain using PP2A-B56δ/PR61δ/PP2A-B56δ/PR61δ/PPP2R5D antibody (ABIN7269690) at dilution of 1:100 (40x lens). Perform microwave antigen retrieval with 10 mM PBS buffer pH 7.2 before commencing with IHC staining protocol.

Please check the [product details page](#) for more images. Overall 6 images are available for ABIN7269690.