

Datasheet for ABIN7269691
anti-PPP2R5E antibody (AA 398-467)[Go to Product page](#)

1 Image

Overview

Quantity:	100 µL
Target:	PPP2R5E
Binding Specificity:	AA 398-467
Reactivity:	Human
Host:	Rabbit
Clonality:	Polyclonal
Conjugate:	This PPP2R5E antibody is un-conjugated
Application:	Western Blotting (WB)

Product Details

Purpose:	PP2A-B56δ/PR61δ/PPP2R5E Rabbit pAb
Immunogen:	Recombinant fusion protein containing a sequence corresponding to amino acids 398-467 of human PP2A-B56delta/PR61delta/PPP2R5E (NP_006237.1).
Sequence:	HWNPAIVALV YNVLKAFMEM NSTMFDELTA TYKSDRQREK KKEKEREELW KKLEDLELKR GLRRDGIPT
Isotype:	IgG
Cross-Reactivity:	Human, Mouse
Characteristics:	Polyclonal Antibodies
Purification:	Affinity purification

Target Details

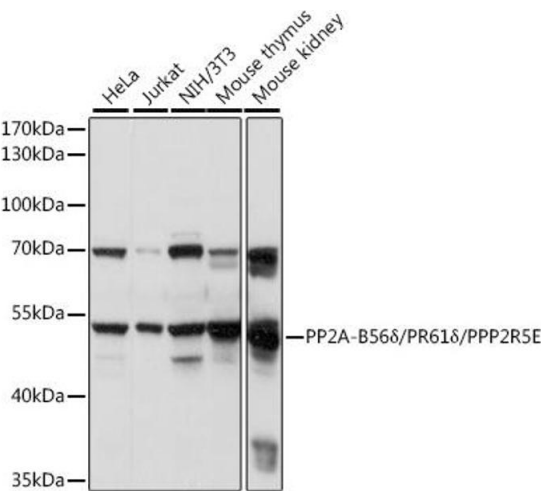
Target:	PPP2R5E
Alternative Name:	PPP2R5E (PPP2R5E Products)
Background:	<p>The protein encoded by this gene belongs to the phosphatase 2A regulatory subunit B family. Protein phosphatase 2A is one of the four major Ser/Thr phosphatases, and it is implicated in the negative control of cell growth and division. It consists of a common heteromeric core enzyme, which is composed of a catalytic subunit and a constant regulatory subunit, that associates with a variety of regulatory subunits. The B regulatory subunit might modulate substrate selectivity and catalytic activity. This gene encodes an epsilon isoform of the regulatory subunit B56 subfamily. Multiple transcript variants encoding several different isoforms have been found for this gene.,PPP2R5E,B56E,B56epsilon,Signal Transduction,Cell Biology & Developmental Biology,Cell Cycle,Centromere,Neuroscience,PPP2R5E</p>
Molecular Weight:	46kDa/54kDa
Gene ID:	5529
UniProt:	Q16537
Pathways:	PI3K-Akt Signaling

Application Details

Application Notes:	WB,1:500 - 1:2000
Restrictions:	For Research Use only

Handling

Format:	Liquid
Buffer:	PBS with 0.02 % sodium azide,50 % glycerol, pH 7.3.
Preservative:	Sodium azide
Precaution of Use:	This product contains Sodium azide: a POISONOUS AND HAZARDOUS SUBSTANCE which should be handled by trained staff only.
Storage:	-20 °C
Storage Comment:	Store at -20°C. Avoid freeze / thaw cycles.



Western Blotting

Image 1. Western blot analysis of extracts of various cell lines, using PP2A-B56δ/PR61δ/PPP2R5E antibody (ABIN7269691) at 1:1000 dilution. Secondary antibody: HRP Goat Anti-Rabbit IgG (H+L) (ABIN1684268 and ABIN3020597) at 1:10000 dilution. Lysates/proteins: 25 µg per lane. Blocking buffer: 3 % nonfat dry milk in TBST. Detection: ECL Basic Kit (RM00020). Exposure time: 1s.