

Datasheet for ABIN7269696

anti-PPM1G antibody**1** Image[Go to Product page](#)

Overview

Quantity:	100 µL
Target:	PPM1G
Reactivity:	Human
Host:	Rabbit
Clonality:	Monoclonal
Conjugate:	This PPM1G antibody is un-conjugated
Application:	Western Blotting (WB)

Product Details

Purpose:	PPM1G Rabbit mAb
Immunogen:	Recombinant protein of Human PPM1G.
Isotype:	IgG
Cross-Reactivity:	Human, Mouse, Rat
Characteristics:	Monoclonal Antibodies
Purification:	Affinity purification

Target Details

Target:	PPM1G
Alternative Name:	PPM1G (PPM1G Products)
Background:	The protein encoded by this gene is a member of the PP2C family of Ser/Thr protein

Target Details

phosphatases. PP2C family members are known to be negative regulators of cell stress response pathways. This phosphatase is found to be responsible for the dephosphorylation of Pre-mRNA splicing factors, which is important for the formation of functional spliceosome. Studies of a similar gene in mice suggested a role of this phosphatase in regulating cell cycle progression.,PPM1G,PP2CG,PP2CGAMMA,PPP2CG,Epigenetics & Nuclear Signaling,Signal Transduction,Kinase,Cell Biology & Developmental Biology,Cell Cycle,PPM1G

Molecular Weight: 59kDa

Gene ID: 5496

UniProt: [O15355](#)

Application Details

Application Notes: WB,1:500 - 1:2000

Restrictions: For Research Use only

Handling

Format: Liquid

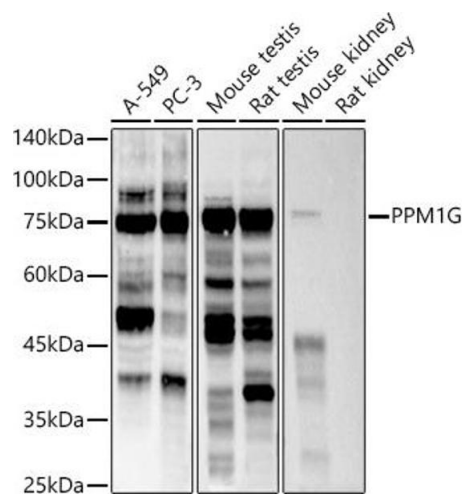
Buffer: PBS with 0.02 % sodium azide,0.05 % BSA,50 % glycerol, pH 7.3.

Preservative: Sodium azide

Precaution of Use: This product contains Sodium azide: a POISONOUS AND HAZARDOUS SUBSTANCE which should be handled by trained staff only.

Storage: -20 °C

Storage Comment: Store at -20°C. Avoid freeze / thaw cycles.



Western Blotting

Image 1. Western blot analysis of extracts of various cell lines, using PPM1G antibody (ABIN7269696) at 1:500 dilution. Secondary antibody: HRP Goat Anti-Rabbit IgG (H+L) (ABIN1684268 and ABIN3020597) at 1:10000 dilution. Lysates/proteins: 25 µg per lane. Blocking buffer: 3 % nonfat dry milk in TBST. Detection: ECL Basic Kit (RM00020). Exposure time: 60s.