

Datasheet for ABIN7269704

anti-PTPN11 antibody

4 Images

[Go to Product page](#)

Overview

Quantity:	100 µL
Target:	PTPN11
Reactivity:	Human
Host:	Rabbit
Clonality:	Monoclonal
Conjugate:	This PTPN11 antibody is un-conjugated
Application:	Western Blotting (WB), Immunofluorescence (IF), Immunoprecipitation (IP)

Product Details

Purpose:	SHP2 Rabbit mAb
Immunogen:	A synthesized peptide derived from human SHP2
Isotype:	IgG
Cross-Reactivity:	Human, Mouse, Rat
Characteristics:	Monoclonal Antibodies
Purification:	Affinity purification

Target Details

Target:	PTPN11
Alternative Name:	PTPN11 (PTPN11 Products)
Target Type:	Viral Protein

Target Details

Background:	<p>The protein encoded by this gene is a member of the protein tyrosine phosphatase (PTP) family. PTPs are known to be signaling molecules that regulate a variety of cellular processes including cell growth, differentiation, mitotic cycle, and oncogenic transformation. This PTP contains two tandem Src homology-2 domains, which function as phospho-tyrosine binding domains and mediate the interaction of this PTP with its substrates. This PTP is widely expressed in most tissues and plays a regulatory role in various cell signaling events that are important for a diversity of cell functions, such as mitogenic activation, metabolic control, transcription regulation, and cell migration. Mutations in this gene are a cause of Noonan syndrome as well as acute myeloid leukemia. [provided by RefSeq, Aug 2016],BPTP3,CFC,JMML,METCDS,NS1,PTP-1D,PTP2C,SH-PTP2,SH-PTP3,SHP2,PTPN11,B Cell Receptor Signaling Pathway,Cell Biology & Developmental Biology,Endocrine & Metabolism,ErbB-HER Signaling Pathway,IL-6 Receptor Signaling Pathway,Immunology & Inflammation,Insulin Receptor Signaling Pathway,Kinase,Kinase_Tyrosine kinases,Neuroscience,Protein phosphorylation,Signal Transduction,PTPN11</p>
Molecular Weight:	68kDa
Gene ID:	5781
UniProt:	Q06124
Pathways:	JAK-STAT Signaling , RTK Signaling , TCR Signaling , Interferon-gamma Pathway , Fc-epsilon Receptor Signaling Pathway , EGFR Signaling Pathway , Neurotrophin Signaling Pathway , Negative Regulation of Hormone Secretion , Carbohydrate Homeostasis , Toll-Like Receptors Cascades , CXCR4-mediated Signaling Events , Signaling Events mediated by VEGFR1 and VEGFR2 , Signaling of Hepatocyte Growth Factor Receptor , VEGFR1 Specific Signals , BCR Signaling , Warburg Effect

Application Details

Application Notes:	WB,1:500 - 1:2000,IF,1:50 - 1:200,IP,1:50 - 1:200
Restrictions:	For Research Use only

Handling

Format:	Liquid
Buffer:	PBS with 0.02 % sodium azide,0.05 % BSA,50 % glycerol, pH 7.3.
Preservative:	Sodium azide

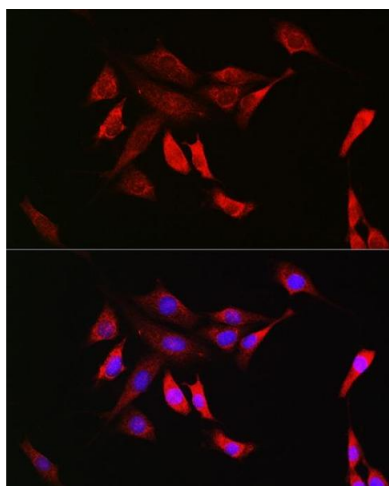
Handling

Precaution of Use: This product contains Sodium azide: a POISONOUS AND HAZARDOUS SUBSTANCE which should be handled by trained staff only.

Storage: -20 °C

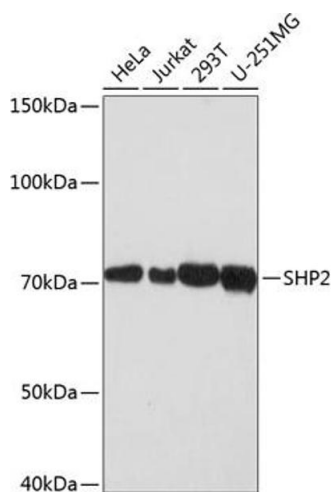
Storage Comment: Store at -20°C. Avoid freeze / thaw cycles.

Images



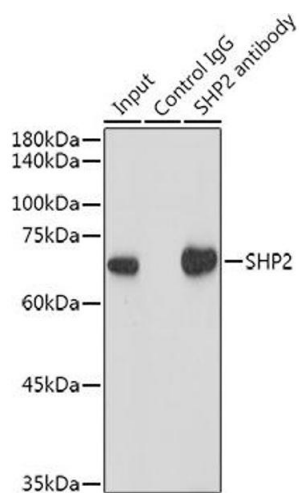
Immunofluorescence

Image 1. Immunofluorescence analysis of NIH/3T3 cells using SHP2 Rabbit mAb (ABIN7269704) at dilution of 1:100 (40x lens). Blue: DAPI for nuclear staining.



Western Blotting

Image 2. Western blot analysis of extracts of various cell lines, using SHP2 antibody (ABIN7269704) at 1:1000 dilution. Secondary antibody: HRP Goat Anti-Rabbit IgG (H+L) (ABIN1684268 and ABIN3020597) at 1:10000 dilution. Lysates/proteins: 25 µg per lane. Blocking buffer: 3 % nonfat dry milk in TBST. Detection: ECL Basic Kit (RM00020). Exposure time: 3 min.



Immunoprecipitation

Image 3. Immunoprecipitation analysis of 300 µg extracts of HeLa cells using 3 µg SHP2 antibody (ABIN7269704). Western blot was performed from the immunoprecipitate using SHP2 antibody (ABIN7269704) at a dilution of 1:1000.

Please check the [product details page](#) for more images. Overall 4 images are available for ABIN7269704.