

Datasheet for ABIN7269709  
**anti-PTPRG antibody (AA 250-450)**[Go to Product page](#)

## 1 Image

## Overview

Quantity:	100 µL
Target:	PTPRG
Binding Specificity:	AA 250-450
Reactivity:	Human
Host:	Rabbit
Clonality:	Polyclonal
Conjugate:	This PTPRG antibody is un-conjugated
Application:	Western Blotting (WB)

## Product Details

Purpose:	PTPRG Rabbit pAb
Immunogen:	Recombinant fusion protein containing a sequence corresponding to amino acids 250-450 of human PTPRG (NP_002832.3).
Sequence:	YRYTGSLLTP PCSEIVEWIV FRRPVPISYH QLEAFYSIFT TEQQDHVKSV EYLRNNFRPQ QRLHDRVVSK SAVRDSWNHD MTDLENPLG TEASKVCSSP PIHMKVQLN QTALQVWSWQ PETIYHPPIM NYMISYSWTK NEDEKEKTFT KDSDKDLKAT ISHVSPDSLY LFRVQAVCRN DMRSDFSQTM LFAQNTTRIF Q
Isotype:	IgG
Cross-Reactivity:	Human, Mouse, Rat
Characteristics:	Polyclonal Antibodies

## Product Details

Purification: Affinity purification

## Target Details

Target: PTPRG

Alternative Name: PTPRG ([PTPRG Products](#))

Background: The protein encoded by this gene is a member of the protein tyrosine phosphatase (PTP) family. PTPs are known to be signaling molecules that regulate a variety of cellular processes including cell growth, differentiation, mitotic cycle, and oncogenic transformation. This PTP possesses an extracellular region, a single transmembrane region, and two tandem intracytoplasmic catalytic domains, and thus represents a receptor-type PTP. The extracellular region of this PTP contains a carbonic anhydrase-like (CAH) domain, which is also found in the extracellular region of PTPRBETA/ZETA. This gene is located in a chromosomal region that is frequently deleted in renal cell carcinoma and lung carcinoma, thus is thought to be a candidate tumor suppressor gene.,PTPRG,HPTPG,PTPG,R-PTP-GAMMA,RPTPG,Signal Transduction,PTPRG

Molecular Weight: 158kDa/162kDa

Gene ID: 5793

UniProt: [P23470](#)

## Application Details

Application Notes: WB,1:500 - 1:2000

Restrictions: For Research Use only

## Handling

Format: Liquid

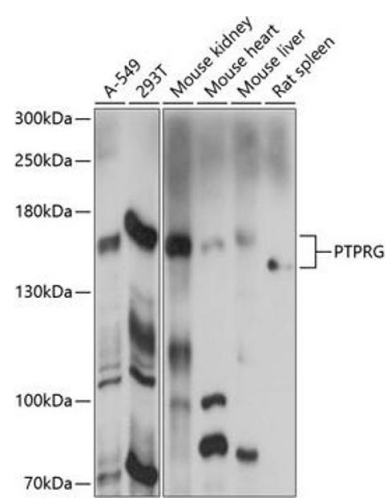
Buffer: PBS with 0.02 % sodium azide,50 % glycerol, pH 7.3.

Preservative: Sodium azide

Precaution of Use: This product contains Sodium azide: a POISONOUS AND HAZARDOUS SUBSTANCE which should be handled by trained staff only.

Storage: -20 °C

Storage Comment: Store at -20°C. Avoid freeze / thaw cycles.



### Western Blotting

**Image 1.** Western blot analysis of extracts of various cell lines, using PTPRG antibody (ABIN7269709) at 1:1000 dilution. Secondary antibody: HRP Goat Anti-Rabbit IgG (H+L) (ABIN1684268 and ABIN3020597) at 1:10000 dilution. Lysates/proteins: 25 µg per lane. Blocking buffer: 3 % nonfat dry milk in TBST. Detection: ECL Basic Kit (RM00020). Exposure time: 90s.