



[Go to Product page](#)

Datasheet for ABIN7269720
anti-Proteinase K antibody

1 Image

Overview

Quantity:	100 µL
Target:	Proteinase K
Reactivity:	Human
Host:	Rabbit
Clonality:	Polyclonal
Conjugate:	This Proteinase K antibody is un-conjugated
Application:	Western Blotting (WB)

Product Details

Purpose:	Proteinase K Rabbit pAb
Immunogen:	Recombinant protein of human Proteinase K.
Isotype:	IgG
Cross-Reactivity:	Human
Characteristics:	Polyclonal Antibodies
Purification:	Affinity purification

Target Details

Target:	Proteinase K
Abstract:	Proteinase K Products
Background:	Proteinase K

Application Details

Application Notes: WB,1:500 - 1:2000

Restrictions: For Research Use only

Handling

Format: Liquid

Buffer: PBS with 0.02 % sodium azide,0.05 % BSA,50 % glycerol, pH 7.3.

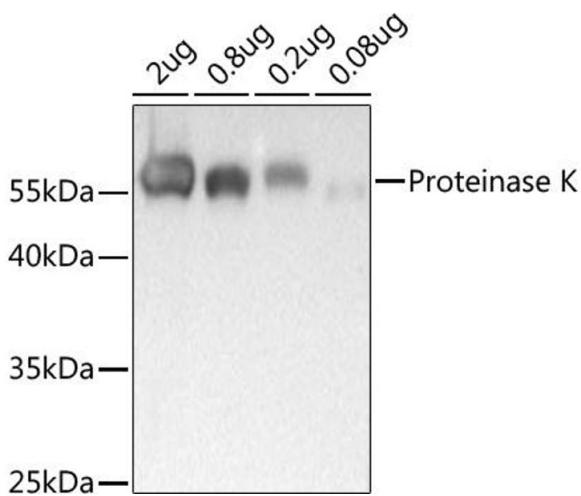
Preservative: Sodium azide

Precaution of Use: This product contains Sodium azide: a POISONOUS AND HAZARDOUS SUBSTANCE which should be handled by trained staff only.

Storage: -20 °C

Storage Comment: Store at -20°C. Avoid freeze / thaw cycles.

Images



Western Blotting

Image 1. Western blot analysis of extracts of Proteinase K, using Proteinase K antibody (ABIN7269720) at 1:1000 dilution. Secondary antibody: HRP Goat Anti-Rabbit IgG (H+L) (ABIN1684268 and ABIN3020597) at 1:10000 dilution. Lysates/proteins: 25 µg per lane. Blocking buffer: 3 % nonfat dry milk in TBST. Detection: ECL Basic Kit (RM00020). Exposure time: .