

Datasheet for ABIN7269724
anti-PLP1 antibody (AA 145-210)



[Go to Product page](#)

5 Images

Overview

Quantity:	100 µL
Target:	PLP1
Binding Specificity:	AA 145-210
Reactivity:	Human
Host:	Rabbit
Clonality:	Polyclonal
Conjugate:	This PLP1 antibody is un-conjugated
Application:	Western Blotting (WB), Immunohistochemistry (IHC), Immunofluorescence (IF)

Product Details

Purpose:	PLP1 Rabbit pAb
Immunogen:	Recombinant fusion protein containing a sequence corresponding to amino acids 145-210 of human PLP1 (NP_955772.1).
Sequence:	TWTTTCQSI AF PSKTSASIGS LCADARMYGV LPWNAFPGKV CGSNLLSICK TAEFQMTFHL FIAAFV
Isotype:	IgG
Cross-Reactivity:	Mouse, Rat
Characteristics:	Polyclonal Antibodies
Purification:	Affinity purification

Target Details

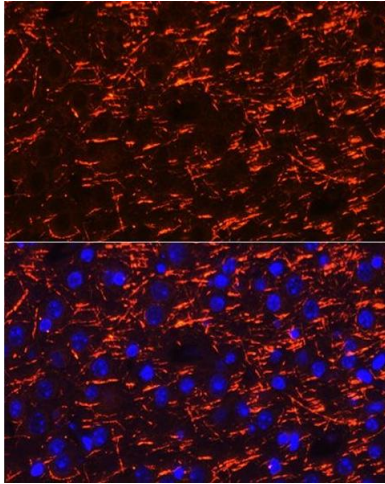
Target:	PLP1
Alternative Name:	PLP1 (PLP1 Products)
Background:	This gene encodes a transmembrane proteolipid protein that is the predominant component of myelin. The encoded protein may play a role in the compaction, stabilization, and maintenance of myelin sheaths, as well as in oligodendrocyte development and axonal survival. Mutations in this gene cause Pelizaeus-Merzbacher disease and spastic paraplegia type 2. Alternatively splicing results in multiple transcript variants, including the DM20 splice variant.,PLP1,GPM6C,HLD1,MMPL,PLP,PLP/DM20,PMD,SPG2,Cell Biology & Developmental Biology,Cell Adhesion,Neuroscience,Cell Type Marker,Oligodendrocyte marker,PLP1
Molecular Weight:	26kDa/30kDa
Gene ID:	5354
UniProt:	P60201

Application Details

Application Notes:	WB,1:500 - 1:2000,IHC,1:50 - 1:200,IF,1:50 - 1:200
Restrictions:	For Research Use only

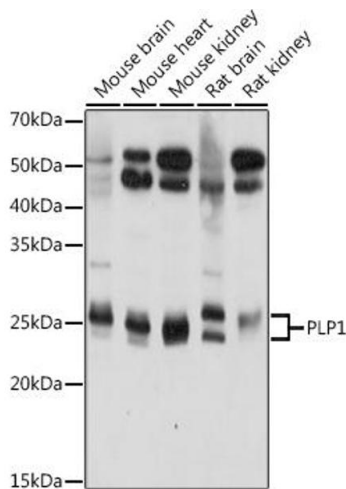
Handling

Format:	Liquid
Buffer:	PBS with 0.02 % sodium azide,50 % glycerol, pH 7.3.
Preservative:	Sodium azide
Precaution of Use:	This product contains Sodium azide: a POISONOUS AND HAZARDOUS SUBSTANCE which should be handled by trained staff only.
Storage:	-20 °C
Storage Comment:	Store at -20°C. Avoid freeze / thaw cycles.



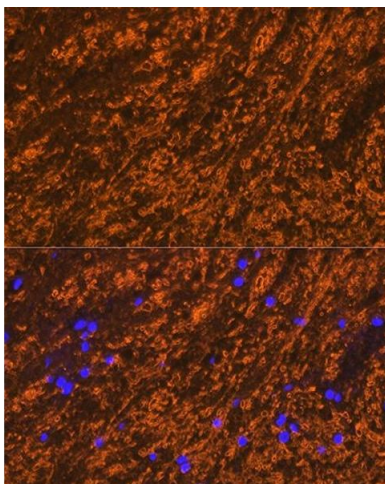
Immunofluorescence

Image 1. Immunofluorescence analysis of mouse brain cells using PLP1 Rabbit pAb (ABIN7269724) at dilution of 1:100 (40x lens). Blue: DAPI for nuclear staining.



Western Blotting

Image 2. Western blot analysis of extracts of various cell lines, using PLP1 antibody (ABIN7269724) at 1:1000 dilution. Secondary antibody: HRP Goat Anti-Rabbit IgG (H+L) (ABIN1684268 and ABIN3020597) at 1:10000 dilution. Lysates/proteins: 25 µg per lane. Blocking buffer: 3 % nonfat dry milk in TBST. Detection: ECL Basic Kit (RM00020). Exposure time: 5s.



Immunofluorescence

Image 3. Immunofluorescence analysis of rat brain cells using PLP1 Rabbit pAb (ABIN7269724) at dilution of 1:100 (40x lens). Blue: DAPI for nuclear staining.

Please check the [product details page](#) for more images. Overall 5 images are available for ABIN7269724.