

Datasheet for ABIN7269746
anti-PPFIBP1 antibody (AA 846-1005)[Go to Product page](#)

1 Image

Overview

Quantity:	100 µL
Target:	PPFIBP1
Binding Specificity:	AA 846-1005
Reactivity:	Human
Host:	Rabbit
Clonality:	Polyclonal
Conjugate:	This PPFIBP1 antibody is un-conjugated
Application:	Western Blotting (WB), Immunofluorescence (IF)

Product Details

Purpose:	PPFIBP1 Rabbit pAb
Immunogen:	Recombinant fusion protein containing a sequence corresponding to amino acids 846-1005 of human PPFIBP1 (NP_003613.3).
Sequence:	LLNIPPNKTL LRRHLATHFN LLIGAEAQHQ KRDAMELPDY VLLTATAKVK PKKLAFSNFG NLRKKKQEDG EEYVCPMELG QASGSASKKG FKPGLDMLRY EEDDLDRLEQ MEDSEGTVRQ IGAFSEGINN LTHMLKEDDM FKDFAARSPS ASITDEDSNV
Isotype:	IgG
Cross-Reactivity:	Human, Mouse, Rat
Characteristics:	Polyclonal Antibodies
Purification:	Affinity purification

Target Details

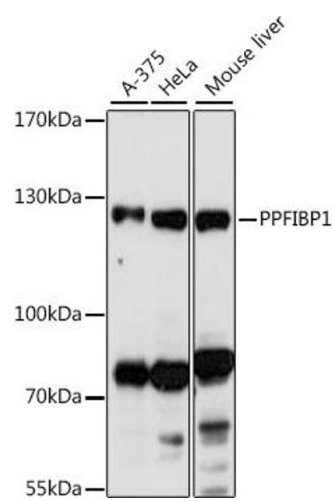
Target:	PPFIBP1
Alternative Name:	PPFIBP1 (PPFIBP1 Products)
Background:	<p>The protein encoded by this gene is a member of the LAR protein-tyrosine phosphatase-interacting protein (liprin) family. Liprins interact with members of LAR family of transmembrane protein tyrosine phosphatases, which are known to be important for axon guidance and mammary gland development. It has been proposed that liprins are multivalent proteins that form complex structures and act as scaffolds for the recruitment and anchoring of LAR family of tyrosine phosphatases. This protein was found to interact with S100A4, a calcium-binding protein related to tumor invasiveness and metastasis. In vitro experiment demonstrated that the interaction inhibited the phosphorylation of this protein by protein kinase C and protein kinase CK2. Alternatively spliced transcript variants encoding distinct isoforms have been reported.,PPFIBP1,L2,SGT2,hSGT2,hSgt2p,Signal Transduction,PPFIBP1</p>
Molecular Weight:	18kDa/96kDa/110kDa/113kDa/114kDa
Gene ID:	8496
UniProt:	Q86W92

Application Details

Application Notes:	WB,1:500 - 1:2000,IF,1:50 - 1:100
Restrictions:	For Research Use only

Handling

Format:	Liquid
Buffer:	PBS with 0.02 % sodium azide,50 % glycerol, pH 7.3.
Preservative:	Sodium azide
Precaution of Use:	This product contains Sodium azide: a POISONOUS AND HAZARDOUS SUBSTANCE which should be handled by trained staff only.
Storage:	-20 °C
Storage Comment:	Store at -20°C. Avoid freeze / thaw cycles.



Western Blotting

Image 1. Western blot analysis of extracts of various cell lines, using PPFIBP1 antibody (ABIN7269746) at 1:1000 dilution. Secondary antibody: HRP Goat Anti-Rabbit IgG (H+L) (ABIN1684268 and ABIN3020597) at 1:10000 dilution. Lysates/proteins: 25 µg per lane. Blocking buffer: 3 % nonfat dry milk in TBST. Detection: ECL Basic Kit (RM00020). Exposure time: 90s.