

Datasheet for ABIN7269751
anti-P2RY12 antibody (C-Term)[Go to Product page](#)

1 Image

Overview

Quantity:	100 µL
Target:	P2RY12
Binding Specificity:	C-Term
Reactivity:	Human
Host:	Rabbit
Clonality:	Polyclonal
Conjugate:	This P2RY12 antibody is un-conjugated
Application:	Western Blotting (WB)

Product Details

Purpose:	P2RY12 Rabbit pAb
Immunogen:	A synthetic peptide corresponding to a sequence within amino acids 200 to the C-terminus of human P2RY12 (NP_795345.1).
Sequence:	INFLIVICY TLITKELYRS YVTRGVGKV PRKKVNVKVF IIIAVFFICF VPFHFARIPY TLSQTRDVFD CTAENTLFYV KESTLWLTSL NACLDPIFYF FLCKSFRNSL ISMLKCPNSA TSLSQDNRRKK EQDGGDPNEE TPM
Isotype:	IgG
Cross-Reactivity:	Human, Mouse, Rat
Characteristics:	Polyclonal Antibodies
Purification:	Affinity purification

Target Details

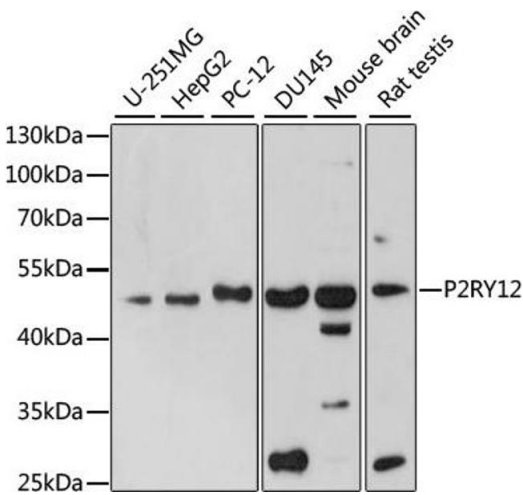
Target:	P2RY12
Alternative Name:	P2RY12 (P2RY12 Products)
Background:	<p>The product of this gene belongs to the family of G-protein coupled receptors. This family has several receptor subtypes with different pharmacological selectivity, which overlaps in some cases, for various adenosine and uridine nucleotides. This receptor is involved in platelet aggregation, and is a potential target for the treatment of thromboembolisms and other clotting disorders. Mutations in this gene are implicated in bleeding disorder, platelet type 8 (BDPLT8). Alternative splicing results in multiple transcript variants of this gene.,P2RY12,ADPG-R,BDPLT8,HORK3,P2T(AC),P2Y(12)R,P2Y(AC),P2Y(ADP),P2Y(cyc),P2Y12,SP1999,Signal Transduction,G protein signaling,G-Protein-Coupled Receptors(GPCR),Neuroscience,P2RY12</p>
Molecular Weight:	39kDa
Gene ID:	64805
UniProt:	Q9H244

Application Details

Application Notes:	WB,1:500 - 1:2000
Restrictions:	For Research Use only

Handling

Format:	Liquid
Buffer:	PBS with 0.02 % sodium azide,50 % glycerol, pH 7.3.
Preservative:	Sodium azide
Precaution of Use:	This product contains Sodium azide: a POISONOUS AND HAZARDOUS SUBSTANCE which should be handled by trained staff only.
Storage:	-20 °C
Storage Comment:	Store at -20°C. Avoid freeze / thaw cycles.



Western Blotting

Image 1. Western blot analysis of extracts of various cell lines, using P2RY12 antibody (ABIN7269751) at 1:1000 dilution. Secondary antibody: HRP Goat Anti-Rabbit IgG (H+L) (ABIN1684268 and ABIN3020597) at 1:10000 dilution. Lysates/proteins: 25 µg per lane. Blocking buffer: 3 % nonfat dry milk in TBST. Detection: ECL Basic Kit (RM00020). Exposure time: 180s.