

Datasheet for ABIN7269761

anti-P2RY6 antibody[Go to Product page](#)**1** Image

Overview

Quantity:	100 µL
Target:	P2RY6
Reactivity:	Human
Host:	Rabbit
Clonality:	Monoclonal
Conjugate:	This P2RY6 antibody is un-conjugated
Application:	Western Blotting (WB)

Product Details

Purpose:	Purinergic Receptor P2Y6 Rabbit mAb
Immunogen:	A synthesized peptide derived from human Purinergic Receptor Purinergic Receptor P2Y6
Isotype:	IgG
Cross-Reactivity:	Human
Characteristics:	Monoclonal Antibodies
Purification:	Affinity purification

Target Details

Target:	P2RY6
Alternative Name:	P2RY6 (P2RY6 Products)
Background:	The product of this gene belongs to the family of P2 receptors, which is activated by

Target Details

extracellular nucleotides and subdivided into P2X ligand-gated ion channels and P2Y G-protein coupled receptors. This family has several receptor subtypes with different pharmacological selectivity, which overlaps in some cases, for various adenosine and uridine nucleotides. This receptor, which is a G-protein coupled receptor, is responsive to UDP, partially responsive to UTP and ADP, and not responsive to ATP. It is proposed that this receptor mediates inflammatory responses. Alternative splicing results in multiple transcript variants that encode different protein isoforms. [provided by RefSeq, Mar 2013],P2Y6,G protein signaling,G protein signaling_G-Protein-Coupled Receptors(GPCR),Signal Transduction,P2RY6

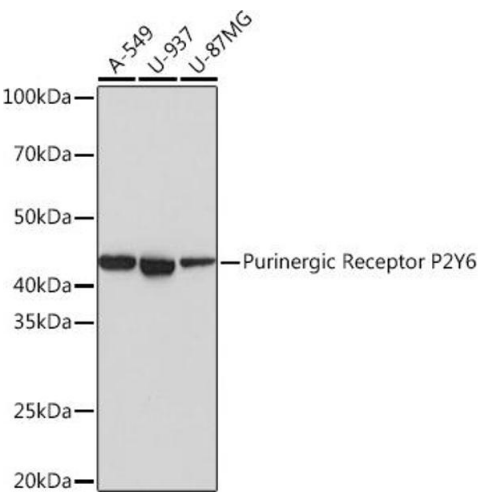
Molecular Weight:	36kDa
Gene ID:	5031
UniProt:	Q15077
Pathways:	Smooth Muscle Cell Migration

Application Details

Application Notes:	WB,1:500 - 1:2000
Restrictions:	For Research Use only

Handling

Format:	Liquid
Buffer:	PBS with 0.02 % sodium azide,0.05 % BSA,50 % glycerol, pH 7.3.
Preservative:	Sodium azide
Precaution of Use:	This product contains Sodium azide: a POISONOUS AND HAZARDOUS SUBSTANCE which should be handled by trained staff only.
Storage:	-20 °C
Storage Comment:	Store at -20°C. Avoid freeze / thaw cycles.



Western Blotting

Image 1. Western blot analysis of extracts of various cell lines, using Purinergic Receptor Purinergic Receptor P2Y6 Rabbit mAb (ABIN7269761) at 1:1000 dilution. Secondary antibody: HRP Goat Anti-Rabbit IgG (H+L) (ABIN1684268 and ABIN3020597) at 1:10000 dilution. Lysates/proteins: 25 µg per lane. Blocking buffer: 3 % nonfat dry milk in TBST. Detection: ECL Basic Kit (RM00020). Exposure time: 1s.